

# Andrew Trunk and Distribution Connectors for CATV cable

## 3-Piece Pin Connector

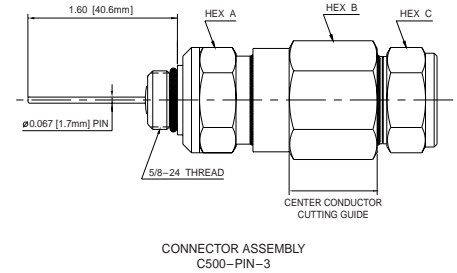
Andrew CATV Cable (Compatible with CommScope PIII and Times Fiber T-10)

| Type No. | Center Conductor | Outer Conductor | Body Hex (A) | Main Nut Hex (B) | Back Nut Hex (C) |
|----------|------------------|-----------------|--------------|------------------|------------------|
| HFC 500  | C500-PIN-3       | .109            | .500         | 1-1/8            | 1                |
| HFC 625  | C625-PIN-3       | .137            | .625         | 1-1/4            | 1-1/8            |
| HFC 750  | C750-PIN-3       | .167            | .750         | 1-3/8            | 1-1/4            |

Andrew HFC (Compatible with CommScope-QR)

|         |            |      |      |        |        |
|---------|------------|------|------|--------|--------|
| HFC 540 | C540-PIN-3 | .124 | .540 | 1-1/8  | 1-1/8  |
| HFC 715 | C715-PIN-3 | .166 | .715 | 1-5/16 | 1-5/16 |
| HFC 860 | C860-PIN-3 | .203 | .860 | 1-1/2  | 1-1/2  |

1-5/8, dia.  
with 1-1/2 flats



## 3-Piece Long Pin Connector

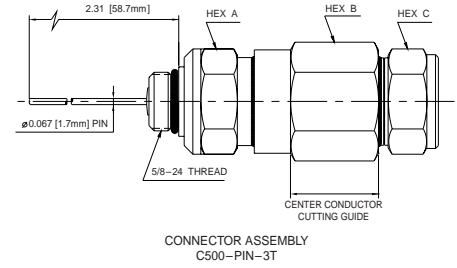
Andrew CATV Cable (Compatible with CommScope PIII and Times Fiber T-10)

| Type No. | Center Conductor | Outer Conductor | Body Hex (A) | Main Nut Hex (B) | Back Nut Hex (C) |
|----------|------------------|-----------------|--------------|------------------|------------------|
| HFC 500  | C500-PIN-3T      | .109            | .500         | 1-1/8            | 1                |
| HFC 625  | C625-PIN-3T      | .137            | .625         | 1-1/4            | 1-1/8            |
| HFC 750  | C750-PIN-3T      | .167            | .750         | 1-3/8            | 1-1/4            |

Andrew CATV Cable (Compatible with CommScope-QR)

|         |             |      |      |        |        |
|---------|-------------|------|------|--------|--------|
| HFC 540 | C540-PIN-3T | .124 | .540 | 1-1/8  | 1-1/8  |
| HFC 715 | C715-PIN-3T | .166 | .715 | 1-5/16 | 1-5/16 |
| HFC 860 | C860-PIN-3T | .203 | .860 | 1-1/2  | 1-1/2  |

1-5/8, dia.  
with 1-1/2 flat



## 3-Piece Splice Connector

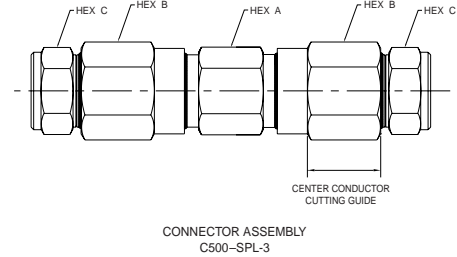
Andrew CATV Cable (Compatible with CommScope PIII and Times Fiber T-10)

| Type No. | Center Conductor | Outer Conductor | Body Hex (A) | Main Nut Hex (B) | Back Nut Hex (C) |
|----------|------------------|-----------------|--------------|------------------|------------------|
| HFC 500  | C500-SPL-3       | .109            | .500         | 1-1/8            | 1                |
| HFC 625  | C625-SPL-3       | .137            | .625         | 1-1/4            | 1-1/8            |
| HFC 750  | C750-SPL-3       | .167            | .750         | 1-3/8            | 1-1/4            |

Andrew CATV Cable (Compatible with CommScope-QR)

|         |            |      |      |        |        |
|---------|------------|------|------|--------|--------|
| HFC 540 | C540-SPL-3 | .124 | .540 | 1-1/8  | 1-1/8  |
| HFC 715 | C715-SPL-3 | .166 | .715 | 1-5/16 | 1-5/16 |
| HFC 860 | C860-SPL-3 | .203 | .860 | 1-1/2  | 1-1/2  |

1-5/8, dia.  
with 1-1/2 flats



## 3-Piece Cable Terminator

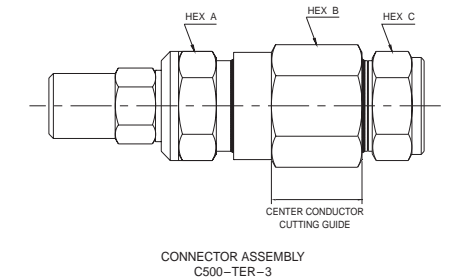
Andrew CATV Cable (Compatible with CommScope PIII and Times Fiber T-10)

| Type No. | Center Conductor | Outer Conductor | Body Hex (A) | Main Nut Hex (B) | Back Nut Hex (C) |
|----------|------------------|-----------------|--------------|------------------|------------------|
| HFC 500  | C500-TER-3       | .109            | .500         | 1-1/8            | 1                |
| HFC 625  | C625-TER-3       | .137            | .625         | 1-1/4            | 1-1/8            |
| HFC 750  | C750-TER-3       | .167            | .750         | 1-3/8            | 1-1/4            |

Andrew CATV Cable (Compatible with CommScope-QR)

|         |            |      |      |        |        |
|---------|------------|------|------|--------|--------|
| HFC 540 | C540-TER-3 | .124 | .540 | 1-1/8  | 1-1/8  |
| HFC 715 | C715-TER-3 | .166 | .715 | 1-5/16 | 1-5/16 |
| HFC 860 | C860-TER-3 | .203 | .860 | 1-1/2  | 1-1/2  |

1-5/8, dia.  
with 1-1/2 flats



## Feed Thru Connectors

Andrew CATV Cable (Compatible with CommScope PIII and Times Fiber T-10)

| Type No. | Center Conductor | Outer Conductor | Body Hex (A) | Main Nut Hex (B) |
|----------|------------------|-----------------|--------------|------------------|
| HFC 500  | C500-THR         | .109            | .500         | 1-1/8            |
| HFC 625  | C625-THR         | .137            | .625         | 1-1/4            |

Andrew CATV Cable (Compatible with CommScope-QR)

|         |          |      |       |       |       |
|---------|----------|------|-------|-------|-------|
| HFC 540 | C540-THR | .124 | .540* | 1-1/4 | 1-1/8 |
|---------|----------|------|-------|-------|-------|

