

TYPES SN54AS182, SN74AS182 LOOK-AHEAD CARRY GENERATOR

D2661. DECEMBER 1983

- High-Speed Replacement for the 'S182
- Offers Carry Functions in a Compatible Form for Direct Connections to the ALU
- Cascadable to Perform Look-Ahead Across n-Bit Adders
- Dependable Texas Instruments Quality and Reliability

PIN DESIGNATIONS

ALTERNATIVE	DESIGNATIONS†	FUNCTION
$\bar{G}0, \bar{G}1, \bar{G}2, \bar{G}3$	G0, G1, G2, G3	Carry Generate Inputs
$\bar{P}0, \bar{P}1, \bar{P}2, \bar{P}3$	P0, P1, P2, P3	Carry Propagate Inputs
C_n	\bar{C}_n	Carry Input
$C_{n+x}, C_{n+y}, C_{n+z}$	$\bar{C}_{n+x}, \bar{C}_{n+y}, \bar{C}_{n+z}$	Carry Outputs
\bar{G}	Y	Carry Generate Output
\bar{P}	X	Carry Propagate Output
VCC		Supply Voltage
GND		Ground

† Interpretations are illustrated in connection with the Function Tables for the 'AS181A and 'AS881A.

description

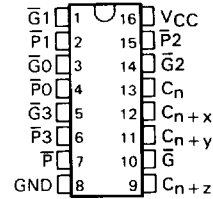
The 'AS182 look-ahead carry generators are capable of anticipating a carry across four binary adders or group of adders. They are cascadable to perform full look-ahead across n-bit adders.

This generator, when used in conjunction with the 'AS181 or 'AS881 Arithmetic Logic Unit ALU, provides high-speed carry look-ahead capability for any word length. The 'AS182 generates the look-ahead (anticipated carry) across a group of four ALUs. In addition, other carry look-ahead circuits may be employed to anticipate carry-across sections of four look-ahead packages up to n-bits. The method of cascading 'AS182 circuits to perform multilevel look-ahead is illustrated under the typical application data.

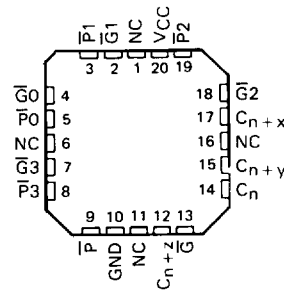
The carry functions (inputs, outputs, generate, and propagate) of the look-ahead generators are implemented in the compatible forms for direct connections to the ALU. Reinterpretations of carry functions as explained on the 'AS181A and 'AS881A data sheet are also applicable to and compatible with the look-ahead generator. Logic equations for the 'AS182 are:

$$\begin{aligned}
 C_{n+x} &= G0 + P0 C_n \\
 C_{n+y} &= G1 + P1 G0 + P1 P0 C_n \\
 C_{n+z} &= G2 + P2 G1 + P2 P1 G0 + P2 P1 P0 C_n \quad \text{or} \\
 \bar{G} &= \bar{G}3 + P3 G2 + P3 P2 G1 + P3 P2 P1 G0 \\
 \bar{P} &= \bar{P}3 P2 P1 P0
 \end{aligned}
 \quad \text{or} \quad
 \begin{aligned}
 \bar{C}_{n+x} &= Y0 (X0 + C_n) \\
 \bar{C}_{n+y} &= Y1 [X1 + Y0 (X0 + C_n)] \\
 \bar{C}_{n+z} &= Y2 \{X2 + Y1 [X1 + Y0 (X0 + C_n)]\} \\
 Y &= Y3 (X3 + Y2) (X3 + X2 + Y1) (X3 + X2 + X1 + Y0) \\
 X &= X3 + X2 + X1 + X0
 \end{aligned}$$

SN54AS182 . . . J PACKAGE
SN74AS182 . . . N PACKAGE
(TOP VIEW)



SN54AS182 . . . FH PACKAGE
SN74AS182 . . . FN PACKAGE
(TOP VIEW)



NC—No internal connection

2
ALS AND AS CIRCUITS

TYPES SN54AS182, SN74AS182 LOOK-AHEAD CARRY GENERATOR

FUNCTION TABLE FOR \bar{G} OUTPUT

INPUTS							OUTPUT
\bar{G}_3	\bar{G}_2	\bar{G}_1	\bar{G}_0	\bar{P}_3	\bar{P}_2	\bar{P}_1	\bar{G}
L	X	X	X	X	X	X	L
X	L	X	X	L	X	X	L
X	X	L	X	L	L	X	L
X	X	X	L	L	L	L	L
All other combinations							H

FUNCTION TABLE FOR \bar{P} OUTPUT

INPUTS				OUTPUT
\bar{P}_3	\bar{P}_2	\bar{P}_1	\bar{P}_0	\bar{P}
L	L	L	L	L
All other combinations				H

FUNCTION TABLE FOR C_{n+x} OUTPUT

INPUTS			OUTPUT
\bar{G}_0	\bar{P}_0	C_n	C_{n+x}
L	X	X	H
X	L	H	H
All other combinations			L

FUNCTION TABLE C_{n+y} OUTPUT

INPUTS					OUTPUT
\bar{G}_1	\bar{G}_0	\bar{P}_1	\bar{P}_0	C_n	C_{n+y}
L	X	X	X	X	H
X	L	L	X	X	H
X	X	L	L	H	H
All other combinations					L

FUNCTION TABLE FOR C_{n+z} OUTPUT

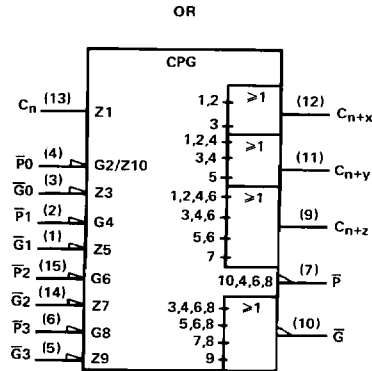
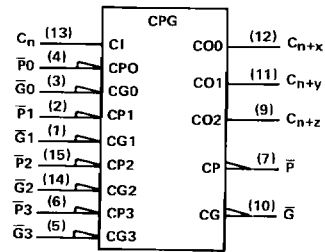
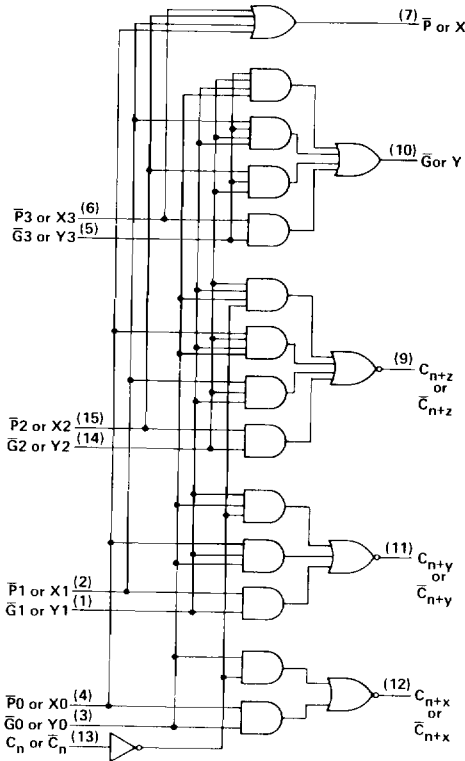
INPUTS							OUTPUT
\bar{G}_2	\bar{G}_1	\bar{G}_0	\bar{P}_2	\bar{P}_1	\bar{P}_0	C_n	C_{n+z}
L	X	X	X	X	X	X	H
X	L	X	L	X	X	X	H
X	X	L	L	L	X	X	H
X	X	X	L	L	L	H	H
All other combinations							L

H = High-level, L = Low-level, = Irrelevant
Any inputs not shown in a given table are irrelevant with respect to that output.

logic diagram (positive logic)

logic symbols

2
ALS AND AS CIRCUITS



Pin numbers shown are for J and N packages only.

**TYPES SN54AS182, SN74AS182
LOOK-AHEAD CARRY GENERATOR**

absolute maximum ratings over operating free-air temperature range (unless otherwise noted)

Supply voltage, V_{CC}	7 V
Input voltage	7 V
Operating free-air temperature range: SN54AS182	-55°C to 125°C
SN74AS182	0°C to 70°C
Storage temperature range	-65°C to 150°C

recommended operating conditions

		SN54AS182			SN74AS182			UNIT
		MIN	NOM	MAX	MIN	NOM	MAX	
V_{CC}	Supply voltage	4.5	5	5.5	4.5	5	5.5	V
V_{IH}	High-level input voltage	2			2			V
V_{IL}	Low-level input voltage				0.8			V
I_{OH}	High-level output current				-2			mA
I_{OL}	Low-level output current				20			mA
T_A	Operating free-air temperature	-55			125			°C

electrical characteristics over recommended operating free-air temperature range (unless otherwise noted)

PARAMETER	TEST CONDITIONS	SN54AS182			SN74AS182			UNIT
		MIN	TYP [†]	MAX	MIN	TYP [†]	MAX	
V_{IK}	$V_{CC} = 4.5$ V, $I_I = -18$ mA	-1.2			-1.2			V
V_{OH}	$V_{CC} = 4.5$ V to 5.5 V, $I_{OH} = -2$ mA	$V_{CC} - 2$			$V_{CC} - 2$			V
V_{OL}	$V_{CC} = 4.5$ V, $I_{OL} = 20$ mA	0.3	0.5		0.3	0.5	V	
I_I	C_n				0.1	0.1	mA	
	$\overline{P}3$				0.2	0.2		
	$\overline{P}2$				0.3	0.3		
	$\overline{P}0, \overline{P}1, \overline{G}3$				0.4	0.4		
	$\overline{G}0, \overline{G}2$				0.7	0.7		
	$\overline{G}1$				0.8	0.8		
I_{IH}	C_n				0.02	0.02	mA	
	$\overline{P}3$				0.04	0.04		
	$\overline{P}2$				0.06	0.06		
	$\overline{P}0, \overline{P}1, \overline{G}3$				0.08	0.08		
	$\overline{G}1, \overline{G}2$				0.14	0.14		
	$\overline{G}1$				0.16	0.16		
I_{IL}	C_n				-0.5	-0.5	mA	
	$\overline{P}3$				-1	-1		
	$\overline{P}2$				-1.5	-1.5		
	$\overline{P}2, \overline{P}1, \overline{G}3$				-2	-2		
	$\overline{G}0, \overline{G}2$				-3.5	-3.5		
	$\overline{G}1$				-4	-4		
I_O^{\ddagger}	$V_{CC} = 5.5$ V, $V_O = 2.25$ V	-30	-112		-30	-112	mA	
I_{CCH}	$V_{CC} = 5.5$ V	17			17			mA
I_{CCL}	$V_{CC} = 5.5$ V	23			23			mA

[†]All typical values are at $V_{CC} = 5$ V, $T_A = 25^\circ\text{C}$.

[‡]The output conditions have been chosen to produce a current that closely approximates one-half of the true short-circuit current, I_{OS} .

2

ALS AND AS CIRCUITS

**TYPES SN54AS182, SN74AS182
LOOK-AHEAD CARRY GENERATOR**

switching characteristics (see Note 1)

PARAMETER	FROM (INPUT)	TO (OUTPUT)	V _{CC} = 4.5 V to 5.5 V, C _L = 50 pF, R _L = 500 Ω, T _A = MIN to MAX						UNIT
			SN54AS182			SN74AS182			
			MIN	TYP [‡]	MAX	MIN	TYP [‡]	MAX	
t _{PLH}	C _n	C _{n+y} , C _{n+y}		5		5		ns	
t _{PHL}		C _{n+z}		5		5			
t _{PLH}	\bar{P} or \bar{G}	C _{n+x} , C _{n+y}		5		5		ns	
t _{PHL}		C _{n+z}		5		5			
t _{PLH}	\bar{P} or \bar{G}	\bar{G}		6		6		ns	
t _{PHL}				5		5			
t _{PLH}	\bar{P}	\bar{P}		5		5		ns	
t _{PHL}				5		5			

[‡]All typical values are at V_{CC} = 5 V, T_A = 25°C.
NOTE 1: For load circuit and voltage waveforms, see page 1-12.

TYPICAL APPLICATION DATA

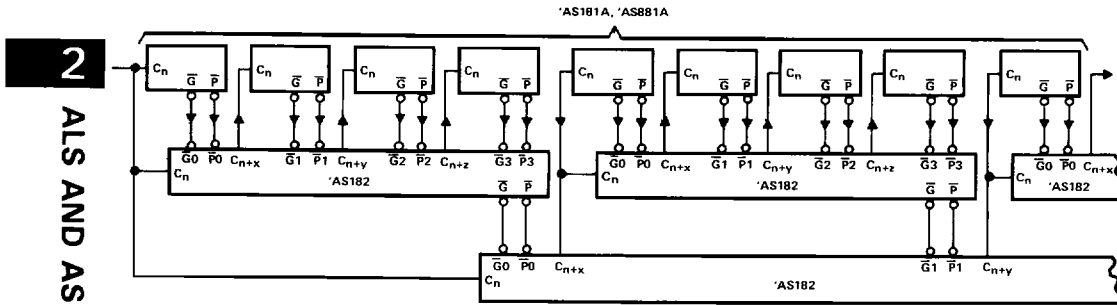


FIGURE 1—THE 'AS182 IN A 64-BIT LOOK-AHEAD CARRY CIRCUIT