

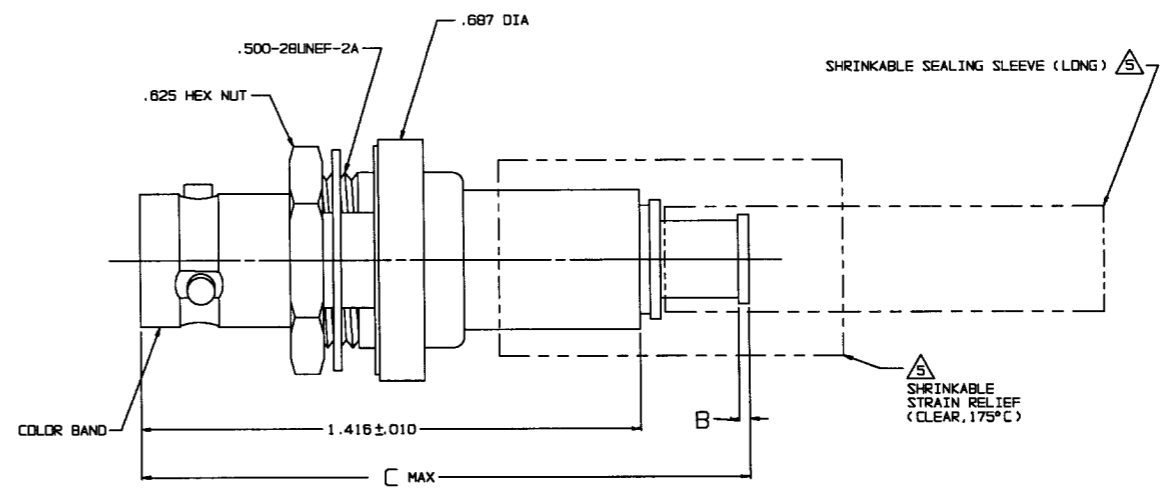
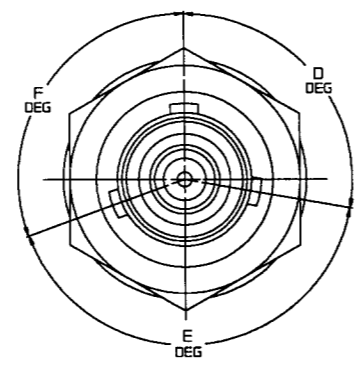
RED INDICATES ORIGINAL

DWG SIZE <input type="checkbox"/>	REVISIONS			3-0205	SH 1
	REV	ECO	DESCRIPTION	DWN	APPROVED
	W	12084	-308 TAI-218 WAS TAI-168; ADDED -308 & -309; SEE ECO	DKC	8/26/82

DASH NO	CABLES ACCOMMODATED	A HEX	B DIM	C MAX	ASSEMBLE PER
-201	M17/178-00002				
-202	TWC-78-1				
-203	TWC-124-1A				
-204	10862, RAYCHEM				
-205	TWAC-78-1F2			1.80	TAI-166
-206	782600130, RAYCHEM				
-207	83310, BELDEN				
-208	202-3927, MICRODOT				
-209	202-3942, MICRODOT				
-210	8451, BELDEN				
-211	202-3934, MICRODOT				
-212	2524E0114, RAYCHEM				
-213	TWC-78-2			1.55	TAI-138
-214	TWC-124-2				
-215	BL982, TIMES				
-216	BL1242, TIMES				
-217	GC875TM24H, GRUMMAN				
-218	EDP221888, RAYCHEM				
-218	252601114, RAYCHEM	.344	.030		
-220	GC875RR1, GRUMMAN			1.80	TAI-166
-221	10614, RAYCHEM				
-222	10613, RAYCHEM				
-223	HMS2-1149, HUGHES				
-224	TWCP-124-3			1.55	TAI-138
-225	PS665PL, PRIME STOCK				
-301	GC875GC1, GRUMMAN				
-302	GC875GB1, GRUMMAN				
-303	7526A5314 RAYCHEM				TAI-168
-304					
-305	M17/177-00001 THERMATICS			1.80	
-306	TRC-50-2				TAI-218
-307	M17/134-00002				TAI-168
-307	TRC-75-1				TAI-218
-308	TRC-75-2				TAI-218
-309	TRC-50-1				TAI-168

POLARIZATION CHART				
KEYING LETTER	D DEGREES	E DEGREES	F DEGREES	COLOR BAND
T	100°	150°	110°	RED
U	120°	130°	110°	ORANGE
V	115°	130°	115°	YELLOW
W	125°	110°	125°	GREEN
X	130°	100°	130°	BLUE
Y	110°	140°	110°	VIOLET
Z	100°	160°	100°	GRAY
S	135°	135°	90°	WHITE
NONE	120°	120°	120°	NONE

INCH	MM
.005	0.13
.010	0.25
.030	0.76
.109	2.77
.218	5.54
.221	5.61
.344	8.74
.505	12.83
.510	12.95
.625	15.88
.687	17.45
1.00	25.40
1.25	31.75
1.416	35.97
1.55	39.37
1.75	44.45
1.80	45.72



-202 SHOWN

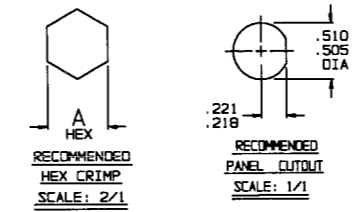
7. FOR TOOL CRIMP CONNECTOR QUALIFIED TO MIL-C-48142, SEE DRAWING 3-0285 (BJ79MC)
6. EXAMPLE OF COMPLETE MODEL NO.

BJ79C	I	-202
BASIC MODEL NO	POLARIZATION LETTER	DASH NO (TABLE 1)

NONE REQD FOR STD POLARIZATION (SEE TABLE 2)

- 1 SHRINKABLE STRAIN RELIEF AND/OR SHRINKABLE SEALING SLEEVE SUPPLIED LOOSE AS FOLLOWS:
- a. CABLE GROUPS -201 THROUGH -210, -217 THROUGH -223, -301, -303, -305, -307 & -308
 - 1 SHRINKABLE STRAIN RELIEF (1.00 LONG)
 - 1 SHRINKABLE SEALING SLEEVE (1.25 LONG)
 - b. CABLE GROUPS -211 THROUGH -216 AND -306 & -309
 - 1 SHRINKABLE STRAIN RELIEF (1.75 LONG)

4. MAX PANEL THK .109
3. 3-LUG CONCENTRIC TWINAX/TRIAX TRB, FULL CRIMP CABLE RECEPTACLE
2. FINISH: TFS-1A (NICKEL)
1. ALL DIMENSIONS ARE IN INCHES



QTY	DESCRIPTION	PART NUMBER	ITEM
TOL UNLESS SPECIFIED +.004 ± .005 -.000 ± .005 ANGLES:	TROMPETER ELECTRONICS, INC.		
DWN DKC 8-1-87	MATERIAL	CODE IDENT	DRAWING NO.
CHK		14949	3-0205
ENGR			REV W
APPR	SCALE 4/1	DATE 11-11-86	SHEET 1 OF 2