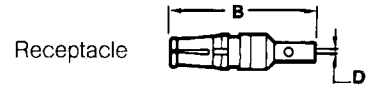
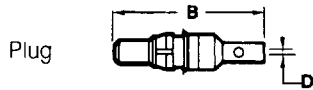
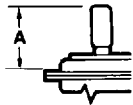
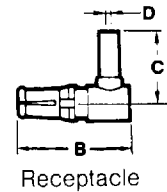
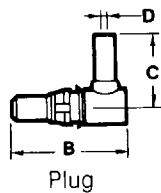
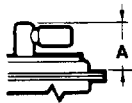


Straight Solder Shielded Contacts



	Part number	A	B	D	R/G cable No.	trim dimensions		
		Max.				E	F	G
Plug short	17DM53740-5000	.669(17,0)	.858(21,8)	.039(1)	178B/U	.314(8)	.248(6,3)	.078(2)
Plug	17DM53740-5001	.740(18,8)	.929(23,6)	.066(1,7)	179B/U316B/U	.314(8)	.248(6,3)	.078(2)
Plug	17DM53740-5002	.846(21,5)	1.035(26,3)	.110(2,8)	180B/U	.374(9,5)	.314(8)	.078(2)
Plug	17DM53740-5005	.846(21,5)	1.035(26,3)	.125(3,2)	58C/U	.374(9,5)	.314(8)	.078(2)
Plug	17DM53740-5008	.740(18,8)	.929(23,6)	.039(1)	178 B/U	.314(8)	.248(6,3)	.078(2)
Recep short	17DM53742-5000	.669(17,0)	.858(21,8)	.039(1)	178B/U	.314(8)	.248(6,3)	.078(2)
Receptacle	17DM53742-5001	.740(18,8)	.929(23,6)	.066(1,7)	179B/U316B/U	.314(8)	.248(6,3)	.078(2)
Receptacle	17DM53742-5002	.846(21,5)	1.035(26,3)	.110(2,8)	180B/U	.374(9,5)	.314(8)	.078(2)
Receptacle	17DM53742-5004	.846(21,5)	1.035(26,3)	.125(3,2)	58C/U	.374(9,5)	.314(8)	.078(2)
Receptacle	17DM53742-5006	.740(18,8)	.929(23,6)	.039(1)	178B/U	.314(8)	.248(6,3)	.078(2)

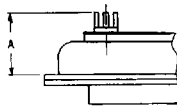
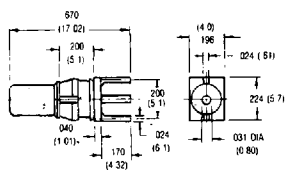
Right Angle Solder Shielded Contacts



	Part number	A	B	C	D	R/G cable No.	trim dimensions		
		Max.					E	F	G
Plug	17DM53741-5000	.531(13,5)	.732(18,6)	.492(12,5)	.039(1)	178B/U	.374(9,5)	.236(6)	.062(1,6)
Plug	17DM53741-5001	.531(13,5)	.732(18,6)	.492(12,5)	.066(1,7)	179B/U316B/U	.374(9,5)	.236(6)	.062(1,6)
Plug	17DM53741-5003	.531(13,5)	.732(18,6)	.602(15,3)	.110(2,8)	180B/U	.421(10,7)	.314(8)	.094(2,4)
Plug	17DM53741-5004	.531(13,5)	.732(18,6)	.602(15,3)	.125(3,2)	58C/U	.421(10,7)	.314(8)	.094(2,4)
Receptacle	17DM53743-5000	.531(13,5)	.732(18,6)	.492(12,5)	.039(1)	178B/U	.374(9,5)	.236(6)	.062(1,6)
Receptacle	17DM53743-5001	.531(13,5)	.732(18,6)	.492(12,5)	.066(1,7)	179B/U316B/U	.374(9,5)	.236(6)	.062(1,6)
Receptacle	17DM53743-5003	.531(13,5)	.732(18,6)	.602(15,3)	.110(2,8)	180B/U	.421(10,7)	.314(8)	.094(2,4)
Receptacle	17DM53743-5004	.531(13,5)	.732(18,6)	.602(15,3)	.125(3,2)	58C/U	.421(10,7)	.314(8)	.094(2,4)

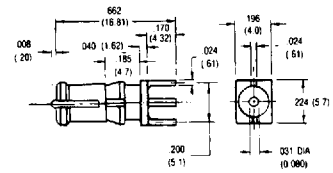
Printed Circuit Mount Shielded Contacts

Straight Plug



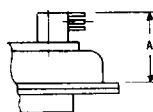
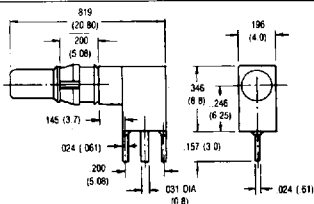
part number	A
17-DM121073-200	.475(12.06)

Straight Receptacle



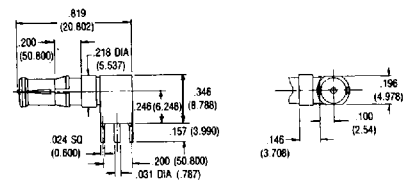
part number	A
17-DM121073-201	.475(12.06)

Right Angle Plug



part number	A
17-DM121073-202	.615(15.62)

Right Angle Receptacle



part number	A
17-DM121073-203	.615(15.62)