

4

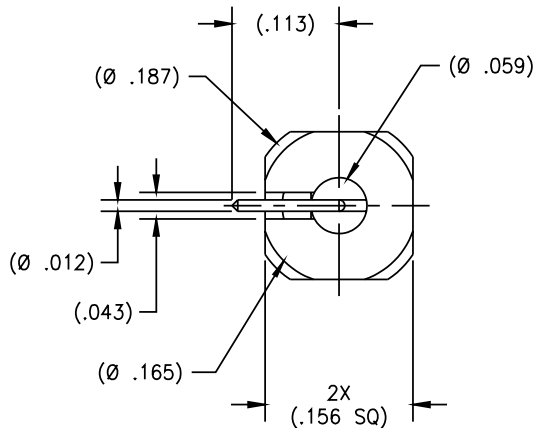
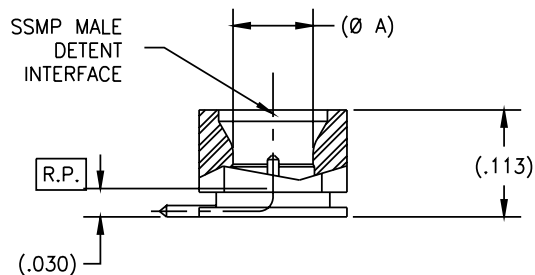
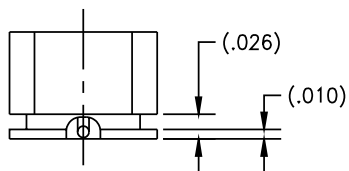
3

2

1

P/N	APPLICABLE NOTE(S)	(Ø A)	INTERFACE
-1CC	1,2	.085	DETENT
-2CC	1,2	.088	NON-DETENT

REVISIONS				DATE	BY
ZONE	REV	DESCRIPTION			
-	-	-		-	-



DRAWING NO.	P312	REV.	-
-------------	------	------	---

NOTE(S):

1. MATERIAL(S):

- 1.1 CONTACT: BRASS ALLOY PER ASTM B-16
- 1.2 INSULATOR: TORLON PER MIL-P-46179.
- 1.3 BODY: BeCu ALLOY PER ASTM B-196
(ALT. MAT'L: BRASS ALLOY PER ASTM B-16)

2. FINISH(ES):

- 2.1 BODY & CONTACT: GOLD PLATED PER ASTM B-488 OVER NICKEL PLATE PER AMS-QQ-N-290
- 2.3 INSULATOR: NONE

APPLICABLE TENSOLITE DOCUMENTS		
WORK STD	PROD INST	ASSY INST
NA	NA	NA

TOLERANCES AND NOTES EXCEPT AS NOTED

DIMENSIONS ARE IN INCHES.
 LINEAR .XXX ±.005 ANGULAR ± 1/2°
 FRACTION ± 1/32

1. MACHINE FINISH: $\sqrt{63}$ RMS
2. BREAK ALL SHARP EDGES .003 MAX.
3. MACHINED FILLETS .005 MAX.
4. MACHINED SURFACES SQUARE TO RESPECTIVE AXIS WITHIN .005 INCHES PER INCH.
5. MACHINED DIAMETERS CONCENTRIC WITHIN .002 T.I.R.
6. DIMENSIONS TO BE MET BEFORE PLATING.
7. CHAMFER ALL THREADS 45°.
8. THREADS PER H-28
9. REMOVE FINISHED EDGES ON TEFLON.
10. REMOVE ALL BURRS.

NOTICE
 THIS DRAWING EMBODIES A CONFIDENTIAL PROPRIETARY DESIGN ORIGINATED BY TENSOLITE COMPANY AND ALL DESIGN, MANUFACTURING, REPRODUCTION, USE AND SALE RIGHTS REGARDING THE SAME ARE EXPRESSLY RESERVED. IT IS SUBMITTED UNDER A CONFIDENTIAL RELATIONSHIP FOR A SPECIFIED PURPOSE AND THE RECIPIENT AGREES BY ACCEPTING THIS DRAWING NOT TO SUPPLY OR DISCLOSE ANY INFORMATION REGARDING IT TO ANY UNAUTHORIZED PERSON TO INCORPORATE IN OTHER PRODUCTS ANY SPECIAL FEATURES PECULIAR TO THIS DESIGN. ALL PATENT RIGHTS HERETO ARE EXPRESSLY RESERVED BY TENSOLITE COMPANY, LONG BEACH, CALIFORNIA 90815.

SEE NOTE(S)	-	SEE NOTE(S)	-
MATERIAL	SIZE	SPECIFICATION	PROCUREMENT
NEXT ASSY	Tensolite HIGH PERFORMANCE CABLES & INTERCONNECT SYSTEMS Long Beach, California 90815		
APPROVAL INITIALS	DATE	TITLE	
DRAWN BY: DKN	03.02.04	SSMP MALE PCB SURFACE MOUNT WITH R/A TERMINATION	
CHECKED: PM	03.02.04	SCALE	SUB-DIRECTORY/FILENAME
QUALITY		10:1	OLP312
ENGINEERING: PM	03.02.04	SIZE	CASE CODE
		C 30990	DRAWING NO. P312
			SHEET 1 of 1
			REV. -

4

3

2

1