



**Model 917**  
**Miniature In-Line Phase Shifters**

**dc to 20.0 GHz**  
**200 Watts**

**Ruggedized 2.92mm Connector**

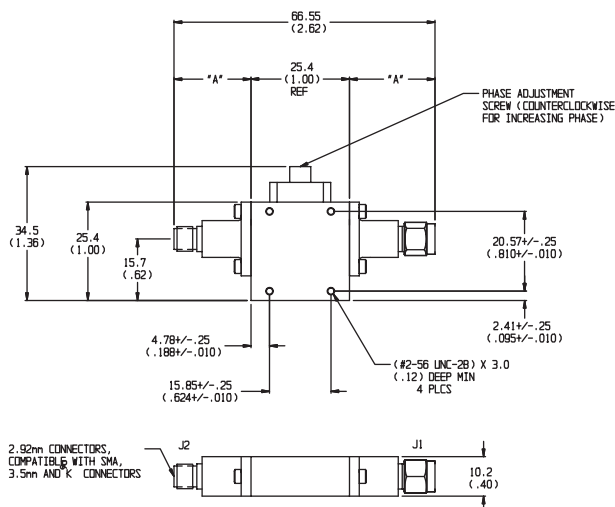


**CONNECTOR:** 2.92mm connector compatible with SMA, 3.5mm and K® connector. Available connector options are:

| Connector Options | Type/Description |
|-------------------|------------------|
| 1                 | 2.92mm, Female   |
| 2                 | 2.92mm, Male     |

**WEIGHT:** 45 g (1.6 oz)

**PHYSICAL DIMENSIONS:**



| CONN TYPE | DIM A        |
|-----------|--------------|
| Female    | 19.81 (0.78) |
| Male      | 21.34 (0.84) |

**NOTE:**

- All dimensions are given in mm (inches) and are nominal  $\pm 0.5$  (0.02), unless otherwise specified.
- K® is a registered trademark of the Anritsu-Wiltron 2.92 mm connector.

**Features**

- /// **Self Locking** - Internal mechanism eliminates the need for a locking nut. Ideal for phase trimming in densely packaged systems with minimum accessibility.
- /// **Linear** - Provides a linear adjustable phase shift to 20 GHz in a very small in-line coaxial package.

**Specifications**

- NOMINAL IMPEDANCE:** 50  $\Omega$
- FREQUENCY RANGE:** dc to 20.0 GHz
- INCREMENTAL PHASE SHIFT:** Adjustable to 225° @ 20 GHz; 100° at 9 GHz.
- RESOLUTION:** 0.5° per turn per GHz, typical (Adjustment shaft has 20 turns for full range).
- INSERTION PHASE:** 890° @ 10 GHz (Typical)
- PHASE VS FREQUENCY:** Nominally linear response
- INSERTION LOSS:** 0.8 dB maximum (0.5 dB typical @ 20 GHz)

| <b>MAXIMUM SWR:</b>   |     |
|-----------------------|-----|
| Frequency Range (GHz) | SWR |
| dc - 20               | 1.5 |

**POWER RATING:** 200 watts average  
**TEMPERATURE RANGE:** -55°C to 125°C.

**MODEL NUMBER DESCRIPTION:**

**Example:**

