

2202-0008

NOTES:

1. MATING:

Interface Dimensions Per Mil-C-39012/SMC Series
And Solitron Microwave MD-124.

2. MATERIALS:

Body, Coupling Nut,
And Ferrule-----Brass Per QQ-B-626, 1/2 Hard, Alloy 360.

Contact And Lock Ring-----Beryllium Copper Per
QQ-C-530, Cond. H.T. Alloy 173.

Crimp Ring-----Copper Per WW-T-799,
Type K, Form A, Class 1.

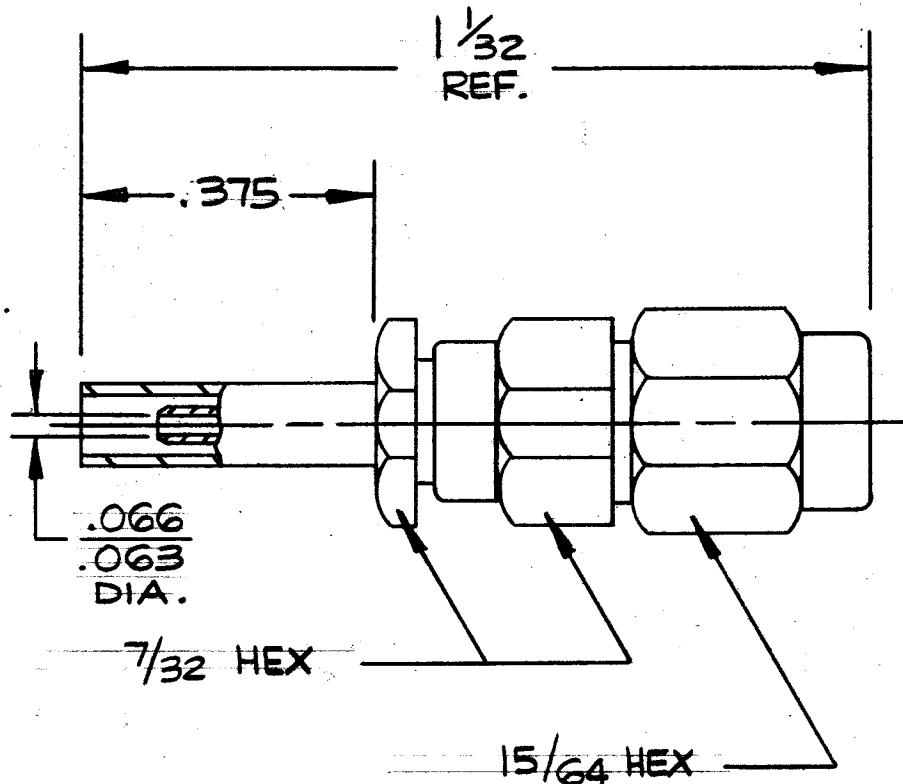
Insulator-----Teflon Per MIL-P-19468,
& L-P-403, Type 1.

3. FINISH:

All Metal Parts Except Lock Ring And Contact-----Gold
Per MIL-G-45204, Type II, Grade C, Class 1 Over Copper
Per MIL-G-14550, Class 4.

Contact-----Gold Per MIL-G-45204, Type II,
Grade C, Class 1 Over Copper.

Lock Ring-----None



SYM	DESCRIPTION	DATE	APPR.	UNLESS OTHERWISE SPECIFIED		SOLITRON/MICROWAVE		REF. ENGINEERING	
				1 ALL DIMENSIONS ARE AFTER PLATING		PORT SALERNO, FLORIDA		DATA DRAWING	
-	REL.F-9474	11-83	D	2 BREAK ALL CORNERS & EDGES .005 R MAX.		MATERIAL		TITLE	
				3 CHAMFER 1ST & LAST THREADS 45°		FINISH		SMC PLUG TO	
				4 SURFACE ROUGHNESS 63 MIL-STD-10		AREA		RG 188, 316/U	
				5 DIAMETERS ON COMMON CENTERS TO BE CONCENTRIC WITHIN T.I.R.		SCALE		DRAWING NO.	
				6 REMOVE ALL BURRS		4x		2202-0008	
				DIMENSIONS ARE IN INCHES TOLERANCES		CODE IDENT NO.		SHT. 1 OF 2	
				DECIMALS	FRACTIONAL	ANGULAR	SIZE		
				X ± .030		X' ± 1°0'	A		
				XX ± .015	± 1/64				
				XXX ± .005		X'X' ± 15'			
				DRAWN	DATE	11-83			
				CHECKED	DATE	11-83			
				APPROVED	DATE	11-3-83			

S/M DESIGN STANDARDS

DRAWING NO.

2202-0008

REQUIREMENTS

RATINGS

Nominal Impedance (ohms)

50

Frequency Range (ghz)

DC-10.0

Voltage Rating (max. vrms)

250

Temperature Rating (degrees centigrade)

-65 TO +165

VSWR (max.)

1.20 +.025 xFGHZ

Insertion Loss (dB max.)

.09 x \sqrt{FGHZ}

RF Leakage (min. dB down)

100 dB-FGHZ

RF High Potential (max. vrms)

500 at 5MHZ

Dielectric Withstanding Voltage (max. vrms)

750

Insulation Resistance (min. megohms)

1000

Contact Resistance:

Center Contact (max. milliohms)

6.0

Outer Contact (max. milliohms)

1.0

Center Contact Axial Forces:

Insertion (max. ounces)

40.0

Withdrawal (min. ounces)

1.0

Connector Durability (min. cycles)

500

Connector Engagement & Disengagement
(max. inch lbs.)

1.0

REQUIREMENTS

RATINGS

Vibration

MIL-STD-202

Method 204

Cond. D (20G's)

Shock

MIL-STD-202

Method 213

Cond. I (100G's)

Temperature
Cycling

MIL-STD-202

Method 102 - Cond. C

(-65°C to +200 ° C)

Corrosion

MIL-STD-202

Method 101

Cond. B (48 Hrs.)

Moisture
Resistance

MIL-STD-202

Method 106

Less Step 7b

Barometric Pressure
(Altitude)

MIL-STD-202

Method 105 - Cond. C

(70,000 ft) (190 vrms)

REMARKS: 1) Recommended Mating Torque: 35-50 INCH OUNCES

TITLE: SMC PLUG TO RG 188,316/U,
CRIMP ATTACHMENTSOLITRON/MICROWAVE
PORT SALERNO, FLORIDA

SHT. 2 of 2

DRAWING NO.
2202-0008REV.
-