



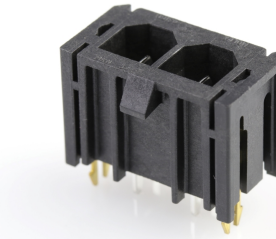
Part Number : [431602102](#)

Product Description : Sabre Vertical Header, 2 Circuits, Glow-Wire Capable, PCB Thickness 1.60mm, with Board Lock

Series Number : 43160

Status : Active

Product Category : PCB Headers and Receptacles



Documents & Resources

Drawings

[Drawing 431602102_sd.pdf](#)

[Packaging Design Drawing PK-43789-001-001.pdf](#)

3D Models and Design Files

[3D Model 431602102_stp.zip](#)


[Symbol Footprint Data SYM-43160-2102-001.zip](#)

Specifications

[Product Specification PS-44441-9999-001.pdf](#)

Product Environment Compliance

Compliance

GADSL/IMDS	Compliant with Exemption 44; 33
China RoHS	
EU ELV	Not Relevant
Low-Halogen Status	Not Low-Halogen per IEC 61249-2-21
REACH SVHC	Not Contained per D(2023)3788-DC (14 Jun 2023)
EU RoHS	Compliant per EU 2015/863

[Multiple Part Product Compliance Statements](#)

- Eu RoHS
- REACH SVHC
- Low-Halogen

[Multiple Part Industry Compliance Documents](#)

- IPC 1752A Class C
- IPC 1752A Class D
- Molex Product Compliance Declaration
- IEC-62474
- chemSHERPA (xml)

EU RoHS Certificate of Compliance

Part Details

General

Status	Active
Category	PCB Headers and Receptacles
Series	43160
Description	Sabre Vertical Header, 2 Circuits, Glow-Wire Capable, PCB Thickness 1.60mm, with Board Lock
Application	Power, Wire-to-Board
Comments	Fully Polarized, high power wire-to-board and wire-to-wire connector system; This Molex product is manufactured from material that has the following ratings, tested by independent agencies: a) A Glow Wire Ignition Temperature (GWIT) of at least 775 deg C per IEC 60695-2-13. b) A Glow Wire Flammability Index (GWFI) above 850 deg C per IEC 60695-2-12 and hence complies with the requirements set out in the International Standard IEC 60335-1 5th edition - household and similar electrical appliances - safety, section 30 Resistance to heat and fire. The customers using this product must determine its suitability for use in their particular application through testing or other acceptable means as described in end-product glow-wire flammability test standard IEC 60695-2-11 and any applicable product end-use standard(s). If it is determined during the customer's evaluation of suitability, that higher performance is required, please contact Molex for possible product options.
Component Type	PCB Header
Product Family	Sabre Power Connector
Product Name	Sabre

UPC	800754378000
-----	--------------

Agency

CSA	LR19980
UL	E29179

Electrical

Current - Maximum per Contact	18.0A
Voltage - Maximum	600V

Physical

Breakaway	No
Circuits (Loaded)	2
Circuits (maximum)	2
Color - Resin	Black
Durability (mating cycles max)	25
First Mate / Last Break	No
Flammability	94V-0
Glow-Wire Capable	Yes
Guide to Mating Part	No
Keying to Mating Part	Yes
Lock to Mating Part	Yes
Material - Metal	Brass
Material - Plating Mating	Tin
Material - Plating Termination	Tin
Material - Resin	High Temperature Thermoplastic
Net Weight	3.027/g
Number of Rows	1
Orientation	Vertical
Packaging Type	Tray
PC Tail Length	3.81mm
PCB Locator	Yes
PCB Retention	Yes
PCB Thickness - Recommended	1.60mm
Pitch - Mating Interface	7.50mm

Pitch - Termination Interface	7.50mm
Plating min - Mating	0.889µm
Plating min - Termination	0.889µm
Polarized to Mating Part	Yes
Polarized to PCB	Yes
Shrouded	Fully
Stackable	No
Temperature Range - Operating	-40° to +75°C
Termination Interface Style	Through Hole

Solder Process Data

Max-Duration	5
Lead-Free Process Capability	WAVE
Max-Cycle	1
Max-Temp	235

Mates With / Use With

Mates with Part(s)

Description	Part Number
7.50mm Pitch Sabre Receptacle Crimp Housing, UL 94V-0, 2 Circuits, Black	<u>0444412002</u>

This document was generated on Sep 19, 2023