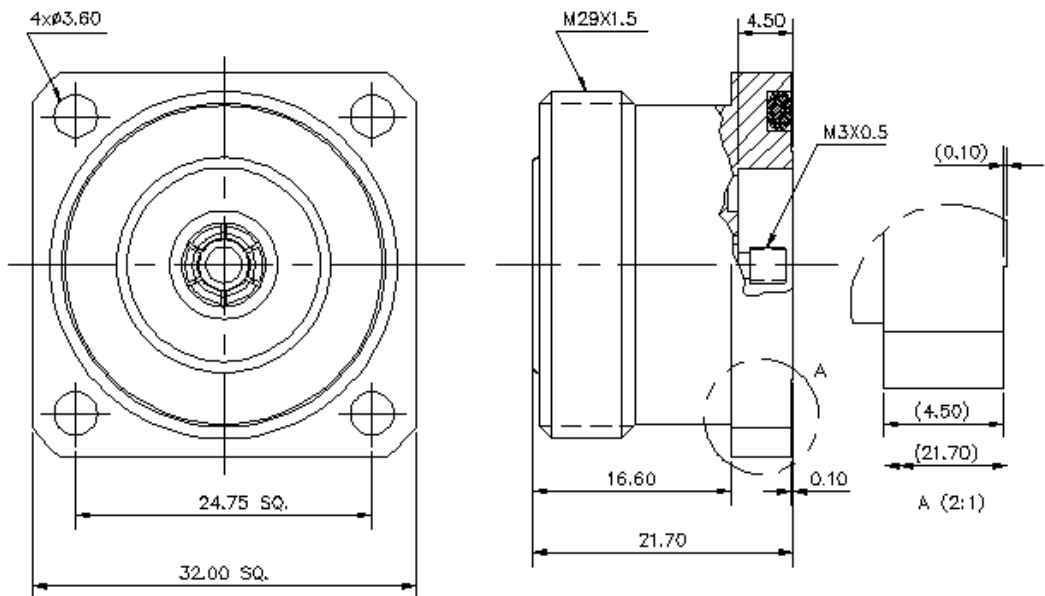


Connector

PRODUCT SPECIFICATION

DFPM-M3

7/16 DIN Female Panel Mount Receptacle



CHARACTERISTICS

Components

| | |
|---------------|---------------------------------|
| Body | Brass Trimetal Plate |
| Inner Contact | Phosphor Bronze Silver Plate |
| Insulator | PTFE |
| O-Ring | Silicone Rubber |

Electrical

| | |
|---|-------------------------------------|
| Recommended Maximum Operating Frequency, GHz | 7.5 |
| 3rd Order IM, Product Typical @ 910 MHz, -dBm | 120 |
| 3rd Order IM Test Method | Two +43 dBm Carriers |
| Nominal Impedance, Ohms | 50 |
| Insertion Loss, max, dB | 0.05 $\sqrt{\text{frequency(GHz)}}$ |
| Connector Return Loss, dB | 40 |
| 0 - 2.2 GHz | |

Customer Support Center:

From North America: 1-800-255-1479
International: +1-708-873-2307

www.andrew.com

This Specification Sheet is for reference only and is subject to change without notice.

Copyright © 2002 by Andrew Corporation, Printed in U.S.A.
March 06, 2002



Connector

PRODUCT SPECIFICATION

DFPM-M3

7/16 DIN Female Panel Mount Receptacle

Mechanical

| | |
|---|-----------|
| Inner Attachment Method | M3 Thread |
| Interface Durability (Number of cycles) | 500 |

Environmental

| | |
|----------------------------------|---|
| Moisture Resistance Test | MIL-STD-202, Method 106 |
| Mechanical Shock Test | MIL-STD-202F, Method 213B, Test Cond. C |
| Operating Temperature Range, °C | -55 to 150 |
| Immersion Test, mated connectors | IEC 529:1989,IP68 |

Customer Support Center:

From North America: 1-800-255-1479
 International: +1-708-873-2307

www.andrew.com

This Specification Sheet is for reference only and is subject to change without notice.

Copyright © 2002 by Andrew Corporation, Printed in U.S.A.
 March 06, 2002