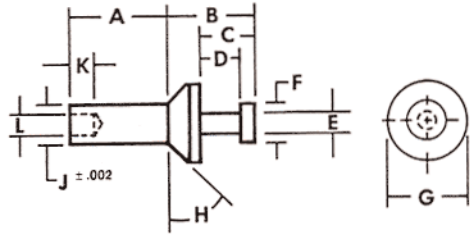




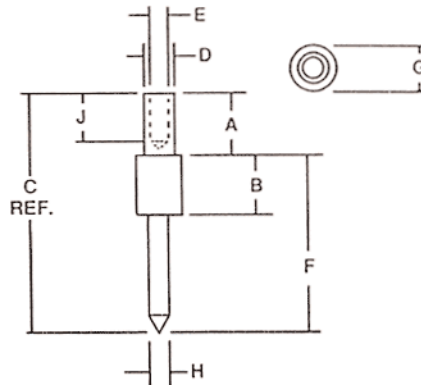
EMC® Product "NIT" Series



Type 132M

Type	EMC Part #	MIL-T-55155 Number	A	B	C	D	E	F	G	H	J	K	L	Mtg. Hole	Board Thick.
132M	5535-P02	SE25XC01	.062 (1.57)	.136 (3.45)	.084 (2.13)	.064 (1.63)	.031 (.79)	.060 (1.52)	.125 (3.18)	45°	.060 (1.52)	.040 (1.02)	.042 (1.07)	.067 (1.70)	.031 (.79)
132M	5536-P02	SE25XC02	.094 (2.39)	.136 (3.45)	.084 (2.13)	.064 (1.63)	.031 (.79)	.060 (1.52)	.125 (3.18)	45°	.060 (1.52)	.040 (1.02)	Max. Runout	.067 (1.70)	.062 (1.57)
132M	5537-P02	SE25XC03	.125 (3.18)	.136 (3.45)	.084 (2.13)	.064 (1.63)	.031 (.79)	.060 (1.52)	.125 (3.18)	45°	.060 (1.52)	.040 (1.02)	.003 (.08)	.067 (1.70)	.093 (2.36)
132M	5538-P02	SE25XC04	.156 (3.96)	.136 (3.45)	.084 (2.13)	.064 (1.63)	.031 (.79)	.060 (1.52)	.125 (3.18)	45°	.060 (1.52)	.040 (1.02)	Tir	.067 (1.70)	.125 (3.18)

inch
(mm)



Type 106

Type	EMC Part #	A	B	C	D	E	F	G	H	J	Board Thick.
106	5373-P02	.125 (3.18)	.120 (3.05)	.479 (12.17)	.060 (1.52)	.040 (1.02)	.354 (8.99)	.093 (2.36)	.030 (2.03)	.093 (2.36)	.033 (.84)
106	6159-P02	.051 (1.30)	.027 (.69)	.226 (5.74)	.040 (1.02)	.025 (.64)	.175 (4.45)	.062 (1.57)	.025 (.64)	.035 (.89)	.029 (.74)
106	6212-P02	.082 (2.08)	.027 (.69)	.195 (4.95)	.040 (1.02)	.025 (.64)	.113 (2.87)	.062 (1.57)	.025 (.64)	.035 (.89)	.029 (.74)
106	6213-P02	.051 (1.30)	.207 (5.26)	.251 (6.38)	.040 (1.02)	.025 (.64)	.200 (5.08)	.062 (1.57)	.025 (.64)	.035 (.89)	.029 (.74)
106	6214-P02	.051 (1.30)	.027 (.69)	.551 (14.00)	.040 (1.02)	.025 (.64)	.500 (12.70)	.062 (1.57)	.025 (.64)	.035 (.89)	.029 (.74)
106	6215-P02	.042 (1.07)	.027 (.69)	.157 (3.99)	.040 (1.02)	.025 (.64)	.115 (2.92)	.062 (1.57)	.025 (.64)	.035 (.89)	.029 (.74)

inch
(mm)

Plating:

P02: 400µ" Tin over copper

P08: 30µ" Gold over silver