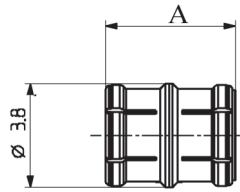
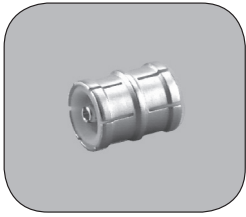


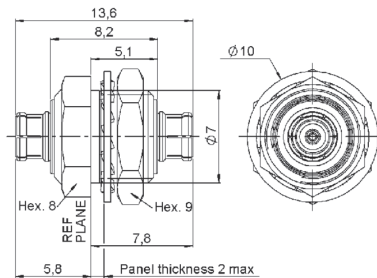
IN SERIES ADAPTERS (male-male center contact)



Part number	Length A (mm)	interface:	Nominal board to board
R223 703 000	4.8	snap-slide	6.7
R223 703 080	7.1	slide-slide	9

Other length can be designed upon request: minimum board to board height is 6.7 mm.

IN SERIES BULKHEAD ADAPTERS (male-male center contact)



Part number	Series	Panel drilling
R223 720 020	MMBX male/MMBX male	P02

BETWEEN-SERIES ADAPTERS

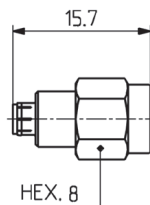


Fig. 1

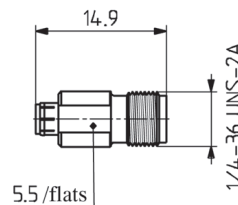


Fig. 2

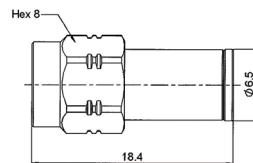


Fig. 3

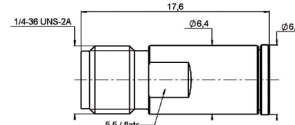


Fig. 4

Part number	Fig.	Series	Packaging
R191 389 100	1	MMBX male/SMA male	unit
R191 389 200	2	MMBX male/SMA female	
R191 389 300	3	MMBX female/SMA male	
R191 389 400	4	MMBX female/SMA female	

To download data sheets and assembly instructions, visit www.radiall.com & enter the part number in the Search box. **Bold** part numbers represent products typically in stock & available for immediate shipment. See page 8 and 9 for packaging information.