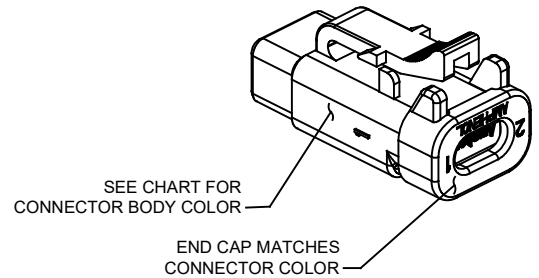
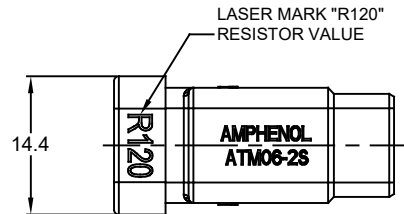
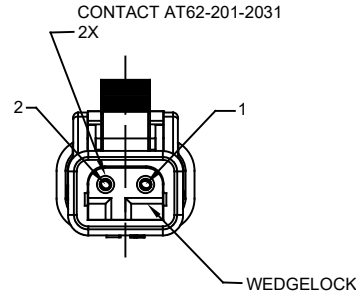
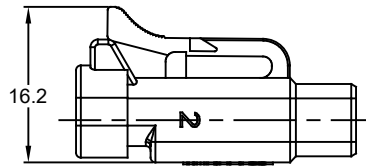
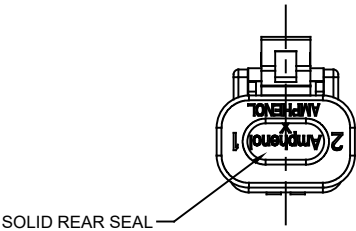
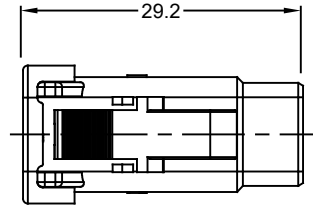


WIRING DIAGRAM



NOTES: UNLESS OTHERWISE SPECIFIED

- MATERIAL:  
HOUSING, END CAP, WEDGE: THERMOPLASTIC  
SEALS: SILICONE RUBBER
- MODIFICATIONS: END CAP, SOLID SEAL, GOLD CONTACTS,  
RESISTOR, WEDGE AWM-2S, LASER MARKING, COLOR .
- SPECIFICATIONS:  
3.1 CURRENT RATING: 7.5 AMPS  
3.2 OPERATING TEMPERATURE: -55°C TO +125°C  
3.3 CONTACT SIZE: 20  
3.4 MOISTURE RESISTANCE: IP67 (MATED CONDITION)  
3.5 MATING CYCLE DURABILITY: 100 CYCLES  
3.6 RoHS COMPLIANT
- MATING PART: ATM04-2P\* RECEPTACLE  
(\* = MODIFICATIONS AND COLORS)
- ALL DIMENSIONS ARE FOR REFERENCE USE ONLY.

PART NUMBER CHART	
COLOR	PART NUMBER
GREY	ATM06-2S-R120GRY
BLACK	ATM06-2S-R120BLK
BLUE	ATM06-2S-R120BLU
BROWN	ATM06-2S-R120BRN
GREEN	ATM06-2S-R120GRN
RED	ATM06-2S-R120RED
WHITE	ATM06-2S-R120WHT
YELLOW	ATM06-2S-R120YEL

REVISIONS					
REV	ECO	DESCRIPTION	DATE	BY	APPR
A1	-	RELEASE	23MAY2017	JAH	
A2	-	CHANGED TO CHARTED DRAWING	16APR2018	JAH	

SEE CHART		PART NUMBER		DESCRIPTION		ITEM
QUANTITY	MATERIALS LIST					
UNLESS OTHERWISE SPECIFIED:		SIGNATURES		DATE		
1) All dimensions are in metric (mm).		JAH		23MAY2017		
2) Tolerances are as follows:		CHECKED:				
1 PL DEC ±0.30		ENGINEER:				
2 PL DEC ±0.15		APPROVAL:				
3 PL DEC ±0.08		CUSTOMER:				
3) Note reference =		THIS DRAWING IS SUPPLIED FOR INFORMATION ONLY. DESIGN FEATURES, SPECIFICATIONS AND PERFORMANCE DATA SHOWN HEREON ARE THE PROPERTY OF THE AMPHENOL CORPORATION. NO RIGHTS OF REPRODUCTION ARE IMPLIED. ALL DIMENSIONS ARE SUBJECT TO NORMAL MANUFACTURING VARIATIONS.				
MATERIAL SPECIFICATIONS:		DRAWN:		SIZE		
PROCESS SPECIFICATIONS:		APPROVED:		TYPE		
NEXT ASSY:		CUSTOMER:		DWG NO.		
				B C-		
				ATM06-2S-R120XXX		
				SCALE NONE		
				SHEET 1 OF 1		

TITLE: PLUG, 2-WAY ATM, 120 OHM, 1/2W  
DWG NO.: ATM06-2S-R120XXX  
REV: A2  
SH: 1  
OF: 1