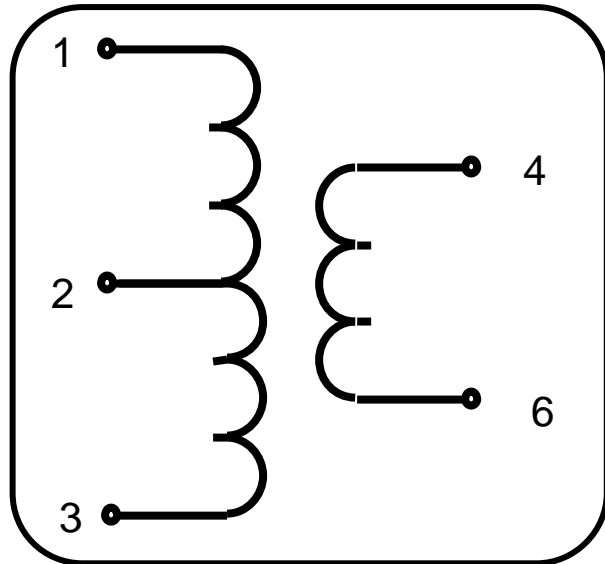


2012 Size

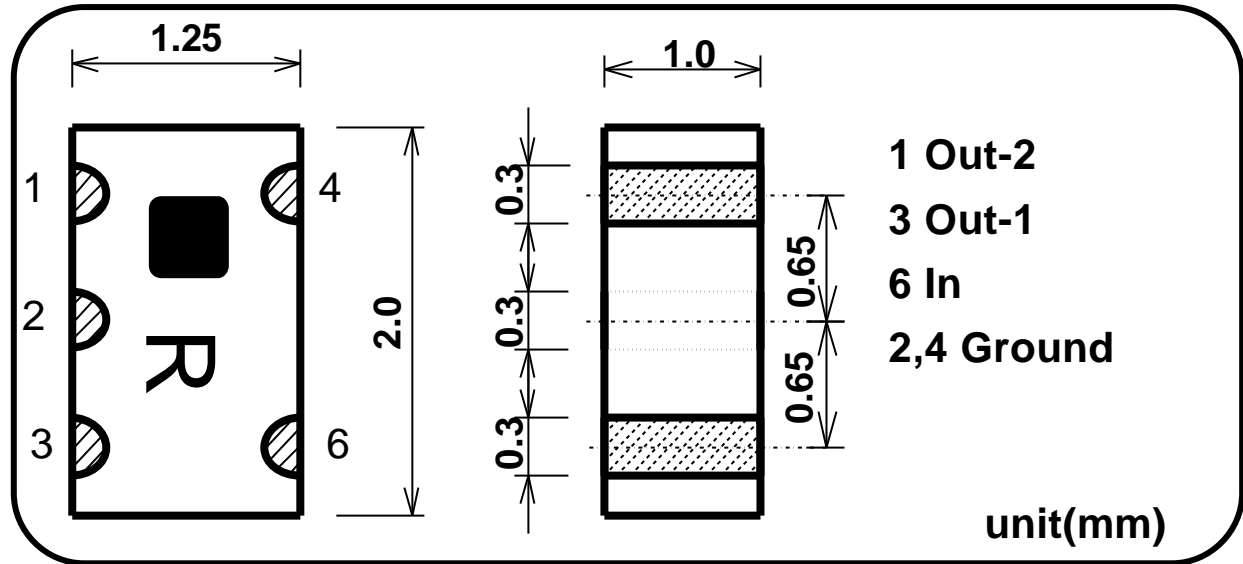
1.7/1.9 GHz Band
Chip Multilayer RF Transformer

SLT-S180R4

Equivalent Circuits



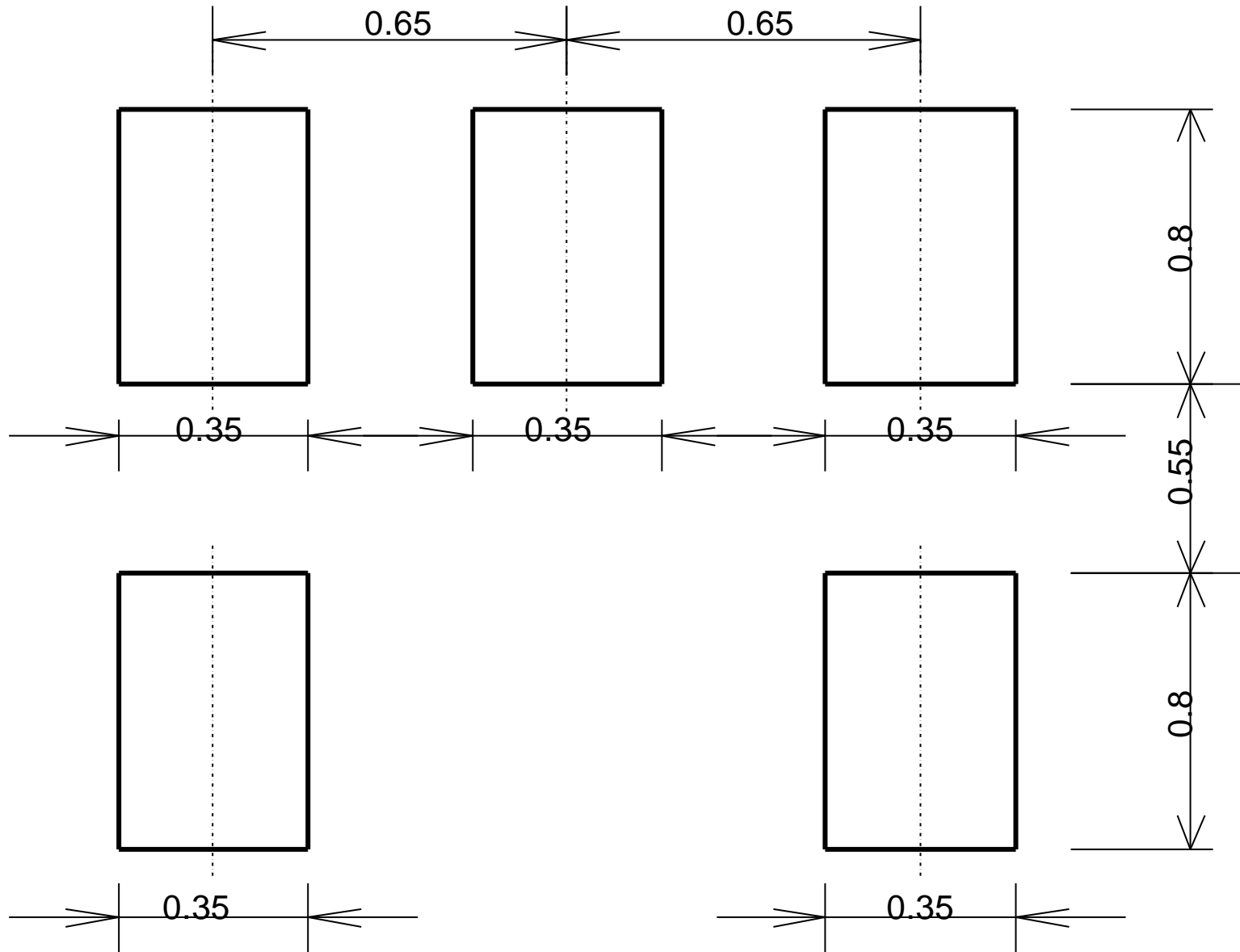
Shape & Size



Specifications

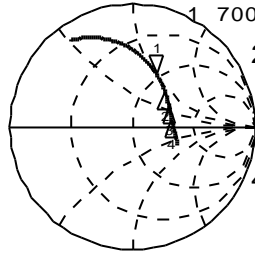
P/N	Impedance	Frequency Range(MHz)	Insertion Loss	Phase Balance	Handling Power	Temperature Range
SLT-S180R4	50:200	1700-1900	4.0dB Max. (1.5dB Typ.)	180+/- 20deg.	100mW Max.	-35 ~ +85 deg.C

FOOT PATTERN

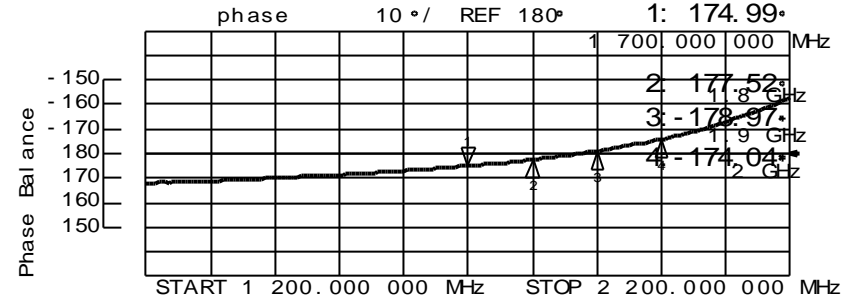
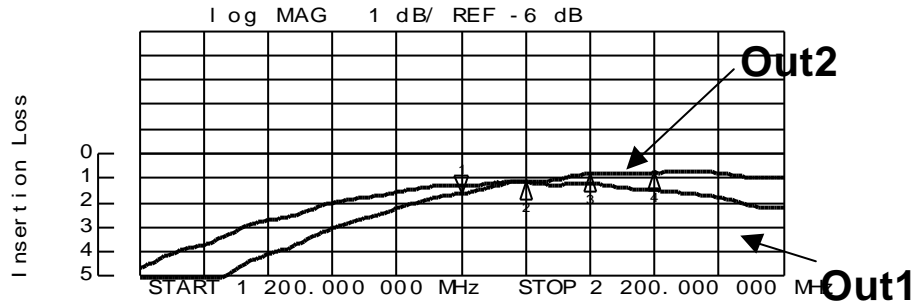
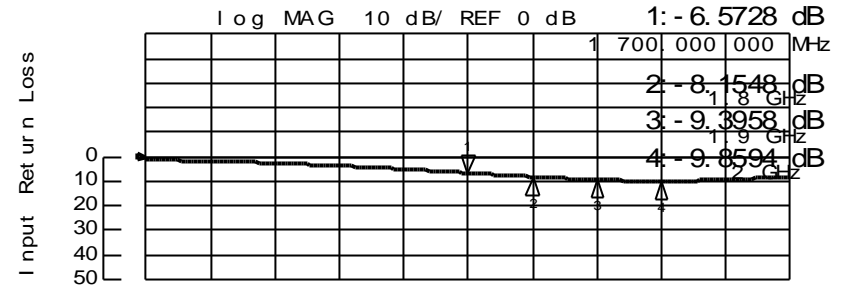


SLT-S180R4 Sample Data

1 U FS 1: 46.881 ρ 51.355 ρ 4.8079 nH
1 700.000 000 MHz



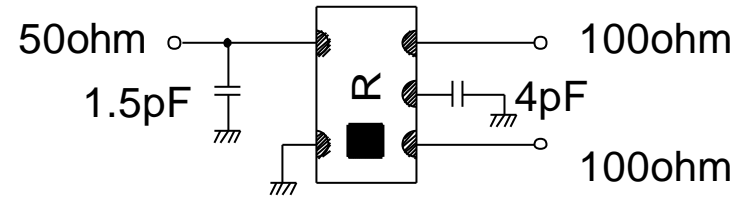
2: 66.504 ρ
46.145 ρ
1.8 GHz
3: 83.574 ρ
32.297 ρ
1.9 GHz
4: 94.746 ρ
13.422 ρ
2 GHz



	Out1	Out2
1.7GHz	1.31dB	1.63dB
1.8GHz	1.18dB	1.13dB
1.9GHz	1.23dB	0.83dB

*Except Splitting & Resistor Loss

1.7/1.9GHz Band
Chip Multilayer RF Transformer SLT-S180R4



If you apply DC voltage between primary and secondary winding, use DC cut capacitor as below circuit A.

- C i r c u i t A -

