

DM74AS1805 Hex 2-Input NOR Driver

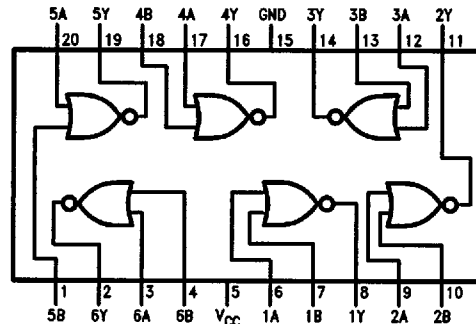
General Description

These devices contain six independent 2-Input drivers each of which performs the logic NOR function. The 'AS1805 is equivalent to the 'AS805B but the supply voltage and ground pins are centered in the package. This positioning of the supply voltage and ground pins reduce the lead inductance of these pins. This reduction of lead inductance will minimize noise generated onto either the supply voltage or ground bus which is significant in high current switching applications.

Features

- Switching specifications at 50 pF
- Switching specifications guaranteed over full temperature and V_{CC} range
- Advanced oxide-isolated, ion-implanted Schottky TTL process
- Centered V_{CC} and GND configuration provides minimum lead inductance for high current switching applications
- High capacitive drive capability

Connection Diagram



TL/F/8618-1

Order Number DM74AS1805WM or DM74AS1805N
See NS Package Number M20B or N20A

Function Table

$$Y = \overline{A + B}$$

INPUTS		OUTPUT
A	B	Y
L	L	H
L	H	L
H	L	L
H	H	L

Absolute Maximum Ratings

Supply Voltage	7V
Input Voltage	7V
Operating Free Air Temperature	0°C to 70°C
Storage Temperature Range	-65°C to +150°C
Typical θ_{JA}	
N Package	58.3°C/W
M Package	154.0°C/W

Note: This product meets application requirements of 500 temperature cycles from -65°C to +150°C.

Note: The "Absolute Maximum Ratings" are those values beyond which the safety of the device cannot be guaranteed. The device should not be operated at these limits. The parametric values defined in the "Electrical Characteristics" table are not guaranteed at the absolute maximum ratings. The "Recommended Operating Conditions" table will define the conditions for actual device operation.

Recommended Operating Conditions

Symbol	Parameter	Min	Nom	Max	Units
V _{CC}	Supply Voltage	4.5	5	5.5	V
V _{IH}	High Level Input Voltage	2			V
V _{IL}	Low Level Input Voltage			0.8	V
I _{OH}	High Level Output Current			-48	mA
I _{OL}	Low Level Output Current			48	mA
T _A	Operating Free Air Temperature Range	0		70	°C

Electrical Characteristics over recommended operating free air temperature range

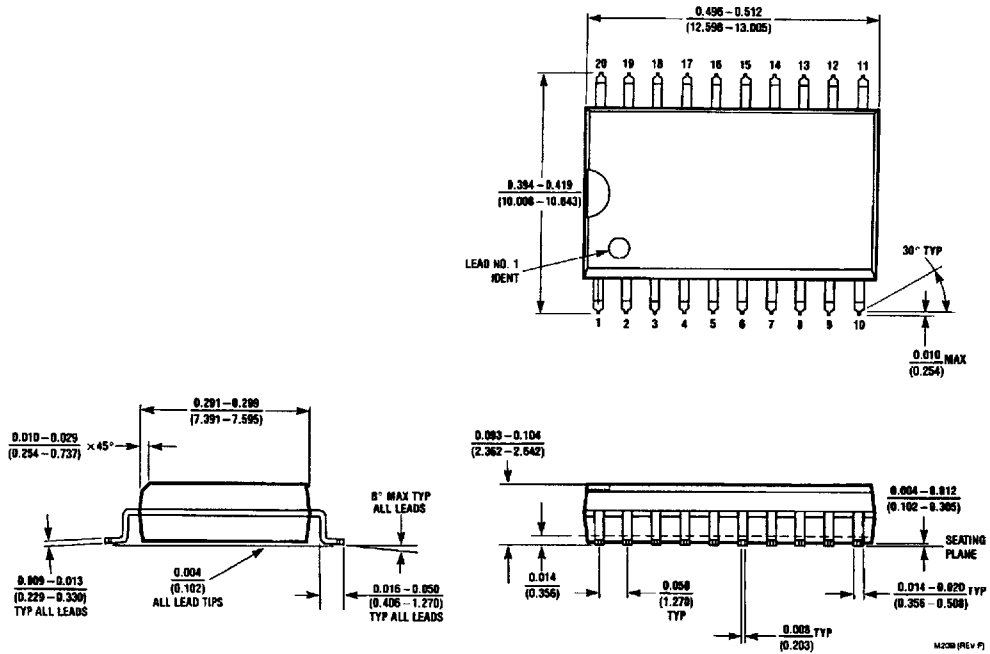
Symbol	Parameter	Conditions	Min	Typ	Max	Units
V _{IK}	Input Clamp Voltage	V _{CC} = 4.5V, I _I = -18 mA			-1.2	V
V _{OH}	High Level Output Voltage	I _{OH} = -2 mA, V _{CC} = 4.5V to 5.5V	V _{CC} - 2			V
		I _{OH} = -3 mA, V _{CC} = 4.5V	2.4	3.2		
		I _{OH} = Max, V _{CC} = 4.5V	2			
V _{OL}	Low Level Output Voltage	V _{CC} = 4.5V, I _{OL} = Max, V _{IH} = 2V			0.5	V
I _I	Input Current at Maximum Input Voltage	V _{CC} = 5.5V, V _I = 7V			100	μA
I _{IH}	High Level Input Current	V _{CC} = 5.5V, V _I = 2.7V			20	μA
I _{IL}	Low Level Input Current	V _{CC} = 5.5V, V _I = 0.4V			-500	μA
I _O	Output Drive Current	V _{CC} = 5.5V, V _O = 2.25V	-50	-135	-200	mA
I _{CCH}	Supply Current with Outputs High	V _{CC} = 5.5V		6.5	10	mA
I _{CCL}	Supply Current with Outputs Low	V _{CC} = 5.5V		20	32	mA

Switching Characteristics over recommended operating free air temperature range (Note 1)

Symbol	Parameter	Conditions (Note 1)	Min	Max	Units
T _{PLH}	Propagation Delay Time Low to High Level Output	V _{CC} = 4.5V to 5.5V R _L = 500Ω C _L = 50 pF	1	4.3	ns
T _{PHL}	Propagation Delay Time High to Low Level Output		1	4.3	ns

Note 1: See Section 5 for test waveforms and output load.

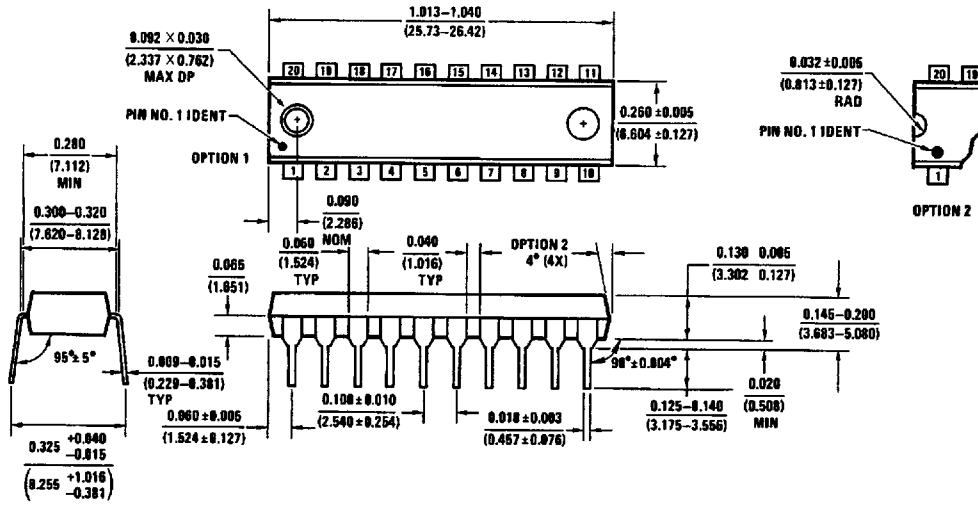
Physical Dimensions inches (millimeters)



Small Outline Package (M)
Order Number DM74AS1805WM
NS Package Number M20B

Physical Dimensions inches (millimeters) (Continued)

Lit. # 102707



Molded Dual-In-Line Package (N)
Order Number DM74AS1805N
NS Package Number N20A

N20A (REV Q)

LIFE SUPPORT POLICY

NATIONAL'S PRODUCTS ARE NOT AUTHORIZED FOR USE AS CRITICAL COMPONENTS IN LIFE SUPPORT DEVICES OR SYSTEMS WITHOUT THE EXPRESS WRITTEN APPROVAL OF THE PRESIDENT OF NATIONAL SEMICONDUCTOR CORPORATION. As used herein:

1. Life support devices or systems are devices or systems which, (a) are intended for surgical implant into the body, or (b) support or sustain life, and whose failure to perform, when properly used in accordance with instructions for use provided in the labeling, can be reasonably expected to result in a significant injury to the user.
2. A critical component is any component of a life support device or system whose failure to perform can be reasonably expected to cause the failure of the life support device or system, or to affect its safety or effectiveness.

	National Semiconductor Corporation 1111 West Bardin Road Arlington, TX 76017 Tel: 1(800) 272-9959 Fax: 1(800) 737-7018 http://www.national.com	National Semiconductor Europe Fax: +49 (0) 180-530 85 86 Email: europe.support@nsc.com Deutsch Tel: +49 (0) 180-530 85 85 English Tel: +49 (0) 180-532 78 32 Français Tel: +49 (0) 180-532 93 58 Italiano Tel: +49 (0) 180-534 16 80	National Semiconductor Hong Kong Ltd. 13th Floor, Straight Block, Ocean Centre, 5 Canton Rd. Tsimshatsui, Kowloon Hong Kong Tel: (852) 2737-1600 Fax: (852) 2736-9960	National Semiconductor Japan Ltd. Tel: 81-043-299-2308 Fax: 81-043-299-2408
--	--	---	--	--

National does not assume any responsibility for use of any circuitry described, no circuit patent licenses are implied and National reserves the right at any time without notice to change said circuitry and specifications.