

MATERIALS AND FINISHES:

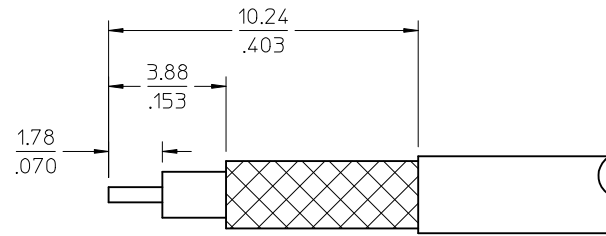
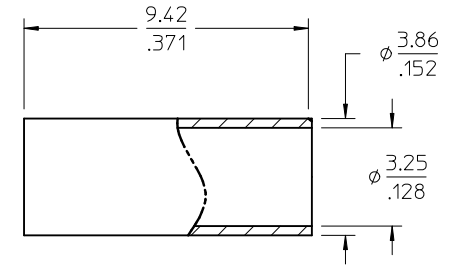
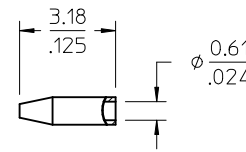
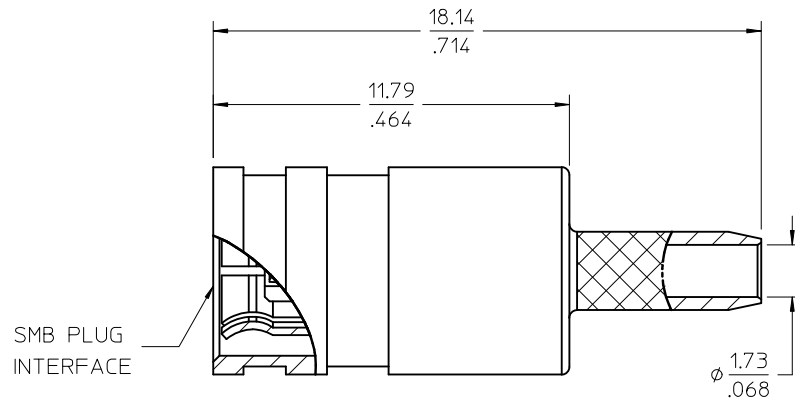
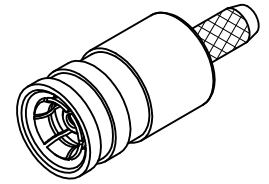
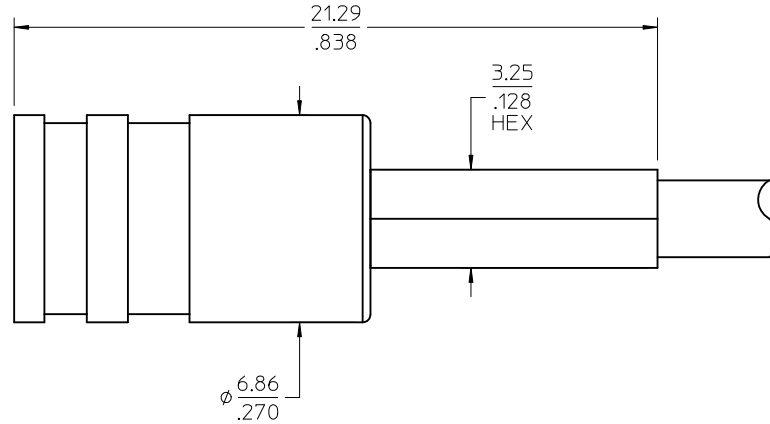
BODY, CRIMP TUBE BRASS
PLATED NICKEL

CONTACT BERYLLIUM COPPER
PLATED GOLD

INSULATOR TEFLON

OUTER CONTACT BERYLLIUM COPPER
PLATED NICKEL

CABLE CONTACT BRASS
PLATED GOLD



RECOMMENDED STRIPPING DIMENSIONS

PART # 73404-2950

MIL-STD-348A, FIG. 311-2	INTERFACE
SPECIFICATION	DESCRIPTION

CHG: NEW RELEASE EC NO: URF-2011-0548 DRW:SSHAN 2011/02/21 CHKD:ROBERTSON 2011/03/17 APPR:JWIENER 2011/03/18	QUALITY SYMBOLS	GENERAL TOLERANCES (UNLESS SPECIFIED)	DIMENSION STYLE	SCALE	DESIGN UNITS	THIRD ANGLE PROJECTION
	▽=0		mm INCH	MM/IN	METRIC	☉
	▽=0		4 PLACES ± --- ± ---	DRAWN BY DATE	TITLE	
			3 PLACES ± --- ± ---	SSHAH 2011/02/21	SMB PLUG STR IP54	
	2 PLACES ± --- ± ---	CHECKED BY DATE	AROBERTSON 2011/03/17	50 OHMS RG174		
	1 PLACE ± --- ± ---	APPROVED BY DATE	JWIENER 2011/03/18	EWR-4629 SMB-PC		
		ANGULAR ± 2 °	MATERIAL NO.	DOCUMENT NO.	SHEET NO.	
			734042950	SD-73404-295	1 OF 1	
		DRAFT WHERE APPLICABLE MUST REMAIN WITHIN DIMENSIONS	SIZE	THIS DRAWING CONTAINS INFORMATION THAT IS PROPRIETARY TO MOLEX INCORPORATED AND SHOULD NOT BE USED WITHOUT WRITTEN PERMISSION		
			C			