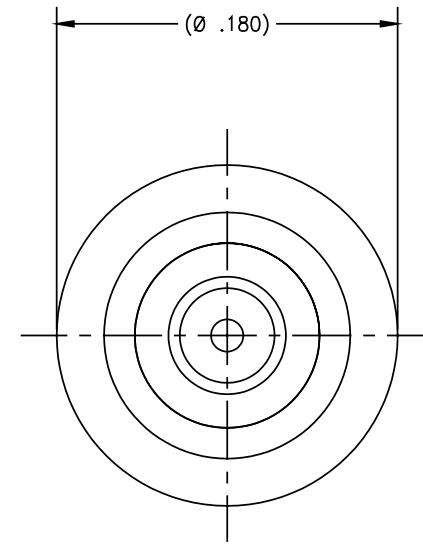
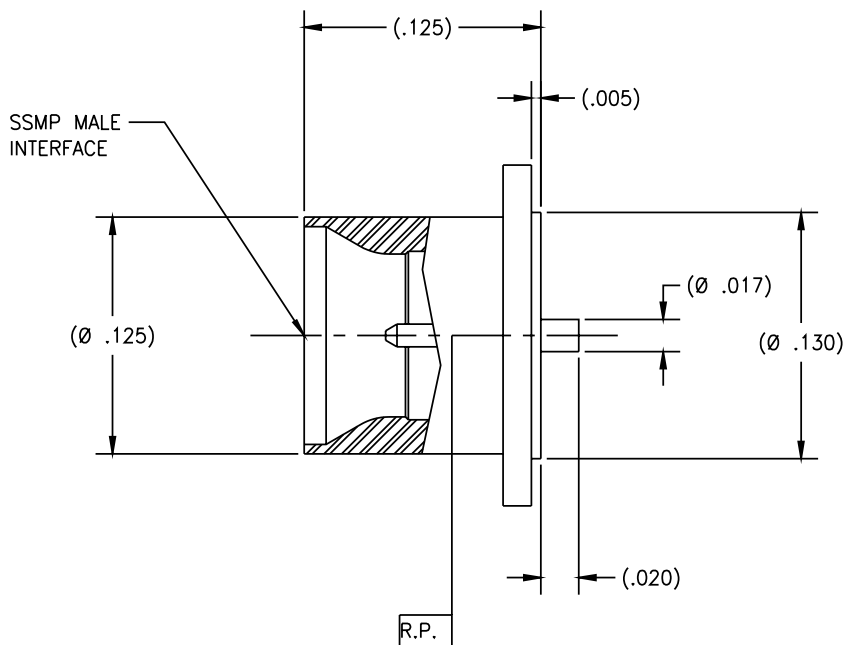


P/N	APPLICABLE NOTES
-1CC	1,2,3

REVISIONS				
ZONE	REV	DESCRIPTION	DATE	BY
-	A	ECO 11825	07/07/00	IMG



DRAWING NO.	P313	REV.	A
-------------	------	------	---

- NOTE(S):
- MATERIAL(S):
 - BODY: AL 6262-T9 PER ASTM B-211
 - CENTER CONTACT: BeCu ALLOY PER ASTM B-196 OR B-197
 - INSULATOR: FLUOROLOY H
 - FINISH(ES):
 - BODY & CONTACT: GOLD PLATE PER ASTM B-488 OVER NICKEL PLATE PER QQ-N-290
 - INSULATOR: NONE
 - ELECTRICAL PERFORMANCE(S):
 - FREQUENCY RANGE: DC-26.5GHZ
 - R.F INSERTION LOSS: 0.2dB MAX TO 26.5GHZ
 - VSWR: 1.35:1 MAX TO 26.5GHZ

NOTICE
 THIS DRAWING EMBODIES A CONFIDENTIAL PROPRIETARY DESIGN ORIGINATED BY TENSOLITE COMPANY AND ALL DESIGN, MANUFACTURING REPRODUCTION, USE AND SALE RIGHTS REGARDING THE SAME ARE EXPRESSLY RESERVED. IT IS SUBMITTED UNDER A CONFIDENTIAL RELATIONSHIP FOR A SPECIFIED PURPOSE AND THE RECIPIENT AGREES BY ACCEPTING THIS DRAWING NOT TO SUPPLY OR DISCLOSE ANY INFORMATION REGARDING IT TO ANY UNAUTHORIZED PERSON OR TO INCORPORATE IN OTHER PRODUCTS ANY SPECIAL FEATURES PECULIAR TO THIS DESIGN. ALL PATENT RIGHTS HERETO ARE EXPRESSLY RESERVED BY TENSOLITE COMPANY, LONG BEACH, CALIFORNIA 90815.

TOLERANCES AND NOTES EXCEPT AS NOTED		-			
DIMENSIONS ARE IN INCHES. LINEAR .XXX ±.016 FRACTION ± 1/32		MATERIAL	SIZE	SPECIFICATION	PROCUREMENT
1. MACHINE FINISH: $\sqrt{\text{RUS}}$		Tensolite Microwave Connectors Long Beach, California 90815			
2. BREAK ALL SHARP EDGES .003 MAX.		APPROVAL INITIALS	DATE	TITLE	
3. MACHINED FILLETS .005 MAX.		DRAWN BY: DKN	08.06.99	SSMP MALE DETENT SURFACE MOUNT	
4. MACHINED SURFACES SQUARE TO RESPECTIVE AXIS WITHIN .005 INCHES PER INCH.		CHECKED		SCALE	SUB-DIRECTORY FILENAME
5. MACHINED DIAMETERS CONCENTRIC WITHIN .002 T.I.R.		QUALITY		NONE	OLPXX\OLP313
6. DIMENSIONS TO BE MET BEFORE PLATING.		ENGINEERING	ATV	07.20.00	SHEET 1 of 1
7. CHAMFER ALL THREADS 45°.		SIZE	CAGE CODE	DRAWING NO.	REV.
8. THREADS PER H-28		C	30990	P313	A
9. REMOVE FRAYED EDGES ON TEFLON.					
10. REMOVE ALL BURRS.					