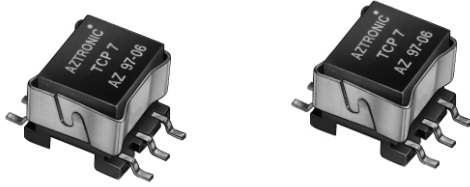


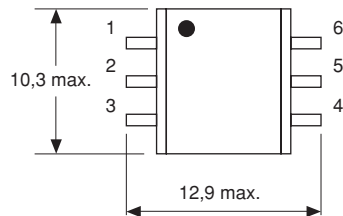
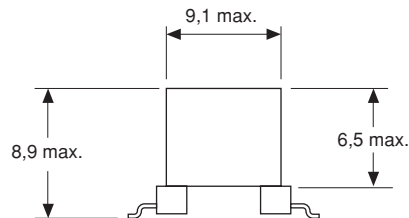
## SMD Current Transformers



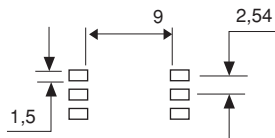
### FEATURES

- TCP7 transformer is designed for AC current measurement for frequencies from 20kHz to 200kHz with complete isolation of circuits
- Main applications: DC/DC converter, switching power supplies or any electronic device
- Tape and reel packaging allows automatic pick and place

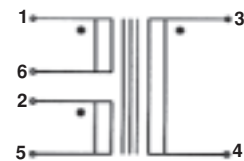
### DIMENSIONS in millimeters



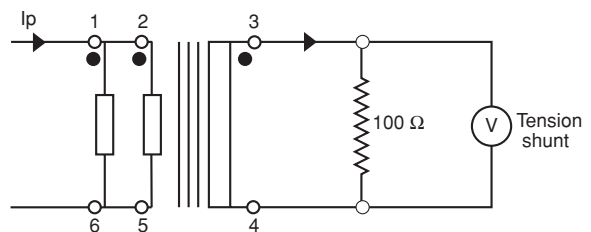
### RECOMMENDED SOLDERING PAD



### ELECTRICAL DIAGRAM



### TYPICAL APPLICATION



### MECHANICAL SPECIFICATIONS

Ferrite	EP7
Case	SMD shell
Configuration	6 pins
Unit Weight	2g

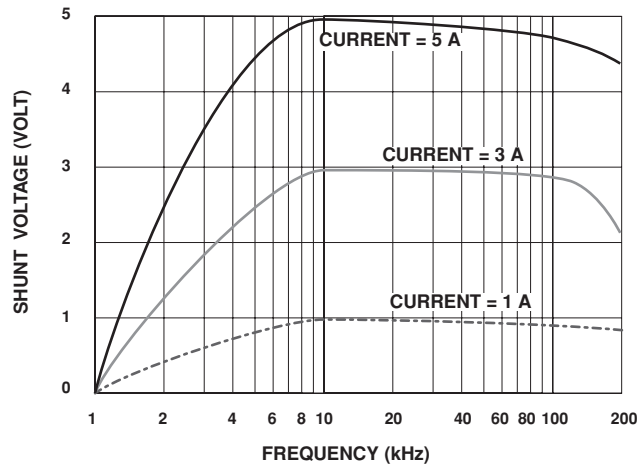
### CLIMATIC SPECIFICATIONS

Working Temperature Range - 20°C + 85°C

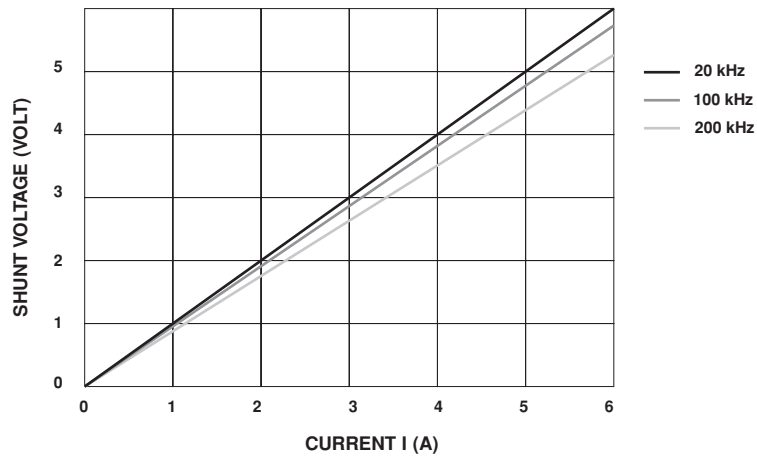
### ELECTRICAL SPECIFICATIONS

Frequency Range	20kHz to 200kHz
Dielectric Strength	1500VRMS
Primary Resistance 1-6//2-5 max	10MΩ
Secondary Resistance 3-4 max	4.2Ω
Maximum Primary Current	5A
On 100Ω load to add to the circuit	
Primary Peak Current	15A

**FREQUENCY VERSUS VOLTAGE**



**CURRENT VERSUS VOLTAGE**



**PACKAGING**

250 pieces tape and reel

**MARKING**

Print marked: manufacturer, series, manufacturing date (code), pin 1.

**ORDERING INFORMATION**

TCP7

SERIES