

COAXIAL RESONATOR OSCILLATOR

SURFACE MOUNT MODEL: SYN1740N

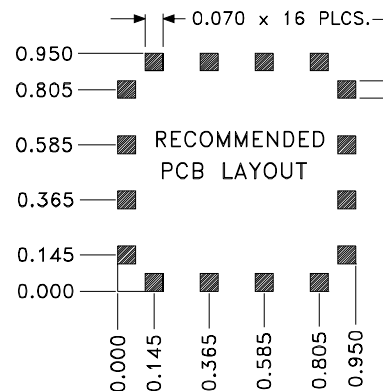
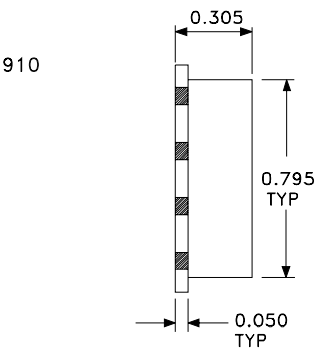
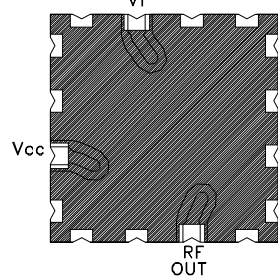
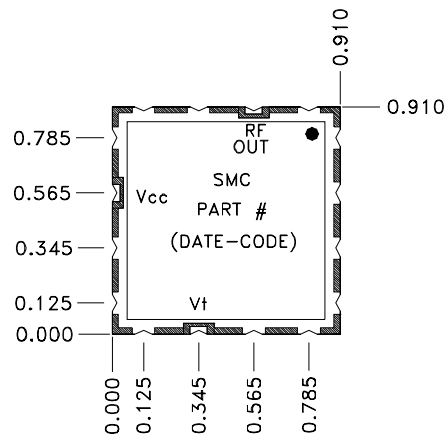
OPTIMIZED FREQUENCY

1740 MHz

SPECIFICATIONS

Oscillator Center Frequency:	1740 MHz	Phase Noise:	(Typ) / (Max)
Tuning Voltage:	1 to 8 VDC (Nom)	@ 10 kHz offset	-118 dBc/Hz / -116 dBc/Hz
Output Power:	10 dBm \pm 2dB	@ 100 kHz offset	-139 dBc/Hz / -136 dBc/Hz
Avg. Tuning Sensitivity:	2.5 MHz/V	@ 1 MHz offset	-156 dBc/Hz / -154 dBc/Hz
Bias Voltage:	10 VDC @ 40mA	@ 10 MHz offset	-165 dBc/Hz / -160 dBc/Hz
Harmonic Suppression:	-20 dBc (Typ)/-10 dBc (Max)	Pulling:	2 MHz @ 1.75:1 VSWR (Max)
Tuning Port Capacitance:	47 pF(Max)	Pushing:	2 MHz/V(Max)
Frequency Drift w/ Temp.:	\pm 2 MHz(Max)	Output Impedance	50 ohms
VSWR	1.5:1 (Typ)	Operating Temp. Range:	-20° to +70°C

MECHANICAL OUTLINE: 165SL

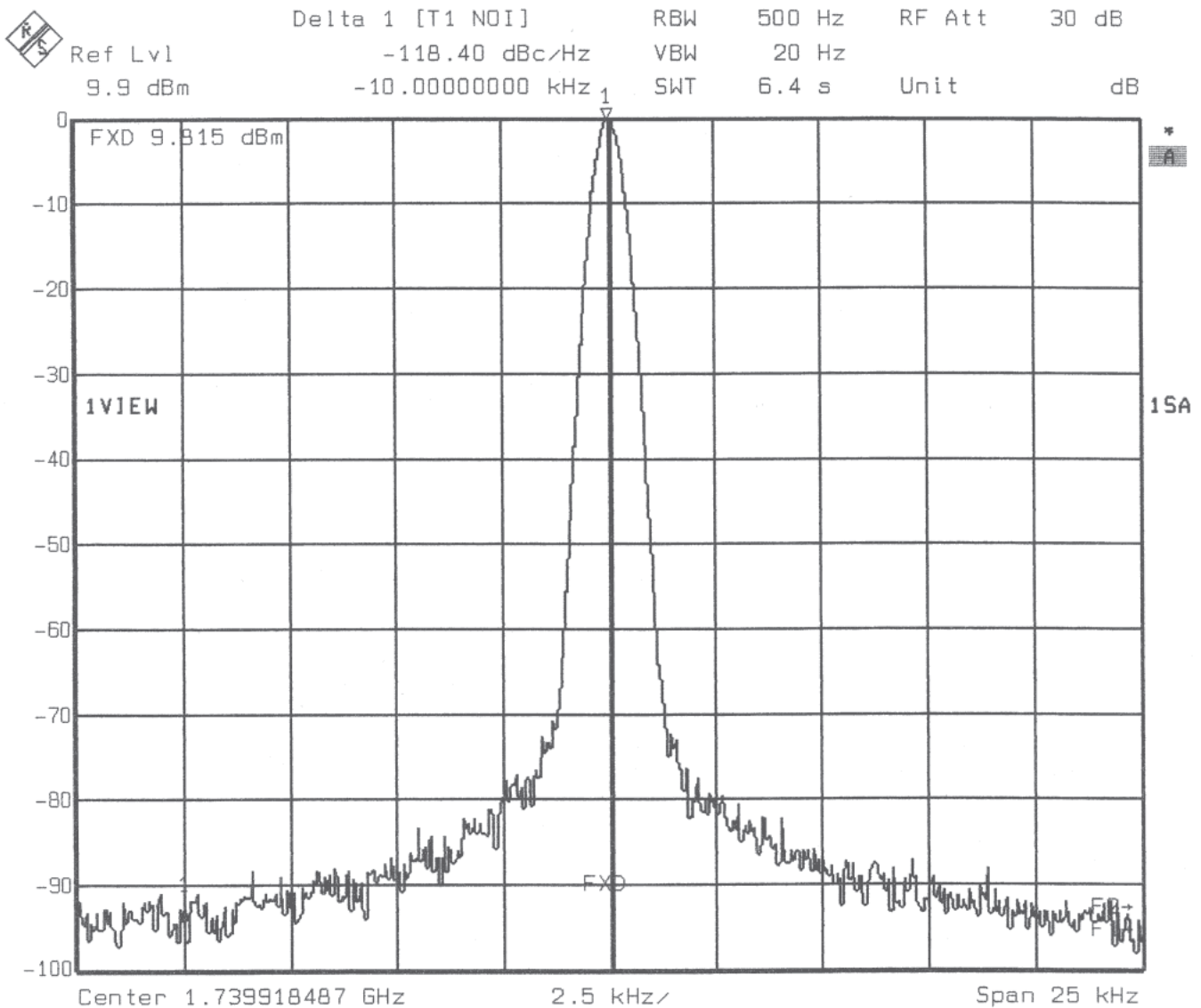


COAXIAL RESONATOR OSCILLATOR SURFACE MOUNT MODEL: SYN1740N

OPTIMIZED FREQUENCY

1740 MHz

PERFORMANCE PLOTS



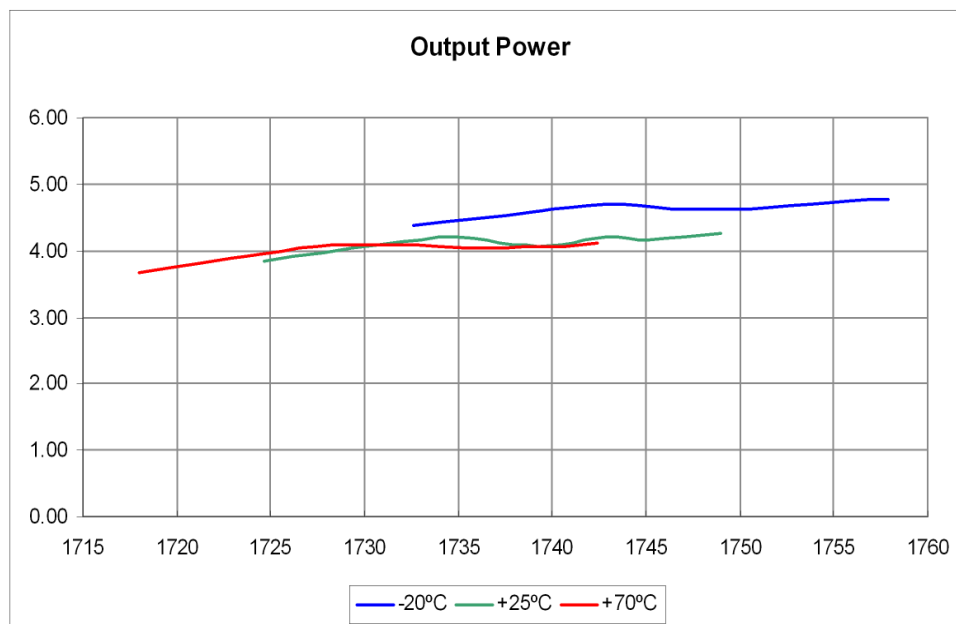
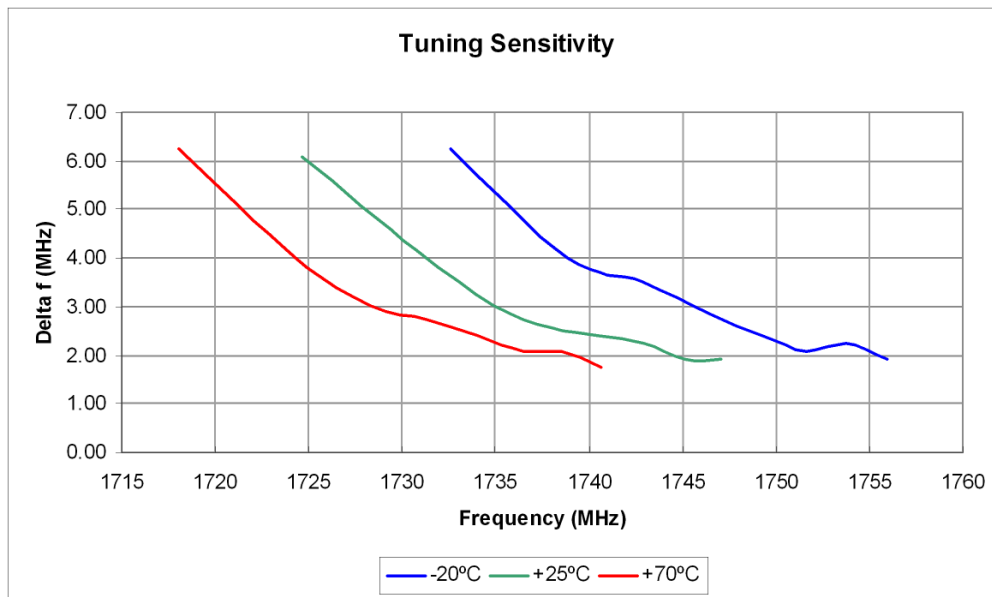
COAXIAL RESONATOR OSCILLATOR

SURFACE MOUNT MODEL: SYN1740N

OPTIMIZED FREQUENCY

1740 MHz

PERFORMANCE PLOTS



COAXIAL RESONATOR OSCILLATOR SURFACE MOUNT MODEL: SYN1740N

OPTIMIZED FREQUENCY

1740 MHz

