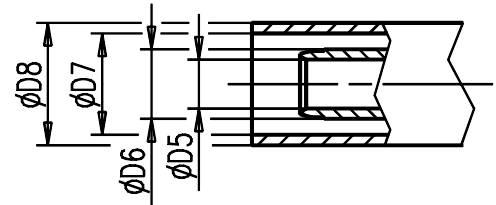
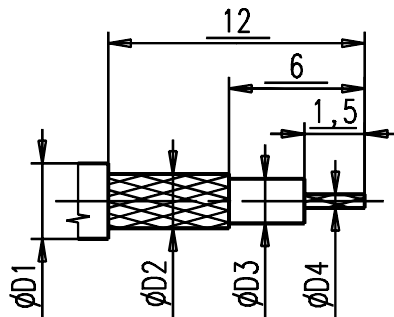
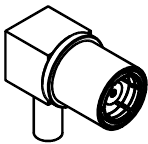


Kabelzuschnitt
Stripping dimension

M/scale1:1



Fuer Kabel /
For cable

Gr.	Type Typ	φD1 nom.	φD2 nom.	φD3 nom.	φD4 nom.	φD5	φD6	φD7	φD8	Crimp Aussen/out	Crimp Innen/in
2	RG 179 B/U	2,50	2,00	1,50	0,30	1,70	2,60	3,20	3,80	3,25	solder
	11-RX174-NE	2,63	2,10	1,60	0,35	1,70	2,60	3,20	3,80	3,25	solder

IMS CONNECTOR SYSTEMS

general tolerance
ISO 2768
mH

75Ω

scale: 5:1

Assembly instruction:
Stripping dimension:

date name
11.04.02 Schwaer
generate
checked
Norm
38543

Kabelwinkelbuchse
Cable mount angle jack



3477.11.2420.02'

Rev.

nr. rev. alteration date name