

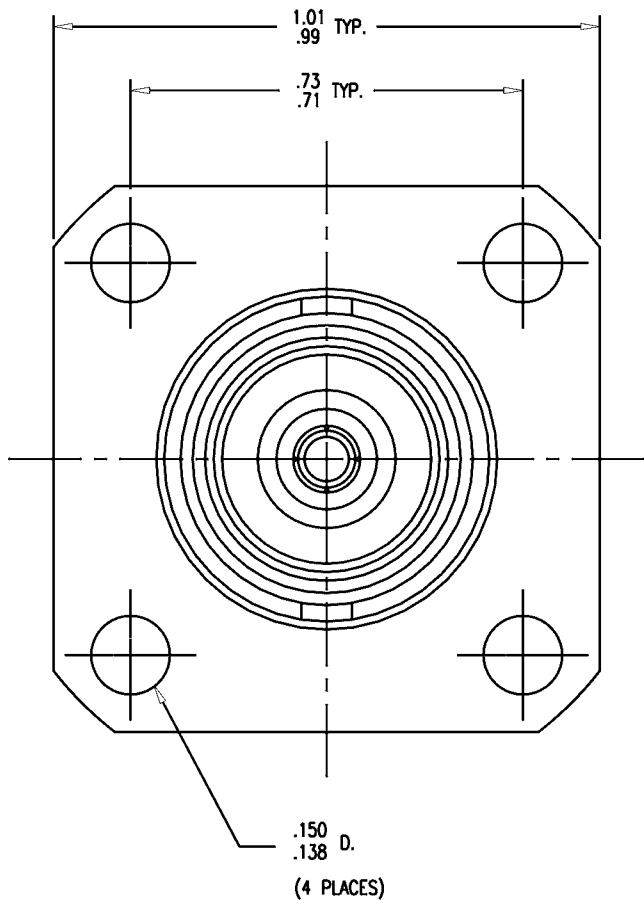
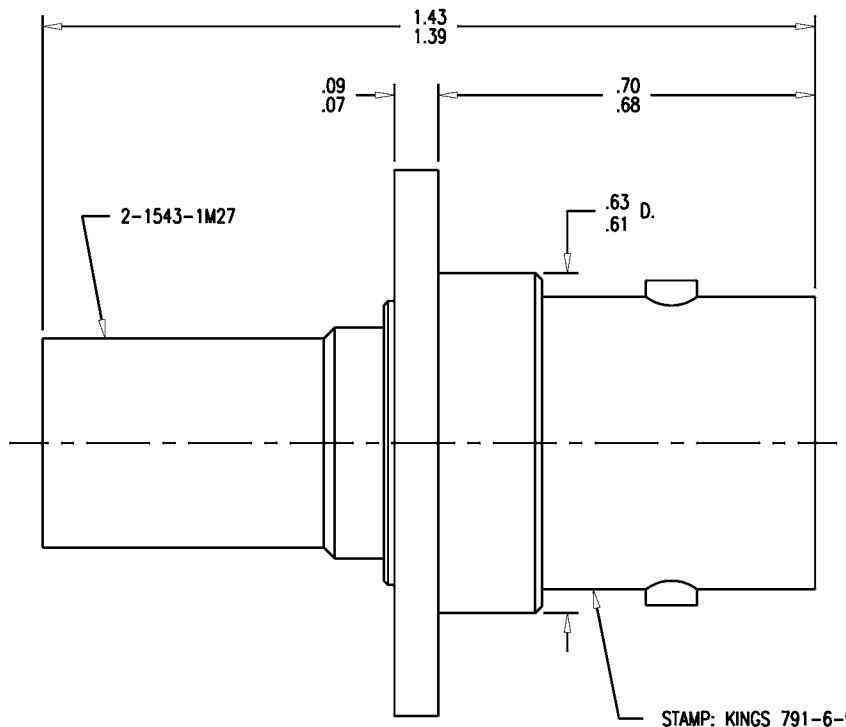
DASH NO.	M CODE	MADE FROM
----------	--------	-----------

# GSD

### REVISIONS

ISSUE	CHANGES
0	ER 34040 KH 08/20/92

791-6-9



**NOTES:**

1. FOR USE WITH BOEING S280W503-4 & ADAMS RUSSELL FC28Z CABLE.
2. FOR CABLING INSTRUCTIONS SEE 3-546-2.
3. FOR CRIMPING USE DIE KTH-2212
4. INTERFACE PER MIL-STD-348, FIG. 302-2.
5. FOR USE WITH .188 MAX. PANEL
6. CENTER CONTACT (1-842-30MA9) SUPPLIED UNASSEMBLED.
7. MARK PACKAGE: KINGS 791-6-9  
XXXX (DATE CODE)
8. MATERIALS:  
INSULATOR-TEFLON, ASTM-D-1457  
K-GRIP SLEEVE-COMMERCIAL BRONZE, ALLOY 220  
CENTER CONTACT-BER. COP., ASTM-B-196  
ALL OTHER METAL PARTS-BRASS, ASTM-B16
9. FINISHES:  
CENTER CONTACT-GOLD PLATE PER MIL-G-45204  
ALL OTHER METAL PARTS-KINGS TARNISH RESISTANT FINISH (TR-5)
10. ELECTRICAL CHARACTERISTICS:  
NOMINAL IMPEDANCE-50 OHMS  
FREQUENCY RANGE-DC TO 11 GHZ  
WORKING VOLTAGE-1000 VRMS

KAM2018

SCALE	4:1	
APPROX SURFACE AREA		
WAS:	E-17486	
USED ON		
REF:	BOEING	
<b>JACK, PANEL, C</b>		
DRAWN	KH	DATE 06/01/92
DESIGN	JT	DATE 06/02/92
APPR.		DATE

# GSD

**KINGS**  
ELECTRONICS CO., INC.  
TUCKAHOE, NEW YORK 10707

791-6-9