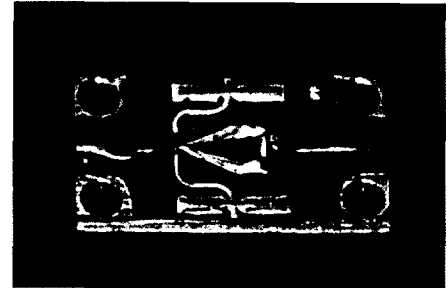




Double Balanced Mixers

COMMUNICATIONS BAND MIXERS

- ◆ Wide Range of Connection Types including SMA, Pin, Drop-In, Tab
- ◆ High Isolation
- ◆ Low Conversion Loss
- ◆ Quick Delivery Time
- ◆ Low Cost



Operating Temperature Range = -55°C to +100°C

Storage Temperature Range = -65°C to +125°C

Specification @ +25°C

MODEL NO.	RF (GHz)	LO (GHz)	IF (GHz)	LO Power (dBm)	Convrnsn. Loss (dB) Typ/Max	L-R Iso (dB) Typ/Min	L-I Iso (dB) Typ/Min	1 dB Comp (dBm)	Input TOIP (dBm)	PACKAGE STYLES AVAILABLE ¹
C36H	3.6 - 4.3	4.7 - 5.4	DC - 1.5	+7	5.0 / 5.8	35 / 25	33 / 21	+1	+11	W1,W2,X,Y
C36K	3.6 - 4.3	4.7 - 5.4	DC - 1.5	+10	5.0 / 5.8	35 / 25	33 / 21	+4	+14	W1,W2,X,Y
C36A	3.6 - 4.3	4.7 - 5.4	DC - 1.5	+13	5.0 / 5.8	35 / 25	33 / 21	+8	+18	W1,W2,X,Y
C58H	5.8 - 6.5	4.7 - 5.4	DC - 1.5	+7	5.0 / 5.8	45 / 28	38 / 21	+1	+11	W1,W2,X,Y
"	"	"	"	"	"	42 / 26	36 / 20	"	"	W1,W2,X,Y
C58K	5.8 - 6.5	4.7 - 5.4	DC - 1.5	+10	5.0 / 5.8	45 / 28	38 / 21	+4	+14	W1,W2,X,Y
"	"	"	"	"	"	42 / 26	36 / 20	"	"	W1,W2,X,Y
C58A	5.8 - 6.5	4.7 - 5.4	DC - 1.5	+13	5.0 / 5.8	45 / 28	38 / 21	+7	+17	W1,W2,X,Y
"	"	"	"	"	"	42 / 26	36 / 20	"	"	W1,W2,X,Y
C58V	5.8 - 6.5	4.7 - 5.4	DC - 1.5	+16	5.0 / 5.8	45 / 28	38 / 21	+10	+19	W1,W2,X,Y
"	"	"	"	"	"	42 / 26	36 / 20	"	"	W1,W2,X,Y
C59H	5.9 - 6.4	4.8 - 5.3	DC - 1.1	+7	5.5 / 6.5	30 / 20	30 / 19	+1	+11	W1,W2,X,Y
C59K	5.9 - 6.4	4.8 - 5.3	DC - 1.1	+10	5.5 / 6.5	30 / 20	30 / 19	+4	+14	W1,W2,X,Y
C59A	5.9 - 6.4	4.8 - 5.3	DC - 1.1	+13	5.5 / 6.5	30 / 20	30 / 19	+7	+17	W1,W2,X,Y
C59V	5.9 - 6.4	4.8 - 5.3	DC - 1.1	+16	5.5 / 6.5	30 / 20	30 / 19	+10	+19	W1,W2,X,Y
C59Q	5.9 - 6.4	4.8 - 5.3	DC - 1.1	+19	5.5 / 6.5	30 / 20	30 / 19	+12	+20	W1,W2,X,Y
C50H	5.0 - 9.0	5.0 - 9.0	DC - 2.0	+7	5.0 / 5.7	30 / 20	30 / 19	+1	+11	W1,W2,X,Y
C50K	5.0 - 9.0	5.0 - 9.0	DC - 2.0	+10	5.0 / 5.7	30 / 20	30 / 19	+4	+14	W1,W2,X,Y
C50A	5.0 - 9.0	5.0 - 9.0	DC - 2.0	+13	5.0 / 5.7	30 / 20	30 / 19	+7	+17	W1,W2,X,Y
C55H	5.5 - 9.0	5.5 - 9.0	DC - 1.5	+7	5.0 / 5.8	30 / 20	24 / 18	+1	+11	W1,W2,X,Y
C55K	5.5 - 9.0	5.5 - 9.0	DC - 1.5	+10	5.0 / 5.8	30 / 20	24 / 18	+4	+14	W1,W2,X,Y
C55A	5.5 - 9.0	5.5 - 9.0	DC - 1.5	+13	5.0 / 5.8	30 / 20	24 / 18	+7	+17	W1,W2,X,Y
C55V	5.5 - 9.0	5.5 - 9.0	DC - 1.5	+16	5.0 / 5.8	30 / 20	24 / 18	+10	+19	W1,W2,X,Y
C55Q	5.5 - 9.0	5.5 - 9.0	DC - 1.5	+19	5.0 / 5.8	30 / 20	24 / 18	+12	+20	W1,W2,X,Y
C11H	10.9 - 12.8	11.9 - 14.0	DC - 2.0	+7	5.5 / 6.2	32 / 24	30 / 22	+1	+11	W1,W2,X,Y,Z
C11K	10.9 - 12.8	11.9 - 14.0	DC - 2.0	+10	5.5 / 6.2	32 / 24	30 / 22	+4	+14	W1,W2,X,Y,Z
C11A	10.9 - 12.8	11.9 - 14.0	DC - 2.0	+13	5.5 / 6.2	32 / 24	30 / 22	+7	+17	W1,W2,X,Y,Z
C11V	10.9 - 12.8	11.9 - 14.0	DC - 2.0	+16	5.5 / 6.5	32 / 24	32 / 23	+10	+19	W1,W2,X,Y,Z
C11Q	10.9 - 12.8	11.9 - 14.0	DC - 2.0	+19	5.5 / 6.5	32 / 24	32 / 23	+12	+20	W1,W2,X,Y,Z

¹ To indicate package style, add it to the end of the model number. See page 6 for package style specifications. (i.e. C55VXSP - C55V with Package Style X, SMA Connectors and Optional Spacer Plate)

Double Balanced Mixers

COMMUNICATIONS BAND MIXERS (Continued)

MODEL NO.	RF (GHz)	LO (GHz)	IF (GHz)	LO Power (dBm)	Convrnsn. Loss (dB) Typ/Max	L-R Iso (dB) Typ/Min	L-I Iso (dB) Typ/Min	1 dB Comp (dBm)	Input TOIP (dBm)	PACKAGE STYLES AVAILABLE ¹
C13H	13.8 - 14.7	11.8 - 13.8	DC - 2.0	+7	5.5 / 6.2	42 / 25	35 / 23	+1	+11	W1,W2,X,Y,Z
C13K	13.8 - 14.7	11.8 - 13.8	DC - 2.0	+10	5.5 / 6.2	42 / 25	35 / 23	+4	+14	W1,W2,X,Y,Z
C13A	13.8 - 14.7	11.8 - 13.8	DC - 2.0	+13	5.5 / 6.2	42 / 25	35 / 23	+7	+17	W1,W2,X,Y,Z
C13V	13.8 - 14.7	11.8 - 13.8	DC - 2.0	+16	5.5 / 6.5	42 / 25	35 / 23	+10	+19	W1,W2,X,Y,Z
C13Q	13.8 - 14.7	11.8 - 13.8	DC - 2.0	+19	5.5 / 6.5	42 / 25	35 / 23	+12	+20	W1,W2,X,Y,Z
C14H	14.0 - 14.5	14.0 - 14.5	DC - 3.0	+7	5.5 / 6.5	33 / 21	30 / 20	+1	+11	W1,W2,X,Y,Z
C14K	14.0 - 14.5	14.0 - 14.5	DC - 3.0	+10	5.5 / 6.5	33 / 21	30 / 20	+4	+14	W1,W2,X,Y,Z
C14A	14.0 - 14.5	14.0 - 14.5	DC - 3.0	+13	5.5 / 6.5	33 / 21	30 / 20	+7	+17	W1,W2,X,Y,Z
C14V	14.0 - 14.5	14.0 - 14.5	DC - 3.0	+16	5.5 / 6.5	33 / 21	30 / 20	+10	+19	W1,W2,X,Y,Z
C14Q	14.0 - 14.5	14.0 - 14.5	DC - 3.0	+19	5.5 / 6.5	33 / 21	30 / 20	+12	+20	W1,W2,X,Y,Z

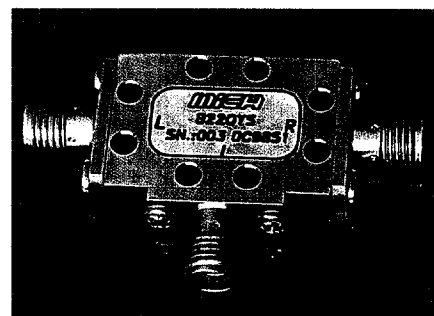
BROADBAND MIXERS

- ◆ Complete Customization Available on All Specifications
- ◆ Broadband Frequency Coverage
- ◆ Wide Range of Connection Types including SMA, Pin, Drop-In, Tab
- ◆ Excellent Performance and Temperature Stability
- ◆ Optional MIL-STD-883C Screening Available

Operating Temperature Range = -55°C to +100°C

Storage Temperature Range = -65°C to +125°C

Specification @ +25°C



MODEL NO.	RF (GHz)	LO (GHz)	IF (GHz)	LO Power (dBm)	Convrnsn. Loss (dB) Typ/Max	L-R Iso (dB) Typ/Min	L-I Iso (dB) Typ/Min	1 dB Comp (dBm)	Input TOIP (dBm)	PACKAGE STYLES AVAILABLE ¹
B20H	2.0 - 8.0	2.0 - 8.0	DC - 1.5	+7	6.0 / 7.2	30 / 23	33 / 22	+1	+11	W1,W2,X,Y
B20K	2.0 - 8.0	2.0 - 8.0	DC - 1.5	+10	6.0 / 7.2	30 / 23	33 / 22	+4	+14	W1,W2,X,Y
B20A	2.0 - 8.0	2.0 - 8.0	DC - 1.5	+13	6.0 / 7.2	30 / 23	33 / 22	+7	+17	W1,W2,X,Y
B20V	2.0 - 8.0	2.0 - 8.0	DC - 1.5	+16	6.0 / 7.2	30 / 23	33 / 22	+9	+19	W1,W2,X,Y
B21K	2.0 - 8.0	2.0 - 8.0	0.1 - 4.0	+10	6.2 / 7.5	26 / 20	28 / 21	+4	+14	W1,X,Y
B21A	2.0 - 8.0	2.0 - 8.0	0.1 - 4.0	+13	6.2 / 7.5	26 / 20	28 / 21	+7	+17	W1,X,Y
B21V	2.0 - 8.0	2.0 - 8.0	0.1 - 4.0	+16	6.2 / 7.5	26 / 20	28 / 21	+10	+19	W1,X,Y
B21Q	2.0 - 8.0	2.0 - 8.0	0.1 - 4.0	+19	6.2 / 7.5	26 / 20	28 / 21	+13	+21	W1,X,Y
B22K	2.0 - 8.0	2.0 - 8.0	2.0 - 6.0	+10	6.2 / 7.5	24 / 18	28 / 20	+4	+14	W1,X,Y
B22A	2.0 - 8.0	2.0 - 8.0	2.0 - 6.0	+13	6.2 / 7.5	24 / 18	28 / 20	+7	+17	W1,X,Y
B22V	2.0 - 8.0	2.0 - 8.0	2.0 - 6.0	+16	6.2 / 7.5	24 / 18	28 / 20	+10	+19	W1,X,Y
B22Q	2.0 - 8.0	2.0 - 8.0	2.0 - 6.0	+19	6.2 / 7.5	24 / 18	28 / 20	+13	+21	W1,X,Y
B23H	2.0 - 9.0	2.0 - 9.0	DC - 1.5	+7	5.7 / 7.0	30 / 22	38 / 18	+1	+11	W2,X,Y
B23K	2.0 - 9.0	2.0 - 9.0	DC - 1.5	+10	5.7 / 7.0	30 / 22	38 / 18	+4	+14	W2,X,Y
B23A	2.0 - 9.0	2.0 - 9.0	DC - 1.5	+13	5.7 / 7.0	30 / 22	38 / 18	+7	+17	W2,X,Y

¹ To indicate package style, add it to the end of the model number. See page 6 for package style specifications. (i.e. B20V_{YSP} - B20V with Package Style Y, SMA Connectors and Optional Spacer Plate)

Double Balanced Mixers

BROADBAND MIXERS (Continued)

MODEL NO.	RF (GHz)	LO (GHz)	IF (GHz)	LO Power (dBm)	Convrnsn. Loss (dB) Typ/Max	L-R Iso (dB) Typ/Min	L-I Iso (dB) Typ/Min	1 dB Comp (dBm)	Input TOIP (dBm)	PACKAGE STYLES AVAILABLE ¹
B24H	2.0 - 12.0	2.0 - 12.0	DC - 1.5	+7	5.7 / 7.0	38 / 18	35 / 18	+1	+11	W2,X,Y
B24K	2.0 - 12.0	2.0 - 12.0	DC - 1.5	+10	5.7 / 7.0	38 / 18	35 / 18	+4	+14	W2,X,Y
B24A	2.0 - 12.0	2.0 - 12.0	DC - 1.5	+13	5.7 / 7.0	38 / 18	35 / 18	+7	+17	W2,X,Y
B24V	2.0 - 12.0	2.0 - 12.0	DC - 1.5	+16	5.7 / 7.0	38 / 18	35 / 18	+10	+19	W2,X,Y
U20H	2.0 - 18.0	1.8 - 18.2	DC - 0.3	+7	6.3 / 7.2	34 / 23	34 / 25	+1	+10	W1,X,Y
U21H	2.0 - 18.0	2.0 - 18.0	DC - 0.6	+7	7.3 / 8.5	27 / 20	22 / 17	+1	+10	W1,X,Y
U20K	2.0 - 18.0	2.0 - 18.0	DC - 0.6	+10	7.3 / 8.5	27 / 20	22 / 17	+4	+13	W1,X,Y
U21K	2.0 - 18.0	2.0 - 18.0	0.1 - 4.0	+10	7.0 / 8.2	25 / 19	28 / 19	+4	+13	W1,X,Y
U22K	2.0 - 18.0	2.0 - 18.0	1.5 - 8.0	+10	6.8 / 8.2	28 / 20	26 / 19	+4	+13	W1,X,Y
U22A	2.0 - 18.0	2.0 - 18.0	1.5 - 8.0	+13	6.8 / 8.2	28 / 20	26 / 19	+7	+16	W1,X,Y
U22V	2.0 - 18.0	2.0 - 18.0	1.5 - 8.0	+16	6.8 / 8.2	28 / 20	26 / 19	+10	+19	W1,X,Y
U22Q	2.0 - 18.0	2.0 - 18.0	1.5 - 8.0	+19	6.8 / 8.2	28 / 20	26 / 19	+13	+21	W1,X,Y
U23K	2.0 - 18.0	2.0 - 18.0	2.0 - 8.0	+10	6.8 / 8.2	25 / 18	25 / 18	+4	+13	W1,X,Y
U23A	2.0 - 18.0	2.0 - 18.0	2.0 - 8.0	+13	6.8 / 8.2	25 / 18	25 / 18	+7	+16	W1,X,Y
U23V	2.0 - 18.0	2.0 - 18.0	2.0 - 8.0	+16	6.8 / 8.2	25 / 18	25 / 18	+10	+19	W1,X,Y
U23Q	2.0 - 18.0	2.0 - 18.0	2.0 - 8.0	+19	6.8 / 8.2	25 / 18	25 / 18	+13	+21	W1,X,Y
B37H	3.7 - 8.6	3.7 - 8.6	DC - 2.0	+7	6.0 / 7.5	38 / 24	30 / 20	+1	+11	W1,W2,X,Y
B37K	3.7 - 8.6	3.7 - 8.6	DC - 2.0	+10	6.0 / 7.5	38 / 24	30 / 20	+4	+14	W1,W2,X,Y
B37A	3.7 - 8.6	3.7 - 8.6	DC - 2.0	+13	6.0 / 7.5	38 / 24	30 / 20	+7	+17	W1,W2,X,Y
B37V	3.7 - 8.6	3.7 - 8.6	DC - 2.0	+16	6.0 / 7.5	38 / 24	30 / 20	+9	+19	W1,W2,X,Y
B40H	4.0 - 8.0	3.5 - 8.5	DC - 2.0	+7	6.0 / 7.5	38 / 25	30 / 20	+1	+11	W1,W2,X,Y
B40K	4.0 - 8.0	3.5 - 8.5	DC - 2.0	+10	6.0 / 7.5	38 / 25	30 / 20	+4	+14	W1,W2,X,Y
B40A	4.0 - 8.0	3.5 - 8.5	DC - 2.0	+13	6.0 / 7.5	38 / 25	30 / 20	+7	+17	W1,W2,X,Y
B40V	4.0 - 8.0	3.5 - 8.5	DC - 2.0	+16	6.0 / 7.5	38 / 25	30 / 20	+9	+19	W1,W2,X,Y
B50H	5.0 - 18.0	5.0 - 18.0	DC - 4.0	+7	6.2 / 7.3	35 / 22	30 / 20	+1	+11	W1,W2,X,Y,Z
B50K	5.0 - 18.0	5.0 - 18.0	DC - 4.0	+10	6.2 / 7.3	35 / 22	30 / 20	+4	+14	W1,W2,X,Y,Z
B50A	5.0 - 18.0	5.0 - 18.0	DC - 4.0	+13	6.2 / 7.3	35 / 22	30 / 20	+7	+17	W1,W2,X,Y,Z
B50V	5.0 - 18.0	5.0 - 18.0	DC - 4.0	+16	6.2 / 7.3	35 / 22	30 / 20	+10	+19	W1,W2,X,Y,Z
B62K	6.0 - 12.5	5.0 - 15.0	DC - 2.0	+10	6.0 / 7.5	38 / 25	30 / 20	+4	+14	W1,W2,X,Y,Z
B60H	6.0 - 18.0	6.0 - 18.0	DC - 4.0	+7	6.0 / 7.2	38 / 23	28 / 20	+1	+11	W1,W2,X,Y,Z
B60K	6.0 - 18.0	6.0 - 18.0	DC - 4.0	+10	6.0 / 7.2	38 / 23	28 / 20	+4	+14	W1,W2,X,Y,Z
B60A	6.0 - 18.0	6.0 - 18.0	DC - 4.0	+13	6.0 / 7.2	38 / 23	28 / 20	+7	+17	W1,W2,X,Y,Z
B60V	6.0 - 18.0	6.0 - 18.0	DC - 4.0	+16	6.0 / 7.2	38 / 23	28 / 20	+10	+19	W1,W2,X,Y,Z
B61K	6.0 - 18.0	6.0 - 18.0	1.5 - 8.0	+10	7.0 / 8.5	28 / 20	26 / 17	+4	+14	W1,X,Y,Z
B61A	6.0 - 18.0	6.0 - 18.0	1.5 - 8.0	+13	7.0 / 8.5	28 / 20	26 / 17	+7	+17	W1,X,Y,Z
B61V	6.0 - 18.0	6.0 - 18.0	1.5 - 8.0	+16	7.0 / 8.5	28 / 20	26 / 17	+10	+19	W1,X,Y,Z
B61Q	6.0 - 18.0	6.0 - 18.0	1.5 - 8.0	+19	7.0 / 8.5	28 / 20	26 / 17	+13	+21	W1,X,Y,Z

¹ To indicate package style, add it to the end of the model number. See page 6 for package style specifications. (i.e. B50VXSP - B50V with Package Style X, SMA Connectors and Optional Spacer Plate)