

**(5.00 mm) .1969"**

# HERMAPHRODITIC 30 A POWER SYSTEM

## SPECIFICATIONS

For complete specifications see [www.samtec.com?MPPT](http://www.samtec.com?MPPT)

**Insulator Material:**

Black LCP

**Terminal Material:**

Copper Alloy

**Plating:**

Sn or Au over 50 μ" (1.27 μm) Ni

**Operating Temp Range:**

-55 °C to +105 °C with Tin;

-55 °C to +125 °C with Gold

**Voltage Rating:**

600 VAC/848 VDC

**Standard Creepage:**

(2.95 mm) .116"

**Standard Clearance:**

(2.71 mm) .106"

**RoHS Compliant:**

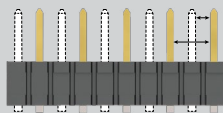
Yes

**Lead-Free Solderable:**

Yes

**Mates with:**  
MPPT

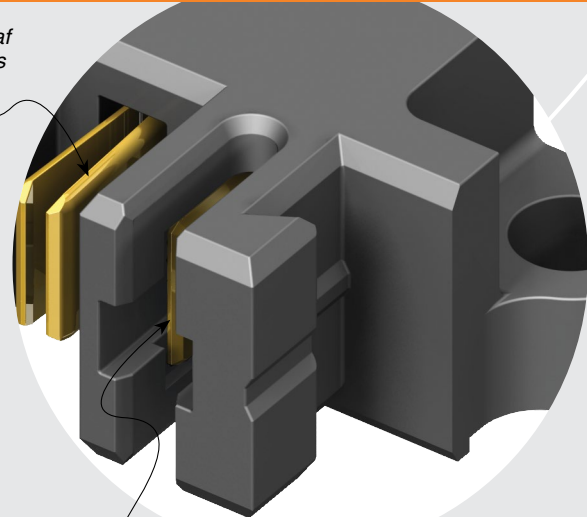
### CREEPAGE AND CLEARANCE



Selectively loading contacts achieves customer specific creepage and clearance requirements.

Contact [asp@samtec.com](mailto:asp@samtec.com)

Dual leaf contacts



Screw down option

Dual blade post

## RECOGNITIONS

For complete scope of recognitions see [www.samtec.com/quality](http://www.samtec.com/quality)

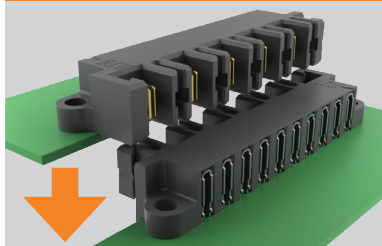


MPPT/MPPT	
POWER PINS	CURRENT RATING (PER CONTACT)
1	23.3 A
2	20.5 A
3	19.4 A
4	18.4 A
10	17.2 A

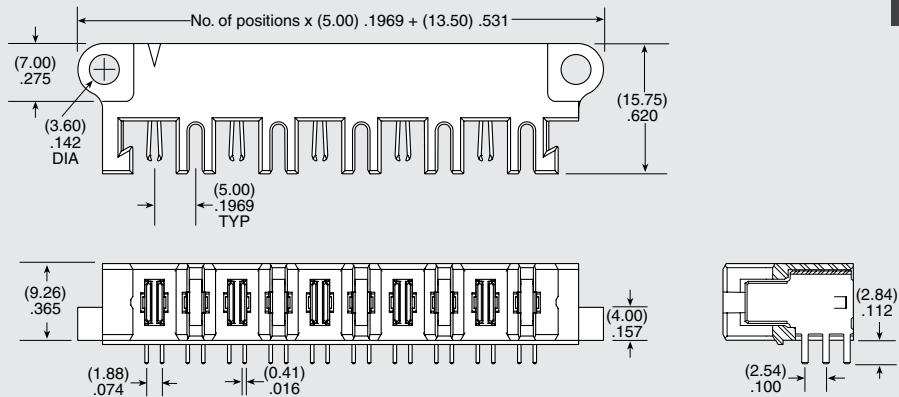
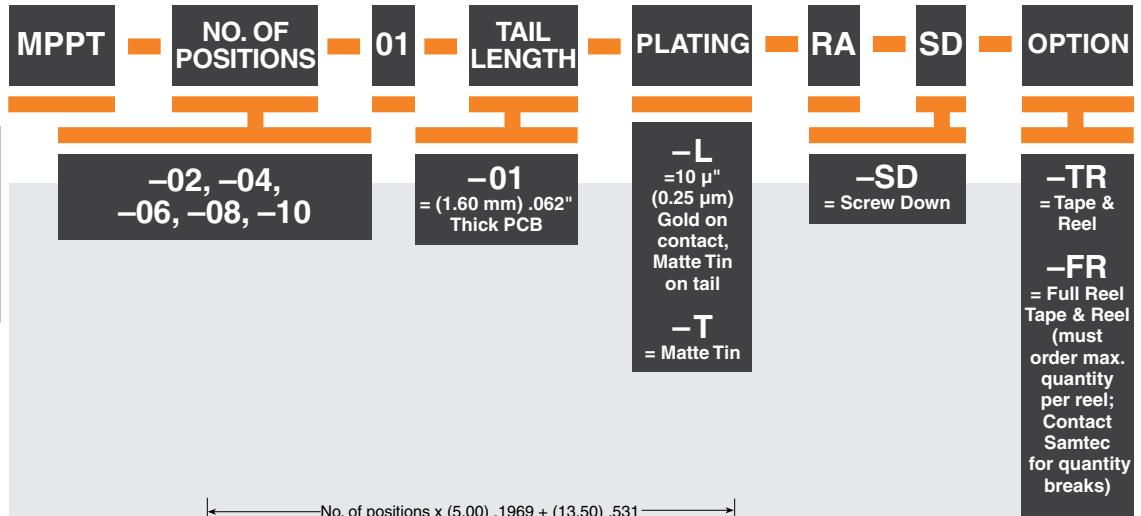
### ALSO AVAILABLE (MOQ Required)

- Locking Clip (Manual placement required)
- Solder Leads for (2.36 mm) .093" thick board

## APPLICATION



**Note:** Some sizes, styles and options are non-standard, non-returnable.



# Mouser Electronics

Authorized Distributor

Click to View Pricing, Inventory, Delivery & Lifecycle Information:

## Samtec:

[MPPT-04-01-01-L-RA-SD](#) [MPPT-08-01-01-L-RA-SD](#) [MPPT-10-01-02-T-RA-SD](#) [MPPT-02-01-01-L-RA-SD-TR](#) [MPPT-04-01-01-L-RA-SD-TR](#) [MPPT-04-01-01-T-RA-SD](#) [MPPT-08-01-02-L-RA-SD](#) [MPPT-08-01-02-T-RA-SD](#) [MPPT-10-01-01-L-RA-SD](#) [MPPT-10-01-01-L-RA-SD-TR](#) [MPPT-06-01-01-T-RA-SD](#) [MPPT-08-01-01-T-RA-SD](#) [MPPT-06-01-01-L-RA-SD](#) [MPPT-02-01-01-L-RA-SD](#) [MPPT-06-01-01-L-RA-SD-TR](#) [MPPT-08-01-01-L-RA-SD-TR](#) [MPPT-02-01-01-T-RA-SD](#) [MPPT-08-01-02-L-RA-SD-TR](#) [MPPT-10-01-02-L-RA-SD](#) [MPPT-04-01-02-T-RA-SD](#)