

## X4 Series

Super robust, Hall-sensed coded switch with optional push button function

### Features

- 12 or 24 positions, with selectable end stop
- 1.5 to 20 Ncm switching torque
- Up to 100k switching cycles
- Absolute code with analog and PWM outputs, or encoder output
- Optional push button function
- 2.7 to 5.5 VDC operating voltage
- -30 to +85°C operation, with optional IP68 sealing

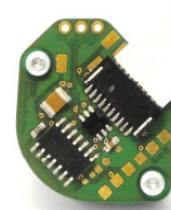
### Possible Customization

- Shaft styles
- Indexing feel
- Connectors, cabling and pinning
- Operating voltage; up to 32 VDC
- Interfacing; i.e. asynchronous, SPI, I<sup>2</sup>C or CAN

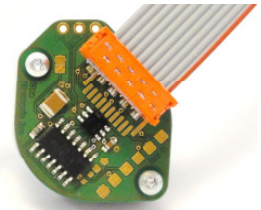
### Applications

- Construction site and transportation controls
- Tool machines and defense applications
- Medical controls

MIL-STD-202G  
MIL-STD-810F  
RoHS (2002/95/EC)

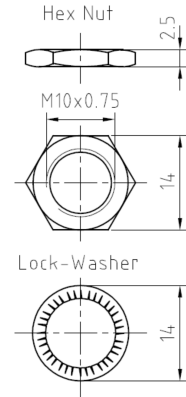
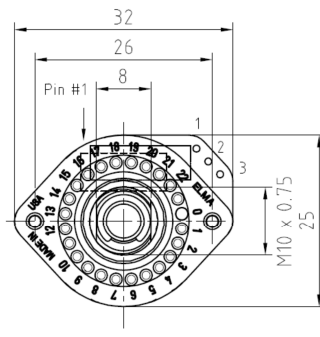
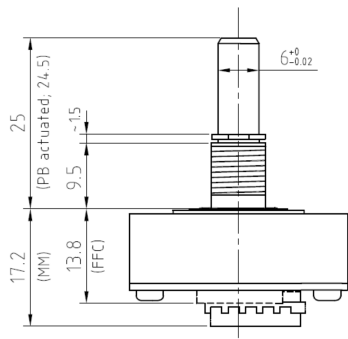


With FFC connector

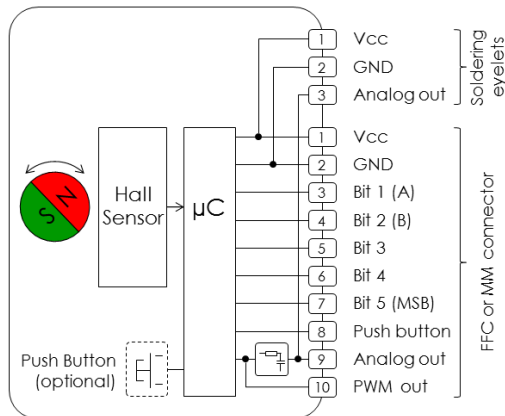


With MicroMaTch connector

### Dimensions (mm)



### Circuitry and Pin Allocation



### Absolute Code Output (Gray)

		Positions																							
		1	2	3	4	5	6	7	8	9	10	11	12	13	14	15	16	17	18	19	20	21	22	23	24
Bits	1		■	■							■	■			■	■			■	■			■	■	
	2			■	■						■	■			■	■			■	■			■	■	
	3				■	■					■	■			■	■			■	■			■	■	
	4					■	■				■	■			■	■			■	■			■	■	
	5						■	■			■	■			■	■			■	■			■	■	

### Encoder Output

