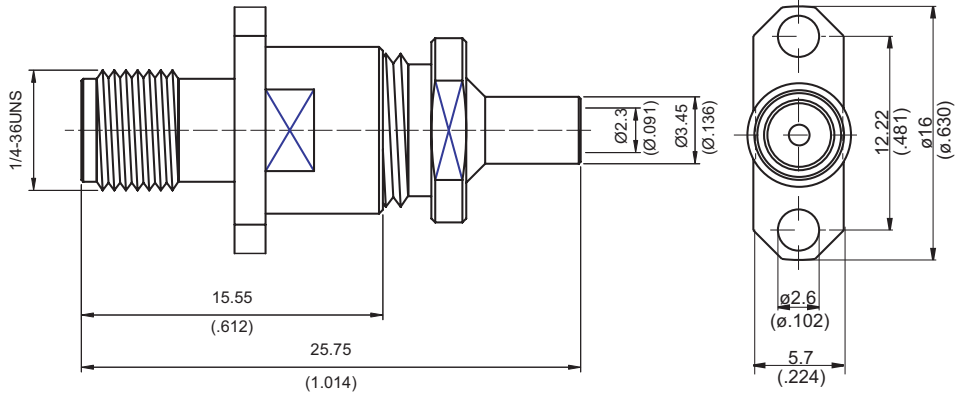
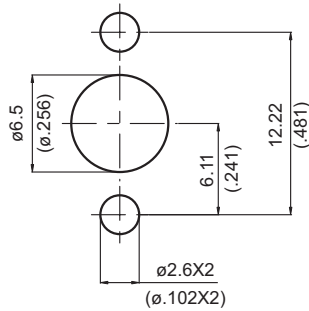


K8326-0085

K Jack Solder Clamp For Panel Receptacle 50Ω



MOUNTING HOLE:



Parts	Material	Plating (Micro-inch)
Nut	Stainless Steel	Passivated
Solder Type	Brass	Gold 5 over Nickel 50 over Copper 50
Ferrule	Stainless Steel	Passivated
Contact Pin	Beryllium Copper	Gold 20 over Nickel 50 over Copper 50
Insulator	P.P	
Body	Stainless Steel	Passivated

Weight:

Suitable Cables: Semi-rigid.0085

This part number complies with RoHS.

Notice: JYEBAO reserves the right to make modifications deemed appropriate.

CABLE ASSEMBLY INSTRUCTION

K8326-0085

JYE BAO CO., LTD.

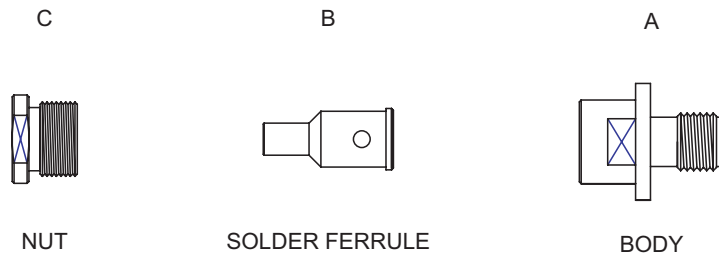


DIAGRAM	ASSEMBLY INSTRUCTION
<p>Diagram showing the preparation of the cable tip. The tip length is 2 [0.079] units. The tip is sharpened.</p>	<p>Step 1: STRIP AS SHOWN . Step 2: SHARPEN CENTER CONDUCTOR TIP.</p>
<p>Diagram showing the solder ferrule "B" being inserted into the cable tip.</p>	<p>Step 3: PUT SOLDER FERRULE " B " IN PLACE .</p>
<p>Diagram showing the cable assembly being inserted into a soldering fixture "ST-008", tool "ST-009", and locator tool "ST-011". The soldering point is labeled "Y".</p>	<p>Step 4: INSERT PREPARED CABLE INTO SOLDERING FIXTURE " ST-008 ", INSERT TOOL " ST-009 " AND LOCATOR TOOL " ST-011 " TO FIX THE CONNECTOR. SOLDER IN " Y " .</p>
<p>Diagram showing the nut "C" being slid into place over the cable assembly.</p>	<p>Step 5: SLIDE NUT " C " IN PLACE .</p>
<p>Diagram showing the solder ferrule "B" being slid into the connector body "A".</p>	<p>Step 6: SLIDE SOLDER FERRULE " B " INTO THE CONNECTOR BODY "A" .</p>
<p>Diagram showing the final assembly with the nut "C" tightened on the connector body "A".</p>	<p>Step 7: FINALLY SCREW NUT " C " ON THE CONNECTOR BODY "A" .</p>

This part number complies with RoHS.

Notice: JYEBAO reserves the right to make modifications deemed appropriate.