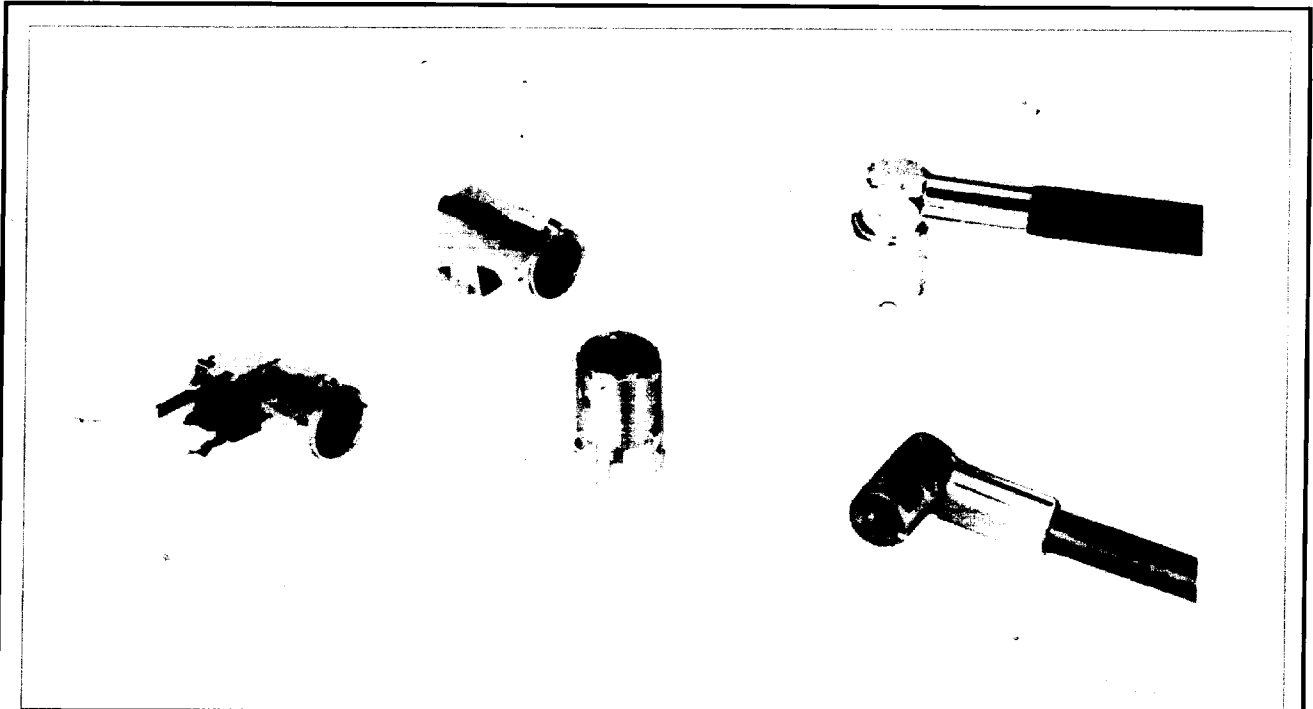


LPC Series



Ultra Miniature, Low-profile Coaxial Connectors



■ FEATURES

- LPC series are push-on semi-lock type coaxial cable connector produced for minimization of communication equipment.
- Low-profile type and height from print base is less than 10mm(.394) when fitted-on.

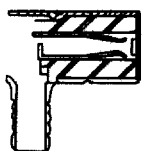
■ SPECIFICATION

Impedance.....50Ω
 Dielectric withstanding ...AC250V(r.m.s.)
 voltage 1 minute
 Insulation resistance1000MΩ min.
 at 250V DC
 Contact resistance10mΩ max.
 at 1A DC
 VSWR.....1.2max. 1.5GHz

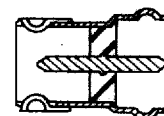
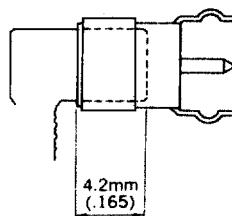
■ MATERIAL/FINISH

Plugs :
 Shell(Body)Brass/Silver plate
 ContactBeryllium copper/Gold plate
 InsulatorTeflon
 Receptacle :
 Shell(Body)Brass/Silver plate
 ContactBrass/Gold plate
 InsulatorPolyetherimide resin

■ Mating Dimension



Plug Mating Face



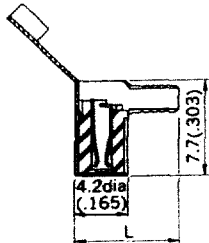
Jack Mating Face

LPC Series



Plugs

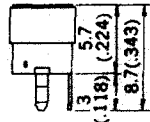
Unit:mm(inch)



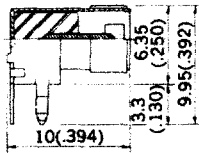
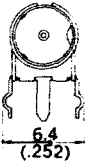
| Name | Part no. | Applicable Cable | Dimensions |
|----------------|----------|------------------|----------------|
| | | | L |
| LPC-LP-0.8DQEW | 95003 | 0.8D-QEW | 8.33 (.328) |
| LPC-LP-1.5DQEW | 95002 | 1.5D-QEW | 8.2 (.323) |

Note : As for plug connectors, connection work be entrusted to our company to assure the function after connection.

Receptacles



| Name | Part no. |
|-----------|----------|
| LPC-SR-PC | 95000 |



| Name | Part no. |
|-----------|----------|
| LPC-LR-PC | 95001 |

• Mounting hole

