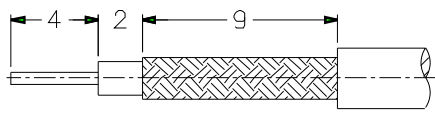
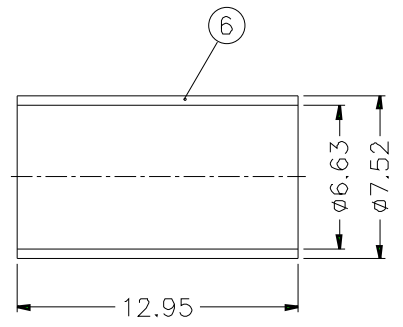
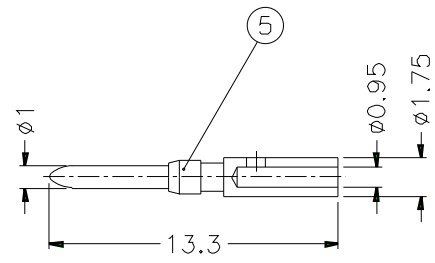
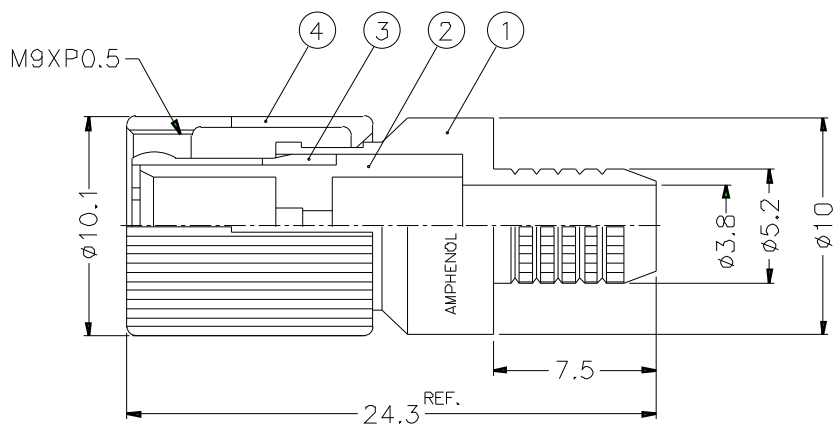


1	2		3	4	5	6	7	8
REVISIONS								
ISS	ZONE	DESCRIPTION\PER REQUEST\DATE						



CABLES: - L910/12  
 - L910/13  
 - SIRTI 214

RECOMMENDED  
 CABLE STRIPPING DIM'S



- FERRULE CRIMPING TOOLS P/N  
 227-944 (M22520/5.01)  
 227-1221-19A (M22520/5.19) HEX: 6.47 L=10.16
- INNER CONTACT CRIMPING TOOL P/N  
 413 SP 00 ADJUST TO 6
- CONNECTOR ACCORDING TO NF C 93-570, DIN 47-295, CEI 169-13
- PACKAGING IN BAG WITH COMMERCIAL PART NUMBER AND DATE CODE

					DIMENSIONS ARE IN MILLIMETERS				PART NO. 156 929 03		<h1>Amphenol</h1>		
6	FERRULE	COPPER	NICKEL	1					APPROVED	DATE			TITLE
5	CONTACT PIN	BRASS	GOLD	1					10-11-01'	1.6/5.6 75Ω STRAIGHT PLUG, CRIMP TYPE			
4	SHELL	BRASS	NICKEL	1					CHECKED	DATE			DRAWING NO.
3	OUTER CONTACT	BRONZE	GOLD	1					10-11-01'	ITEM NO.			
2	INSULATOR	TEFLON	NATURAL	1					DRAWN	DATE			
1	BODY	BRASS	NICKEL	1					10-11-01'				
NO.	DESCRIPTION	MATERIAL	FINISH	Q'TY	DRAWING NO.	SCALE	3/1	ISSUE	A	FILE NO.			