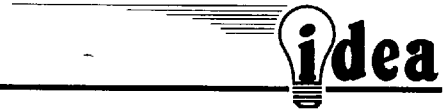


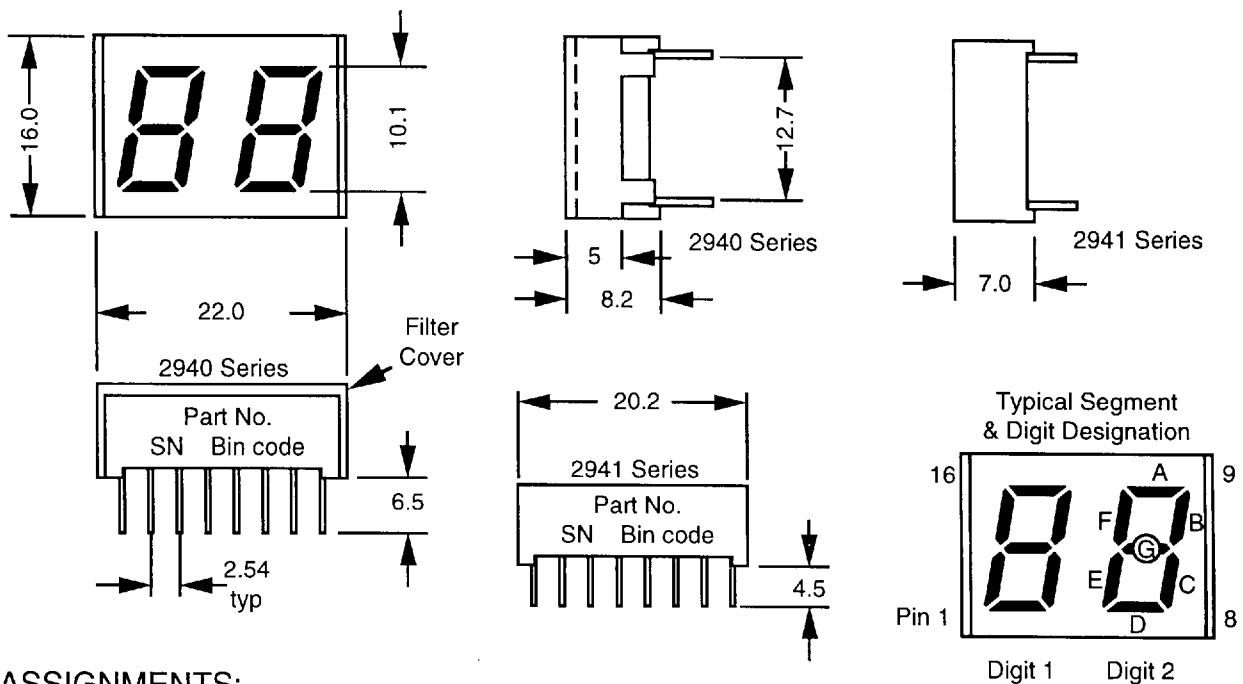
0.4-inch (10.0 mm) Double Digit LED Display H-A2940, H-C2940, H-A2941 and H-C2941 Series



A two-digit display saves labor during assembly and is usually a little cheaper than two single digit units. In multiplex drive these units can also save the number of holes required in the PCB. Alignment of the digits is inherent, thereby appearance is also improved. The 2940 series is supplied with a clip-on filter for contrast enhancement.

SELECTION GUIDE:

Color	E Red	H Red	D Red	Green	Yellow
Wavelength	635 nm	697 nm	660 nm	565 nm	585 nm
Iv (mcd/segment)	4.0	1.4	12.0	5.0	4.0
Common Anode	HEA2940	HHA2940	HDA2940	HGA2940	HYA2940
Common Cathode	HEC2940	HHC2940	HDC2940	HGC2940	HYC2940
Common Anode	HEA2941	HHA2941	HDA2941	HGA2941	HYA2941
Common Cathode	HEC2941	HHC2941	HDC2941	HGC2941	HYC2941



PIN ASSIGNMENTS:

PIN NO.	H-A2940 & H-A2941	H-C2940 & H-C2941
1	- C1	+ C1
2	- E1	+ E1
3	- D1	+ D1
4	C. Anode 1	C. Cathode 1
5	C. Anode 2	C. Cathode 2
6	- D2	+ D2
7	- E2	+ E2
8	- C2	+ C2
9	- G2	+ G2
10	- A2	+ A2
11	- F2	+ F2
12	- B2	+ B2
13	- B1	+ B1
14	- F1	+ F1
15	- A1	+ A1
16	- G1	+ G1

* Specifications subject to change without notice. All dimensions are in mm±0.3 unless stated otherwise.

* Iv typ. measured @ If = 20 mA. All pins are 0.5 mmØ or 0.5 x 0.25 mm.