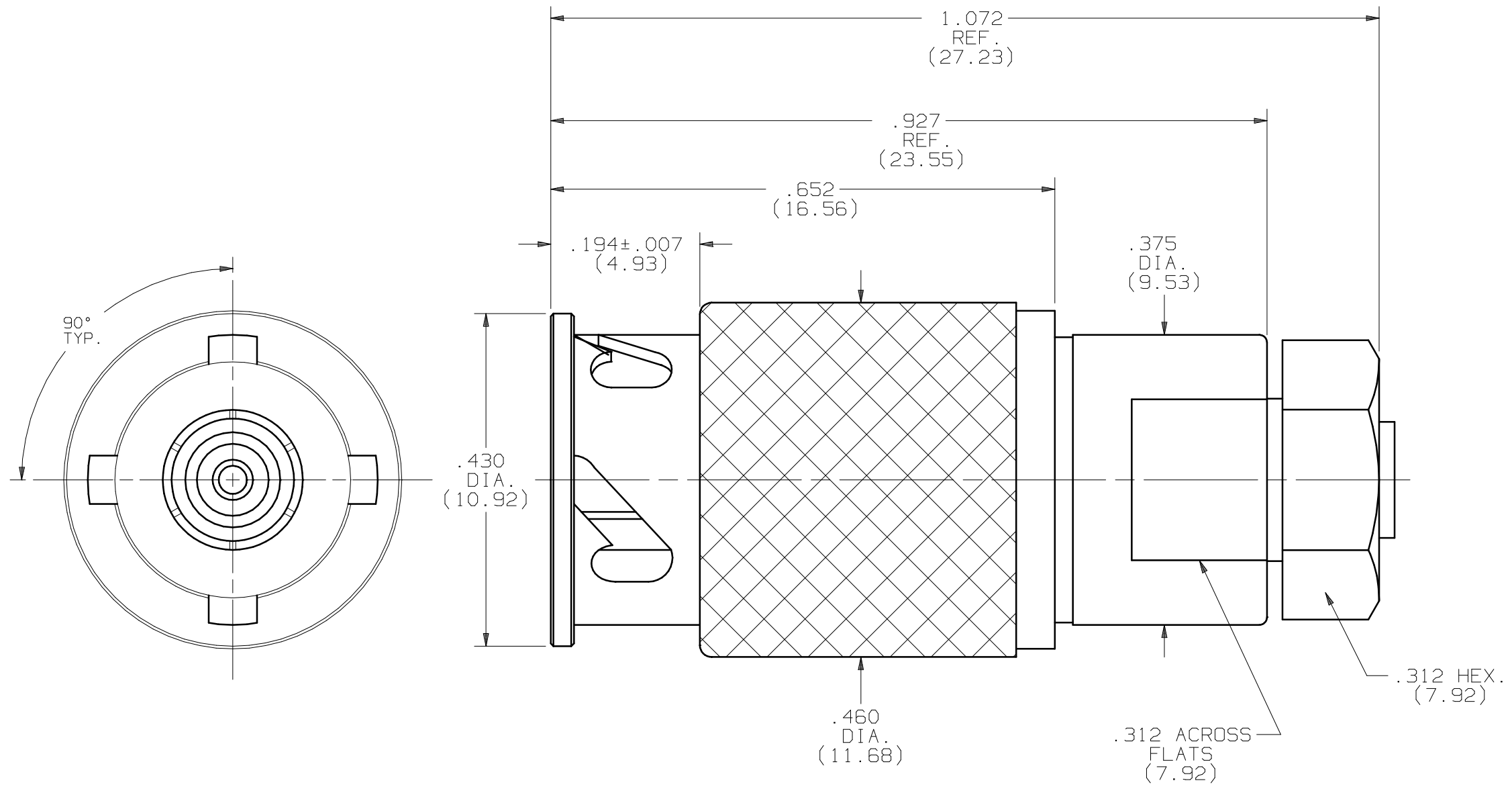


# PRODUCT DATA DRAWING

|                             |                               |                                |
|-----------------------------|-------------------------------|--------------------------------|
| CAD<br>GENERATED<br>DRAWING | DCN<br>CONTROLLED<br>DOCUMENT | DWG. NO.<br><b>SF8707-6121</b> |
|-----------------------------|-------------------------------|--------------------------------|



### MATERIAL:

BODY,  
WASHERS,  
FERRULE,  
CLAMP NUT &  
COUPLING NUT: STAINLESS STEEL PER AMS-5640,  
UNS S30300 (TYPE 1), COND. A

INSULATOR: TEFLON PER ASTM-D-1710.

CONTACTS &  
LOCK RING: BERYLLIUM COPPER PER ASTM-B196  
COND. TD04, ALLOY UNS-C17300

SPRING: 17-7 PH STAINLESS STEEL

GASKETS: RUBBER (VITON) PER MIL-R-83248  
TYPE II, CLASS 1.

GASKET: SILICONE RUBBER PER ZZ-R-765,  
CLASS IIB, GRADE 50/60.

### FINISH:

BODY,  
SPRING,  
WASHERS,  
CLAMP NUT &  
COUPLING NUT: PASSIVATE PER QQ-P-35, TYPE II

CONTACTS &  
FERRULE: GOLD PER MIL-G-45204, TYPE I,  
GRADE C, CLASS 1 OVER NICKEL  
PER QQ-N-290, CLASS 1

### PERFORMANCE:

IMPEDANCE: 50 OHMS  
FREQ. RANGE: .25 TO 3.0 GHz  
D.W.V.: 1,000 VRMS MIN.  
INSUL. RES.: 5,000 MEGOHMS

|      |                |       |       |   |   |                     |                                  |  |                         |
|------|----------------|-------|-------|---|---|---------------------|----------------------------------|--|-------------------------|
| SYM. | DESCRIPTION    | DATE  | APPR. | UNLESS OTHERWISE SPECIFIED:<br>1) ALL DIMENSIONS ARE AFTER PLATING.<br>2) BREAK CORNERS & EDGES .005 R. MAX.<br>3) CHAM. 1st & LAST THDS.<br>4) SURFACE ROUGHNESS 63 J MIL-STD-10.<br>5) DIAS. ON COMMON CENTERS TO BE<br>CONCENTRIC WITHIN .005 T.I.R.<br>6) REMOVE ALL BURRS. | DIMENSIONS ARE IN INCHES<br>TOLERANCES:         |                     |                                  | <b>SV Microwave, Inc.</b><br>3301 Electronics Way<br>West Palm Beach, FL 33407 |                         |
| -    | REL. DCN 29368 | 01/03 | STW   |   | DECIMALS<br>.X ±.030<br>.XX ±.015<br>.XXX ±.005 | FRACTIONAL<br>±1/64 | ANGULAR<br>X° ±1°0'<br>X°X' ±15' |  |                         |
|      |                |       |       | DRAWN: MEB 01/10/03   | MATERIAL: SEE ABOVE                             | □" AREA:<br>N/A     |                                  | TITLE:<br>ZMA PLUG (90° TYP.)<br>FOR HP120 SEMFLEX<br>CABLE                    |                         |
|      |                |       |       | CHECKED: STW 01/10/03   | FINISH: SEE ABOVE                               | SIZE                | CAGE NO.                         |  | SCALE                   |
|      |                |       |       | APPROVED: STW 01/10/03  | B   | 95077               | 6X                               |  | DWG. NO.<br>SF8707-6121 |