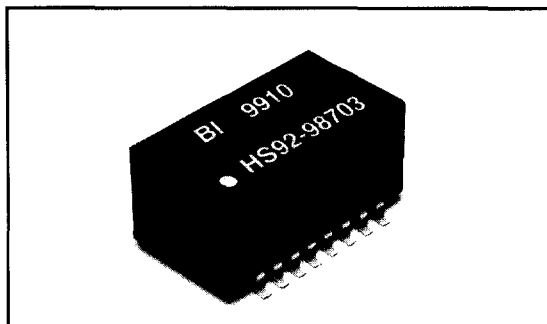


# MODEL HS92 SERIES

## 10Base-T and Ethernet AUI

### Isolation Transformer

NEW PRODUCT



#### FEATURES AND BENEFITS

- Meets IEEE 802.3 10Base-T specifications
- Designed for adapter cards, MAUs, HUBs and motherboard applications
- *Common mode chokes for EMI suppression*
- Surface mount design compatible with vapor phase and IR reflow soldering process

#### ELECTRICAL @ 25°C

Part Number	Turns Ratio Transmit/Receive ±5%	Sine Wave	Leakage	Interwinding	DCR Ω Max.	Isolation V rms	Primary Pins
		Inductance OCL (1) μH Min.	Inductance L <sub>L</sub> (1) μH Max.	Capacitance C <sub>ww</sub> (1) pF Max.			
HS92-98702	1:1	90	0.2	10	0.3	2000	1-2, 4-5 & 7-8
HS92-98703	1 ct:2 ct & 1 ct:1 ct	140	0.1	12	0.6	2000	6-8 & 1-3

#### ENVIRONMENTAL

Operating Temperature Range

0°C to +70°C

#### MECHANICAL

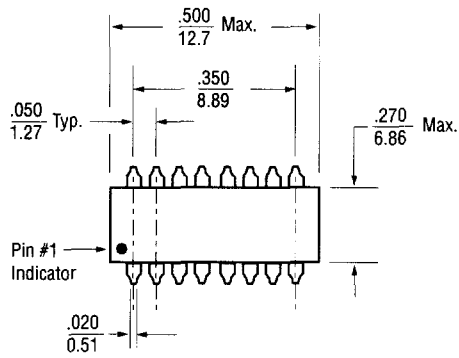
Lead Plating	85/15 Tin Lead
Lead Material	Copper Alloy 42
Lead Configuration	Gull Wing
Lead Coplanarity	0.004" (0.102mm)
Case Material, UL-94V-0 Rated	Molded Epoxy

Specifications subject to change without notice.

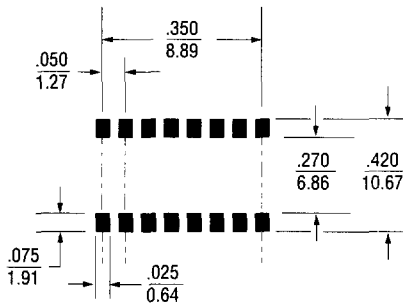
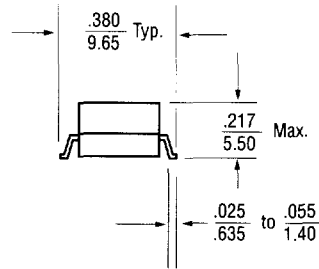
Note: (1) OCL, C<sub>ww</sub> and L<sub>L</sub> are measured at 100 kHz, 20 mV rms.

6

**OUTLINE DIMENSIONS (Inch/mm)**



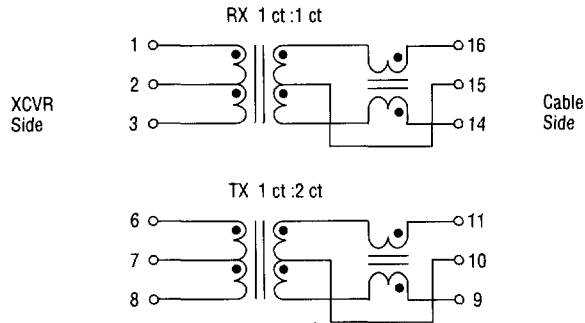
**Recommended Pad Layout**



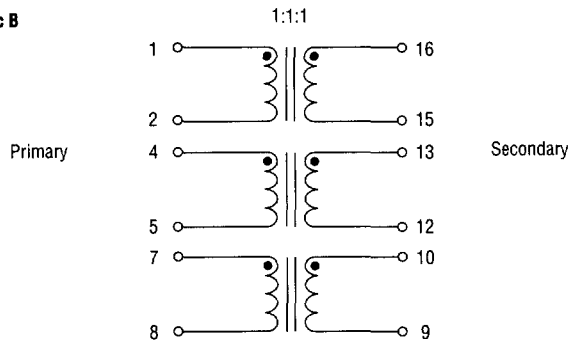
Tolerances unless otherwise specified  $\pm 0.005"$  (.127mm).

**SCHEMATICS**

**Model HS92-98703 - Schematic A**



**Model HS92-98702 - Schematic B**



**PACKAGING**

<b>Standard:</b>	Tubes
Magazine	Capacity = 38 Units
<b>Option:</b>	Tape & Reel
Reel	Diameter = 13"(330mm)
	Capacity = 850 Units

**ORDERING INFORMATION**

