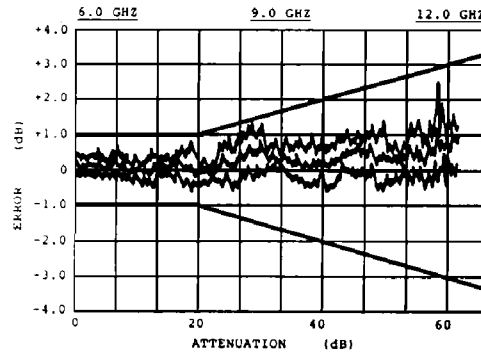
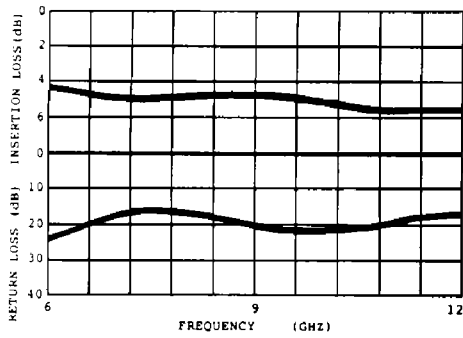


Typical Performance

ML 6685-603D



Outline Drawing

Third Angle Projection

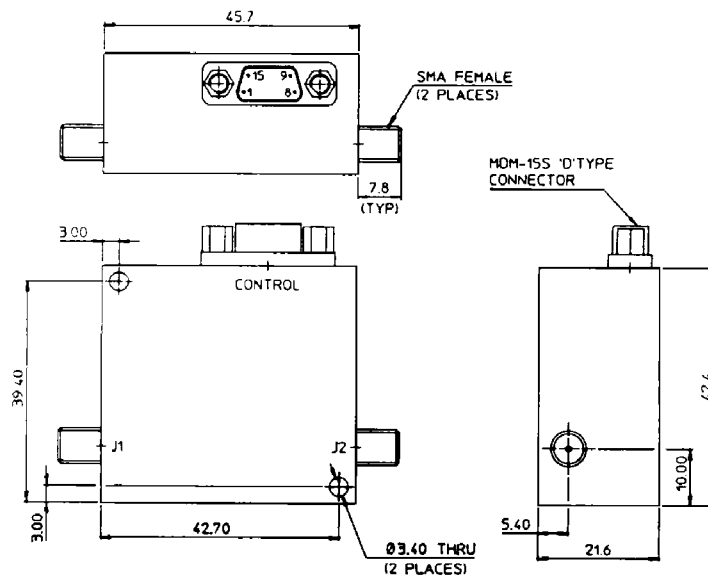
All dimensions in mm

Tolerances X.X = ±0.5mm
X.XX = ±0.2mm

Standard Finish: Matt black paint to DTD 5555A

D Connector Pin Out

- 1,2,3,4,9,10, no connection
- 5 TTL 6 (MSB)
- 6 TTL 4
- 7 TTL 2
- 8 +5V
- 11 Ground
- 12 -15V
- 13 TTL 5
- 14 TTL 3
- 15 TTL 1 (LSB)



NOTES:

- 1) J1 is RF input, J2 is RF output
- 2) The device is absorptive on both input and output.
- 3) Power supplies required +5V @ 250mA maximum, -15V @ 100mA maximum.
- 4) Control input is 6 bit binary TTL. For each bit TTL '0' selects low loss state TTL '1' selects attenuation state.
- 5) TTL logic '0' is 0 to 0.8V, TTL logic '1' is 2.0 to 5.5V.
- 6) Maximum RF input power +23dBm
- 7) Any combination of SMA male/female connectors is available, please contact the factory.
- 8) Transition time is defined as 10% to 90% detected RF.
- 9) Switching speed is defined as 50% TTL to 90% detected RF.
- 10) Case operating temperature -55°C to +85°C
Storage temperature -55°C to +125°C.
- 11) Attenuation accuracy specification includes variation with frequency and temperature and setting accuracy. Accuracy is specified in both dB and as a percentage, for any attenuation setting the higher of these figures will apply as the maximum specification.

This data sheet gives an introduction to the range of switched pad attenuators available from M/A-COM. An extensive library of devices backed by in-house design and engineering support is available to meet specialised customer requirements, please contact the factory for applications assistance.

Specifications Subject to Change Without Notice.