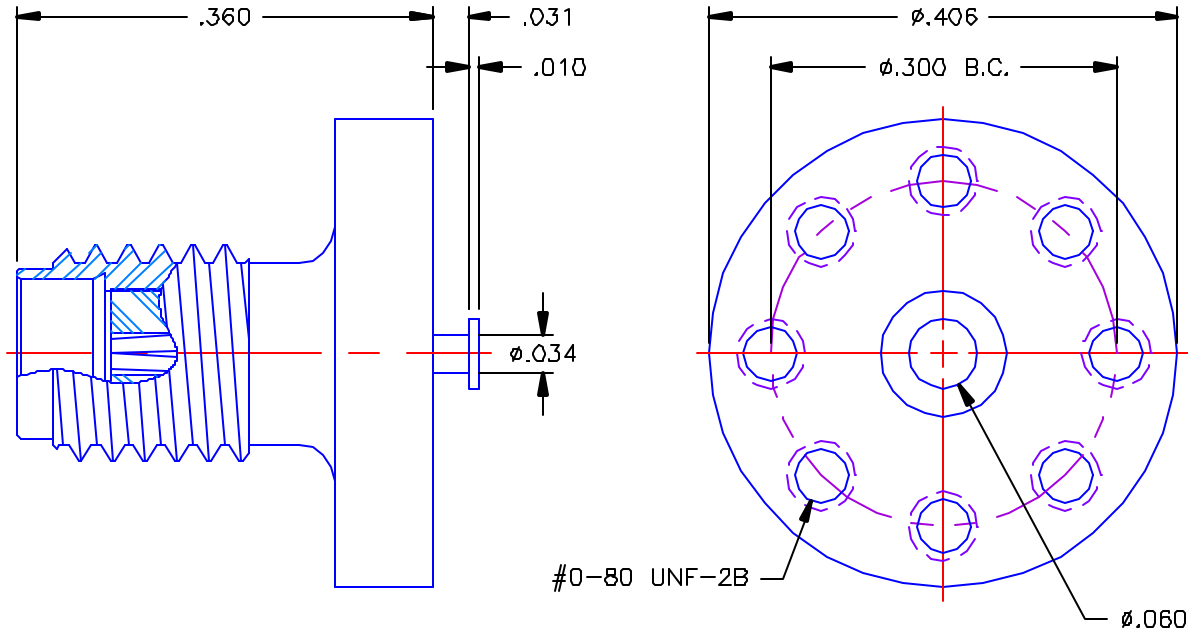


REVISIONS			
REV	DESCRIPTION	DATE	APPROVED
-	INITIAL RELEASE	03/17/04	A.D.M.



**PROPRIETARY INFORMATION**  
**NOT TO BE RELEASED**  
**WITHOUT WRITTEN PERMISSION**  
**FROM AN AUTHORIZED**  
**REPRESENTATIVE OF**  
**APPLIED ENGINEERING PRODUCTS**


**NOTES:**

**MATERIALS:**

1. BODY = STAINLESS STEEL PER ASTM A582, ALLOY 303, CONDITION "A".
2. INSULATOR = VIRGIN WHITE TEFLON PER ASTM D1710, GRADE 1, TYPE I, CLASS "B".
3. CONTACT = BERYLLIUM COPPER PER ASTM B196, ALLOY C17300, TEMPER TD04

**FINISHES:**

1. BODY = GOLD PLATE PER MIL-G-45204, TYPE II, CLASS Q, GRADE C, OVER .000050 TO .00010 STRESS FREE NICKEL PER QQ-N-290.
2. CONTACT = GOLD PLATE PER MIL-G-45204, TYPE II, CLASS 1, GRADE C, OVER .00010 TO .00020 STRESS FREE SULFAMATE NICKEL PER QQ-N-290

UNLESS OTHERWISE SPECIFIED DIMENSIONS ARE IN INCHES TOLERANCES ON	DWN. A.D.M.	DATE 03/16/04		APPLIED ENGINEERING PRODUCTS		
	CHKD: D.N.	DATE 03/17/04		104 John W. Murphy Dr. New Haven, CT 06513		
DECIMAL	ANGLE	APVD: D.J.C.	DATE 03/17/04	SSMA STRAIGHT JACK SURFACE MOUNT STRIPLINE RECEPTACLE		
REFERENCE:	MATERIALS & FINISHES: SEE NOTES		SIZE A	FSCM NO 19505	DWG. NO. 9775-1213-001	REV -
ORIGINATOR: A.D.M. DATE: 03/16/04			SCALE 6:1			SHEET 1 OF 1

9775-1213-001