

**Ceramic Trap Filters**  
**“CERAP®”**

Type: **BF/ W/composite/3F/CT**

Ceramic Filter, “CERAP®” is useful in a sound trap circuit of a TV receiver whereby the sound i-f signal can be successfully eliminated the video signal. “CERAP®” promises to make the circuit simple and adjustment-free.

■ **Features**

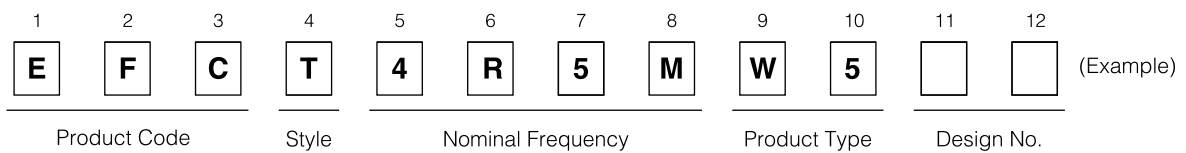
- Conventional LC filters can be replaced
- Contributes to circuit simplification because of its adjustment-free
- Low insertion loss
- Excellent spurious suppression characteristics in video frequency range
- Wide bandwidth can be achieved with inductors

■ **Recommended Applications**

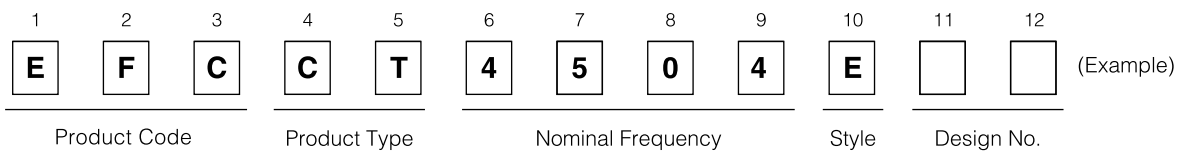
- Sound trap filter for TV and VTR
- Chroma trap filter for TV and VTR

■ **Explanation of Part Numbers**

**BF/W/Composite/3F Type**



**CT Type**



Design, Specifications are subject to change without notice. Ask factory for technical specifications before purchase and/or use. Whenever a doubt about safety arises from this product, please inform us immediately for technical consultation without fail.

① Type BF, 2-Terminals Type "CERAP<sup>®</sup>"

■ Ratings and Characteristics

Part No.		Nominal Frequency* (F <sub>0</sub> )	Center Frequency (f <sub>0</sub> )	Attenuation at f <sub>0</sub>	Spurious Response
Bulk Pack	Taping				
EFGA3584BF	EFCT3584BF	3.58 MHz	3.58 MHz ±0.5 %	20 dB min.	Below 3.58 MHz: 2 dB max.
EFGA4434BF	EFCT4434BF	4.43 MHz	4.43 MHz ±0.5 %	20 dB min.	Below 4.43 MHz: 2 dB max.
EFGA4504BF	EFCT4504BF	4.5 MHz	4.5 MHz ±0.5 %	20 dB min.	Below 4.5 MHz: 2 dB max. 3.58 MHz ±250 kHz: 1 dB max.
EFGA5504BF	EFCT5504BF	5.5 MHz	5.5 MHz ±0.5 %	20 dB min.	Below 5.5 MHz: 2 dB max. 4.43 MHz ±250 kHz: 1 dB max.
EFGA6004BF	EFCT6004BF	6.0 MHz	6.0 MHz ±0.5 %	20 dB min.	Below 6.0 MHz: 2 dB max. 4.43 MHz ±250 kHz: 1 dB max.
EFGA6504BF	EFCT6504BF	6.5 MHz	6.5 MHz ±0.5 %	20 dB min.	Below 6.5 MHz: 2 dB max. 4.43 MHz ±250 kHz: 1 dB max.

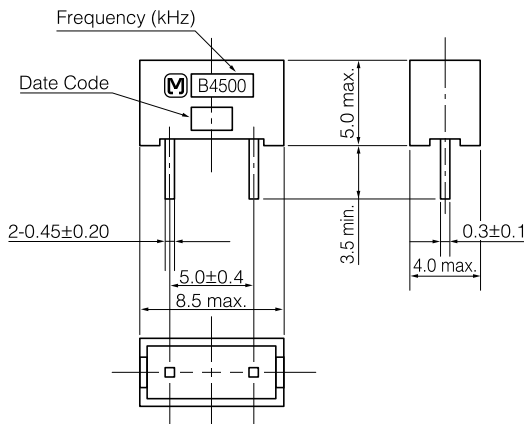
● Operating Temperature Range: -20 to 60 °C

\* Other frequencies are available between 3.58 to 7 MHz upon special order.

■ Dimensions in mm (not to scale)

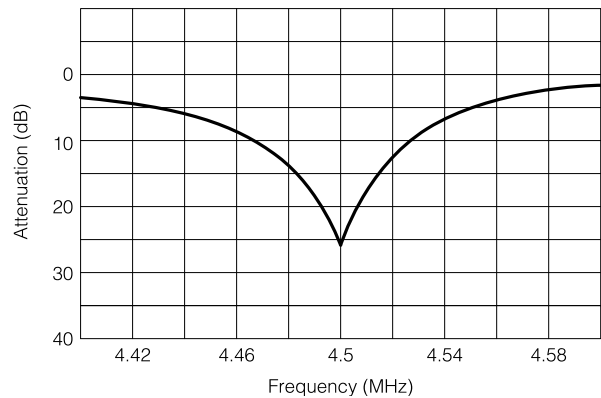
● Bulk Pack

EFGA□□□□BF

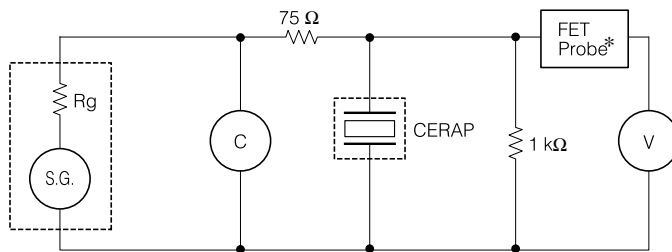


■ Typical Characteristics

[EFGA4504BF]



■ Test Circuit Diagram

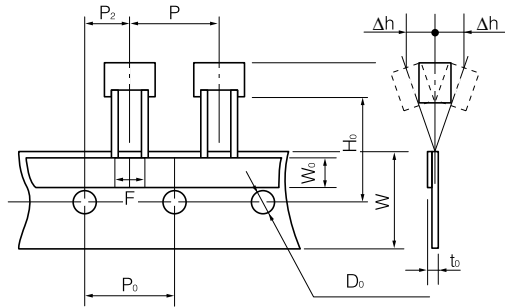


C : Frequency counter  
S.G. : Signal generator  
V : Voltmeter

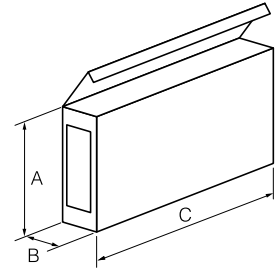
\*10 MΩ min. and 2 pF max.

Design, Specifications are subject to change without notice. Ask factory for technical specifications before purchase and/or use. Whenever a doubt about safety arises from this product, please inform us immediately for technical consultation without fail.

### ■ Dimensions for Taping in mm (not to scale)



Dimensions	
P	12.7±1.0
P <sub>0</sub>	12.7±0.3
P <sub>2</sub>	6.35±1.30
H <sub>0</sub>	18.50±0.75
F	5.0±0.8
Δh	2.0 max.
W	18.0±1.0
W <sub>0</sub>	6.0 min.
D <sub>0</sub>	φ4.0±0.2
t <sub>0</sub>	1.5 max.



Dimensions*	
A	160–170
B	40–45
C	330

\* Tolerance: ±3 mm

● Packing Quantity: 1000 pcs./box

### ② Type W, 3-Terminals Type “CERAP®”

#### ■ Ratings and Characteristics

Part No.		Nominal Frequency* (F <sub>0</sub> )	Attenuation at Nominal Frequency	Attenuation at Nominal Frequency ±30 kHz	Spurious Response
Bulk Pack	Taping				
EFCS4R5MW5	EFCT4R5MW5	4.5 MHz	30 dB min.	17 dB min.	Below 4.5 MHz: 1 dB max.
EFCS5R5MW5	EFCT5R5MW5	5.5 MHz	30 dB min.	17 dB min.	Below 5.5 MHz: 1 dB max.
EFCS6R0MW5	EFCT6R0MW5	6.0 MHz	30 dB min.	17 dB min.	Below 6.0 MHz: 1 dB max.
EFCS6R5MW5	EFCT6R5MW5	6.5 MHz	30 dB min.	17 dB min.	Below 6.5 MHz: 1 dB max.

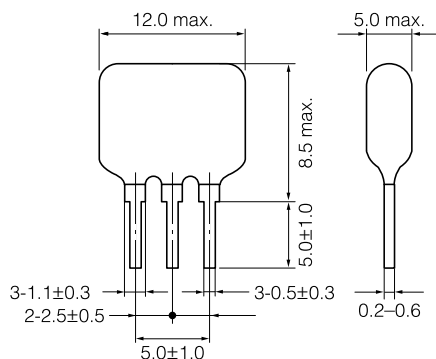
● Operating Temperature Range: -20 to 60 °C

\* Other combination of 3-different frequencies ratings are available between 3.58 to 7 MHz upon special order.

#### ■ Dimensions in mm (not to scale)

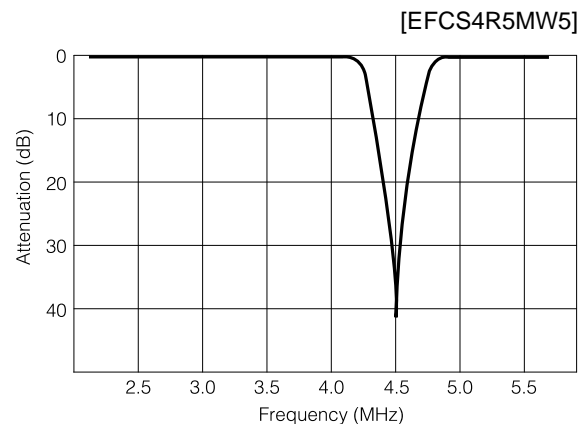
● Bulk Pack

EFCS□□□MW5



● Packing Quantity: 4000 pcs./box

#### ■ Typical Characteristics



### ③ Composite Type “CERAP®”

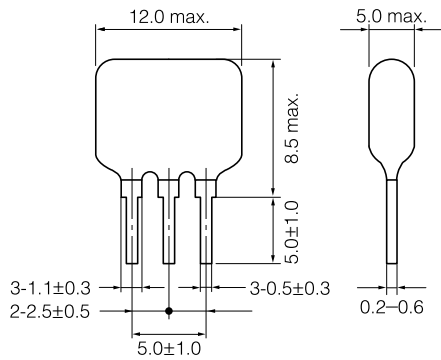
#### ■ Ratings and Characteristics

Part No.		Nominal Frequency* (F <sub>□</sub> )	Attenuation at F <sub>□</sub>		Band Width (-30 dB)
Bulk Pack	Taping		(F <sub>1</sub> )	(F <sub>2</sub> )	
EFCS5M7MW5	EFCT5M7MW5	(F <sub>1</sub> ) 5.5 MHz (F <sub>2</sub> ) 5.74 MHz	30 dB min.	30 dB min.	70 kHz min.
EFCS5M6MW5	EFCT5M6MW5	(F <sub>1</sub> ) 5.5 MHz (F <sub>2</sub> ) 6.0 MHz	30 dB min.	30 dB min.	70 kHz min.
EFCS5M65MW5	EFCT5M65MW5	(F <sub>1</sub> ) 5.5 MHz (F <sub>2</sub> ) 6.5 MHz	30 dB min.	30 dB min.	70 kHz min.
EFCS6M65MW5	EFCT6M65MW5	(F <sub>1</sub> ) 6.0 MHz (F <sub>2</sub> ) 6.5 MHz	30 dB min.	30 dB min.	70 kHz min.

● Operating Temperature Range: -20 to 60 °C

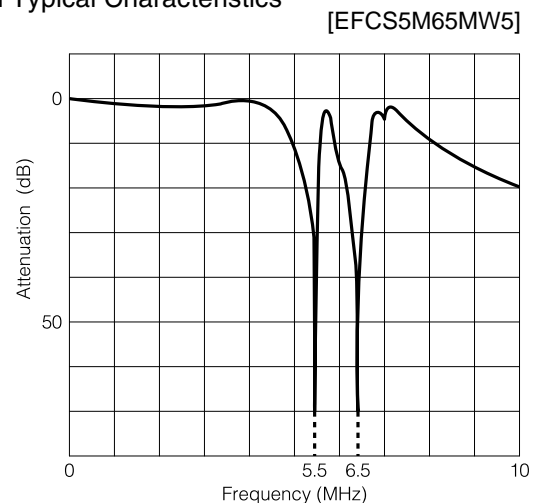
\* Other frequencies are available between 3.58 to 7 MHz upon special order.

#### ■ Dimensions in mm (not to scale)



● Packing Quantity: 4000 pcs./box

#### ■ Typical Characteristics



### ④ Type 3F, Built-In 3 Trap-filters

#### ■ Ratings and Characteristics

Part No.		Nominal Frequency* (F <sub>□</sub> )	Attenuation at F <sub>0</sub>	Attenuation at F <sub>□</sub> ± 30 kHz	Band Width (-30 dB)
Bulk Pack	Taping				
EFCS3F01W5	EFCT3F01W5	(F <sub>1</sub> ) 5.5 MHz (F <sub>2</sub> ) 5.74 MHz (F <sub>3</sub> ) 6.5 MHz	30 dB min.	20 dB min.	70 kHz min.
EFCS3F02W5	EFCT3F02W5	(F <sub>1</sub> ) 5.5 MHz (F <sub>2</sub> ) 6.0 MHz (F <sub>3</sub> ) 6.5 MHz	30 dB min.	20 dB min.	70 kHz min.

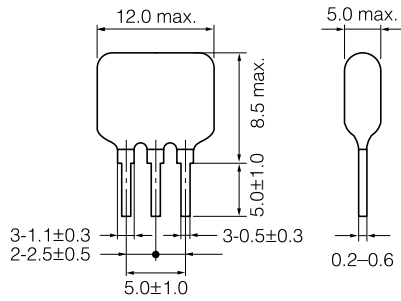
● Operating Temperature Range: -20 to 60 °C

\* Other combination of 3-different frequencies ratings are available between 3.58 to 7 MHz upon special order.

■ Dimensions in mm (not to scale)

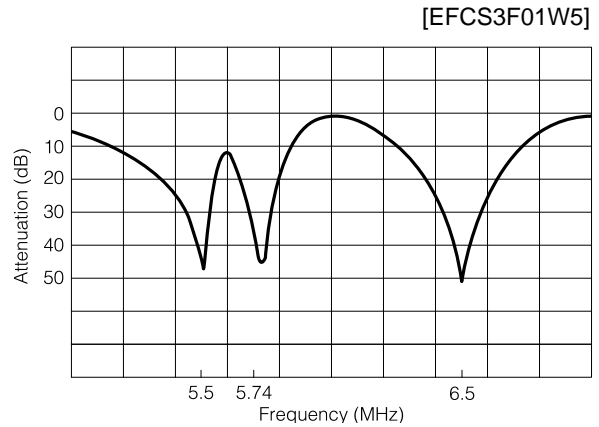
- Bulk Pack

EFCS3F□□W5



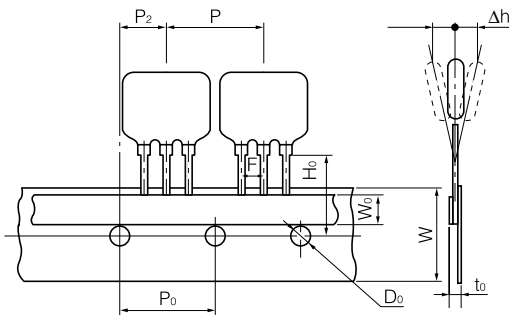
- Packing Quantity: 4000 pcs./box

■ Typical Characteristics



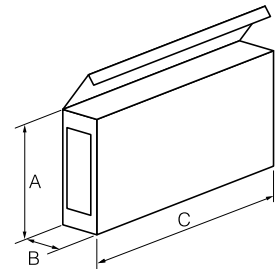
■ Dimensions in mm (not to scale)

- Taping
- Type W, Composite Type and Type 3F



- Packing Quantity: 1000 pcs./box

Dimensions	
P	12.7±1.0
P <sub>0</sub>	12.7±0.3
P <sub>2</sub>	6.35±1.30
H <sub>0</sub>	18.50±0.75
F	2.5±0.8
Δh	2.0 max.
W	18.0±1.0
W <sub>0</sub>	6.0 min.
D <sub>0</sub>	φ4.0±0.2
t <sub>0</sub>	1.5 max.



Dimensions*	
A	160-170
B	40-45
C	330

\* Tolerance: ±3 mm

⑤ Chip Type Type CT

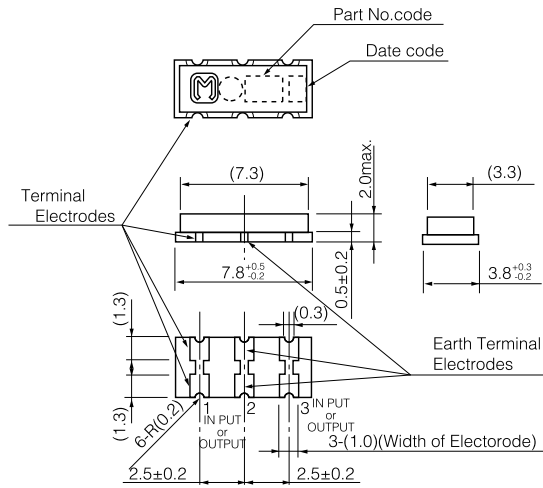
■ Ratings and Characteristics

Part No.		Nominal Frequency* (F <sub>0</sub> )	Attenuation at Nominal Frequency	Attenuation at Nominal Frequency±30 kHz	Spurious Response
Bulk Pack	Taping				
EFCCT4504B	EFCCT4504E	4.5 MHz	30 dB min.	17 dB min.	Below 4.5 MHz: 1 dB max.
EFCCT5504B	EFCCT5504E	5.5 MHz	30 dB min.	17 dB min.	Below 5.5 MHz: 1 dB max.
EFCCT6004B	EFCCT6004E	6.0 MHz	30 dB min.	17 dB min.	Below 6.0 MHz: 1 dB max.
EFCCT6504B	EFCCT6504E	6.5 MHz	30 dB min.	17 dB min.	Below 6.5 MHz: 1 dB max.

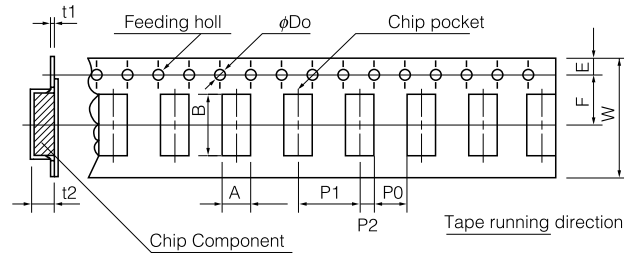
- Operating Temperature Range: -20 to 60 °C

\* Other combination of 3-different frequencies ratings are available between 3.58 to 7 MHz upon special order.

### ■ Dimensions in mm (not to scale) Bulk Pack



### ● Emboss Taping



Dim.	W	F	E	P <sub>1</sub>	P <sub>2</sub>	P <sub>0</sub>
(mm)	16.0±0.3	7.5±0.1	1.75±0.01	8.0±0.1	2.0±0.1	4.0±0.1

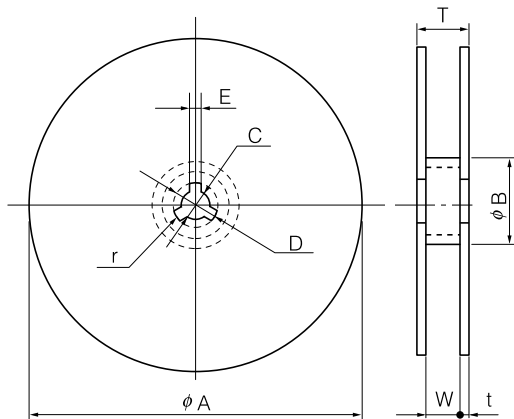
Dim.	D <sub>0</sub>	t <sub>1</sub>	t <sub>2</sub>	A	B
(mm)	φ1.5 <sup>+0.1</sup> / <sub>0</sub>	0.6max.	3.0max.	4.3±0.2	8.7±0.2

### ■ Packaging Specifications Supplied in bulk or taped & reel packing style

#### ● Standard packing Quantity

Embossed Taping	Bulk
2500pcs./reel	500pcs./bag

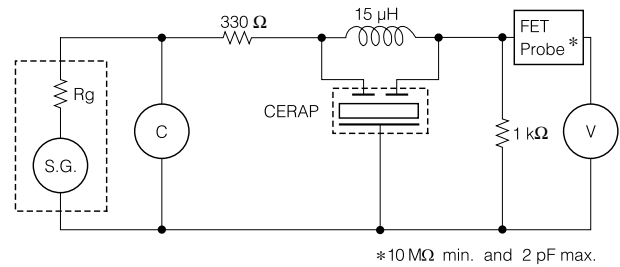
### ■ Dimensions for Reel in mm (not to scale)



Dim.	φA	φB	C	D	E
(mm)	330	80 min.	13.0±0.5	21.0±0.8	2.0±0.5

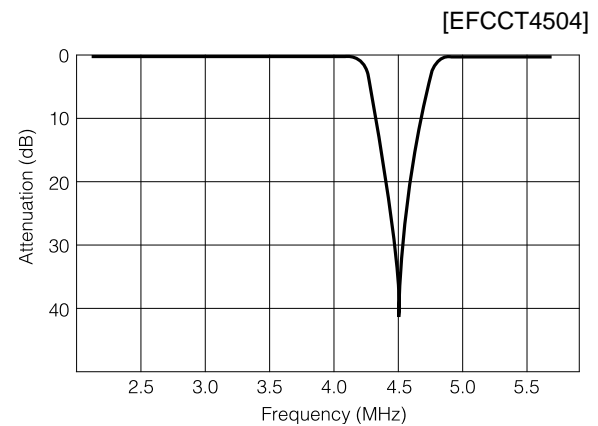
Dim.	W	T	t	r
(mm)	16.4 <sup>+2.0</sup> / <sub>0</sub>	22.4max.	3 max.	1.0

### ■ Test Circuit Diagram



C : Frequency counter  
S.G. : Signal generator  
V. : Voltmeter

### ■ Typical Characteristics



Design, Specifications are subject to change without notice. Ask factory for technical specifications before purchase and/or use. Whenever a doubt about safety arises from this product, please inform us immediately for technical consultation without fail.