



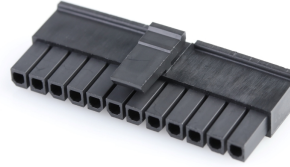
Part Number : [436451200](#)

Product Description : Micro-Fit 3.0 Receptacle Housing, Single Row, 12 Circuits, UL 94V-0, Black

Series Number : 43645

Status : Active

Product Category : Connector Housings



Documents & Resources

Drawings

[Drawing 436451200_sd.pdf](#)

3D Models and Design Files

[3D Model PDF 436451200.pdf](#)

[3D Model 436451200_stp.zip](#)

Specifications

[Application Specification 430250000-AS-000.pdf](#)

[Packaging Specification PK-43645-001-001.pdf](#)

[Product Specification 436500001-PS-JA-000.pdf](#)

[Product Specification 436500001-PS-KO-000.pdf](#)

[Product Specification 436500001-PS-SP-000.pdf](#)

[Product Specification PS-43650-001.pdf](#)

[Test Summary 430450005-TS-000.pdf](#)


[Test Summary TS-43045-001-001.pdf](#)

[Test Summary TS-43045-002-001.pdf](#)

[Test Summary TS-46235-001-001.pdf](#)

Product Environment Compliance

Compliance

| | |
|--------------------|---|
| GADSL/IMDS | Not Relevant |
| China RoHS |  |
| EU ELV | Not Relevant |
| Low-Halogen Status | Not Low-Halogen per IEC 61249-2-21 |
| REACH SVHC | Not Contained per D(2023)3788-DC (14 Jun 2023) |
| EU RoHS | Compliant per EU 2015/863 |

Multiple Part Product Compliance Statements

- Eu RoHS
- REACH SVHC
- Low-Halogen

Multiple Part Industry Compliance Documents

- IPC 1752A Class C
- IPC 1752A Class D
- Molex Product Compliance Declaration
- IEC-62474
- chemSHERPA (xml)

EU RoHS Certificate of Compliance

Part Details

General

| | |
|----------------|--|
| Status | Active |
| Category | Connector Housings |
| Series | 43645 |
| Description | Micro-Fit 3.0 Receptacle Housing, Single Row, 12 Circuits, UL 94V-0, Black |
| Application | Power, Wire-to-Board, Wire-to-Wire |
| Product Family | Micro-Fit Connector System |
| Product Name | Micro-Fit 3.0 |
| UPC | 800754538152 |

Agency

| | |
|-----|---------|
| CSA | LR19980 |
| UL | E29179 |

Physical

| | |
|-----------------------|------------|
| Circuits (maximum) | 12 |
| Color - Resin | Black |
| Flammability | 94V-0 |
| Gender | Receptacle |
| Glow-Wire Capable | No |
| Keying to Mating Part | None |
| Lock to Mating Part | Yes |

| | |
|-------------------------------|----------------|
| Material - Resin | Polyester |
| Net Weight | 1.480/g |
| Number of Rows | 1 |
| Packaging Type | Bag |
| Panel Mount | No |
| Pitch - Mating Interface | 3.00mm |
| Polarized to Mating Part | Yes |
| Stackable | No |
| Temperature Range - Operating | -40° to +105°C |

Mates With / Use With

Mates with Part(s)

| Description | Part Number |
|--|-------------------------------|
| Micro-Fit 3.0 Single Row Plug Housings | <u>43640</u> |
| Micro-Fit TPA Single Row Plug Housings | <u>200875</u> |
| Micro-Fit 3.0 Single Row Headers | <u>43650</u> |

Use with Part(s)

| Description | Part Number |
|--|--|
| Pre-Crimped Lead Micro-Fit 3.0 Female-to-Micro-Fit 3.0 Female, Tin (Sn) Plating, 150.00mm Length, 20 AWG, Black | <u>/content/molex/molex-dot-com/us/en/products/product-page.html/797580002.html</u> |
| Pre-Crimped Lead Micro-Fit 3.0 Female-to-Micro-Fit 3.0 Female, Gold (Au) Plating, 150.00mm Length, 20 AWG, Black | <u>/content/molex/molex-dot-com/us/en/products/product-page.html/797580004.html</u> |
| Pre-Crimped Lead Micro-Fit 3.0 Female-to-Micro-Fit 3.0 Female, Tin (Sn) Plating, 300.00mm Length, 20 AWG, Black | <u>/content/molex/molex-dot-com/us/en/products/product-page.html/797580010.html</u> |
| Pre-Crimped Lead Micro-Fit 3.0 Female-to-Micro-Fit 3.0 Female, Gold (Au) Plating, 300.00mm Length, 20 AWG, Black | <u>/content/molex/molex-dot-com/us/en/products/product-page.html/797580012.html</u> |
| Micro-Fit 3.0 Female Crimp Terminals | <u>43030</u> |
| Micro-Fit Reduced Mating Force Female Crimp Terminals | <u>46235</u> |

| | |
|--|---------------|
| Pre-Crimped Lead Micro-Fit 3.0 Female-to-Micro-Fit 3.0 Female | <u>214760</u> |
| Pre-Crimped Lead Micro-Fit 3.0 Female-to-Pigtail | <u>214761</u> |

This document was generated on Sep 04, 2023