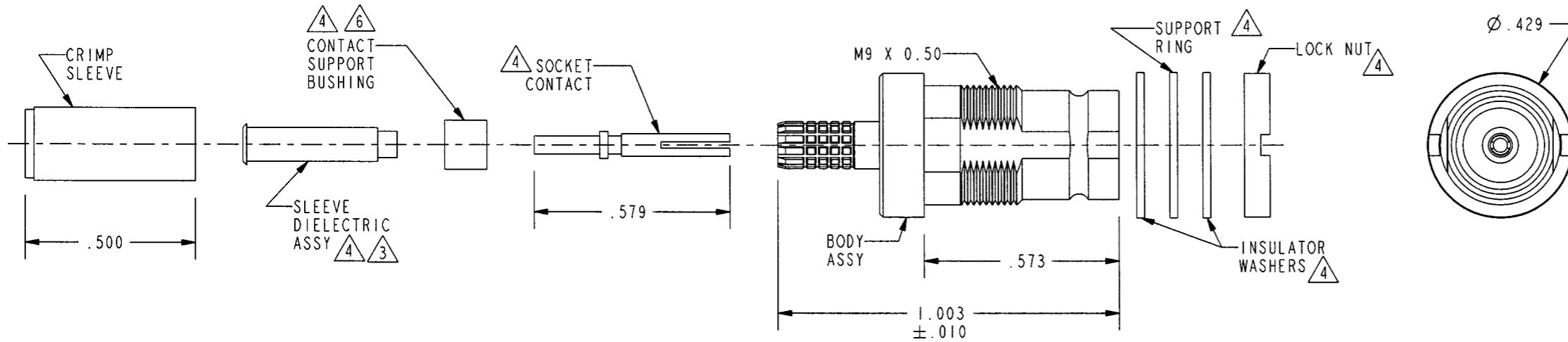
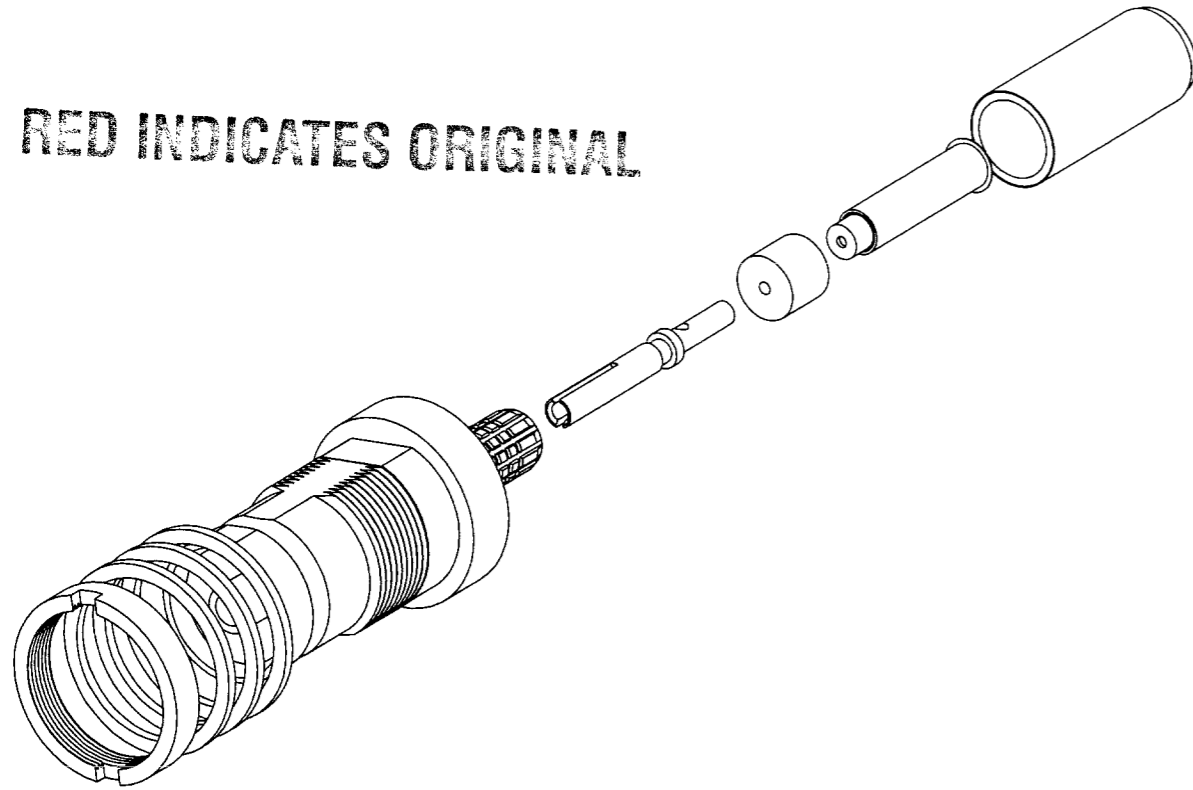


DATA CONTAINED IN THIS DOCUMENT IS PROPRIETARY OF TROMPETER ELECTRONICS INC. AND SHALL NOT BE DISCLOSED, COPIED OR USED FOR PROCUREMENT OR MANUFACTURE WITHOUT EXPRESS WRITTEN PERMISSION.

REVISIONS

REV	DESCRIPTION	DATE	APPROVED
B	REVISED PER ECO # 14703	9-11-02	AM

RED INDICATES ORIGINAL



- △6 CONTACT SUPPORT BUSHING IS REQUIRED ON -013B, -015A, AND -022 ONLY
- 5. RF COAXIAL CONNECTOR, 75Ω, DIN JACK THREADED CONNECTOR. MEETS REQUIREMENTS OF IEC 169-13.
- △4 CRIMP SLEEVE, SLEEVE DIELECTRIC ASSY, CONTACT SUPPORT BUSHING, SOCKET CONTACT, AND HARDWARE ARE SUPPLIED LOOSE
- △3 SLEEVE REQUIRED ON -001 THRU -007 AND -027
- 2. FINISH: CONNECTOR FRONT BODY, TFS-1B (GOLD)
SOCKET CONTACT, TFS-1B (GOLD)
CRIMP SLEEVE AND FERRULE, TFS-1A (NICKEL)
- 1. ALL DIMENSIONS ARE IN INCHES

NOTES: UNLESS OTHERWISE SPECIFIED.

A
HEX



RECOMMENDED
HEX CRIMP

TABLE I

DASH NO.	CABLES ACCOMMODATED	A HEX	ASSEMBLE PER
-001	RG-178, -196	.178	TAI-222
-002	HEWLETT PACKARD 8120-1107	.197	
-003	RG-174, 316	.178	
-004	RG-179, 187		
-005	NORTHERN ELECTRIC DBL-SHLD RG-187	.197	
-006	GC875GPI, GRUMMAN DBL SHLD RG-188		
-007	275-3991, MICRODOT		
-008	RG-195, -180 421-111, ESSEX	.178	
-009	8218, BELDEN YR23023 BELDEN 21-597, ESSEX		
-011	RG-58; RG-141; RG-303; TCC-50-2	.213	
-013	RG-59		
-013A	TCC-75-2	.255	
-013B	RG-62		
-014	8212, BELDEN		
-015	730A, AT	.290	
-015A	RG-71		
-016	724, AT 8281, BELDEN	.324	
-017	RG-6	.344	
-018	9268, BELDEN	.255	
-019	8279, BELDEN	.290	
-020	9248, BELDEN	.213	
-021	88240, BELDEN	.255	
-022	88241, 88269, BELDEN	.290	
-023	89108, BELDEN	.255	
-024	89120, BELDEN	.290	
-025	734A, AT	.178	
-026	735A, ATA		
-027	KS19224L, ATA		
-028	CECBV-75-2	0 CRIMP SEE 105-1468	
-029	BT3002	.178	

INTERPRET DRAWING PER MIL-STD-100. DIMENSIONS ARE IN INCHES AND INCLUDE FINISH THICKNESS UNLESS OTHERWISE SPECIFIED.

TOL: UNLESS SPECIFIED
.XX ± .02
.XXX ± .010
ANGLE ± 1°



DRN	J S	9-4-02
CHK	AAH	9-5-02
QUALITY		9/10/02
MANUF		3/11/02
APPROVED		9/10/02
PROVE FILE NO.		1-0545

MATERIAL	
FINISH	
DO NOT SCALE DWG	

TITLE: UBJ110			
SIZE	CAGE CODE	DRAWING NO.	REV
B	14949	1-0545	B
SCALE	DATE	SHEET 1 OF 2	
3/1			

NEXT ASSY