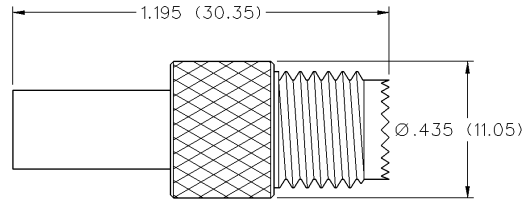
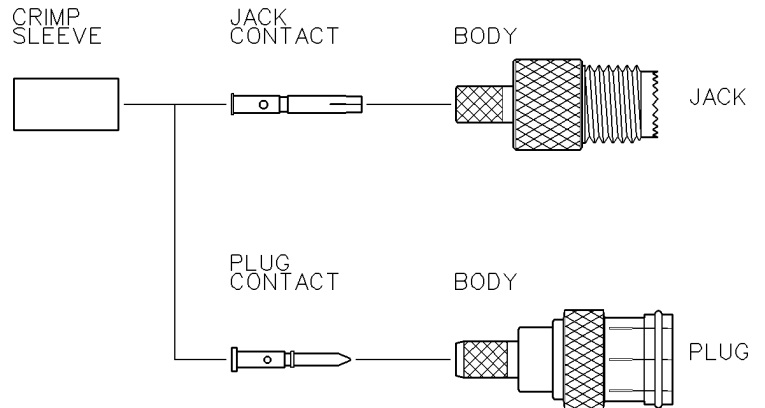
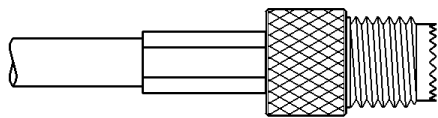
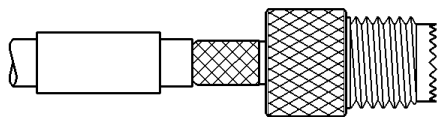
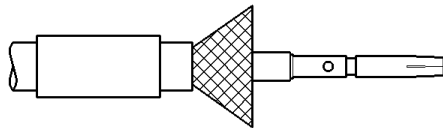
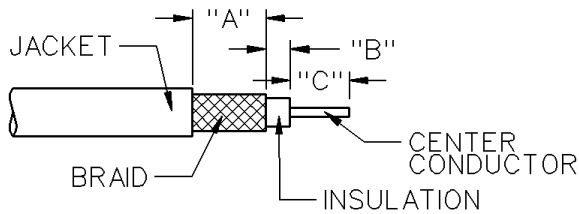


# Mini-UHF Straight Crimp Type Jack - 3 Piece



PART NUMBER	CABLE TYPE	CONTACT I.D.	BODY I.D.	FERRULE I.D.
CP-AD247	RG58	.0325 (0.83)	.185 (4.70)-.205 (5.21)	.213 (5.41)



1. Identify the connector parts. (3 piece parts)
2. Strip the cable to the appropriate dimensions. Do not nick the braid or the center conductor. Make sure that the stranded center conductor is not frayed.
3. Slide the crimp sleeve onto the cable. Solder the contact to the center conductor using the minimum amount of solder necessary for a good joint; make sure that the contact is flush with the insulation of the cable. Flare the braid.
4. Slide the body over the contact and under the braid. Then seat the body firmly onto the contact. (Make sure that the jack contact is flush with the insulation of the body at the interface.)
5. Arrange the braid uniformly around the crimp stem of the body. Slide the crimp sleeve forward and crimp using the recommended crimp hex.

Part Number	Cable	Contact I.D.	Body I.D.	Ferrule I.D.	Strip Dimensions			Crimp Sleeve Hex	Recommended Crimp Tool
					"A"	"B"	"C"		
CP-AD247	RG-58	.0325 (.825)	.185 (4.70)-.205 (5.21)	.213 (5.41)	.300 (7.62)	.100 (2.54)	.240 (6.10)	.213 (5.41)	24-304P

# Mini-UHF Connectors

Specifications



INCHES (MILLIMETERS)  
CUSTOMER DRAWINGS AVAILABLE UPON REQUEST

Mini UHF connectors are low cost, general purpose units designed for low frequency system applications. These commercial quality connectors are equipped with threaded coupling interfaces for secure and reliable connections. The Standard UHF and Mini UHF connectors are not intermateable.

## Specifications\*

### MINI UHF

#### Electrical Characteristics

Impedance: Nonconstant

Frequency range: 0-2 GHz

Working voltage: 500 volts RMS at sea level

Dielectric withstanding voltage: 1500 volts RMS at sea level

Insulation resistance: 5000 megohms minimum

#### Environmental Characteristics

Recommended temperature range: -55°C to +85°C

#### Mechanical Characteristics

Durability: 500 cycles

Cable retention: 20 lbs., RG-58 C/U cable

#### Materials

Body and coupling nut: Zinc or brass

Contact: Brass

Crimp Sleeve: Brass

Insulator: TPX Polymethylpetene

Plating: Body - Nickel

Crimp sleeve - Nickel

Contact - Gold

\* These values are typical and may not apply to all connectors.