

DO-41, TO-92 SIDAC

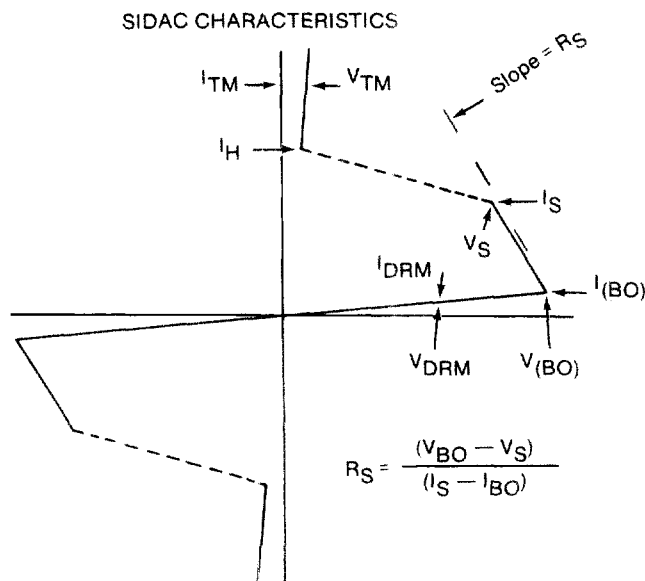
	SYMBOL	Q105*	Q130*	Q230*	Q340*	Q470*	UNIT
Repetitive Peak Off-State Voltage	V_{DRM}	±90	±90	±180	±180	±180	VOLT Min.
Breakover Voltage 60Hz Sine Wave	V_{BO}	95 113	110 125	205 230	220 250	255 280	VOLT Min. Max.
On-State RMS Current Conduction Angle of 360°	$I_T(RMS)$	1.0	1.0	1.0	1.0	1.0	AMP Max.
Peak Surge (Non-Repetitive) On-State Current, One-Cycle, at 60Hz	I_{TSM}	20	20	20	20	20	AMP Typ.
Repetitive Peak Off-State Current 60Hz $V = V_{DRM}$	I_{DRM}	10	10	10	10	10	μA Max.
Dynamic Holding Current 60Hz $R = 0.1K_{OHM}$	I_H	100	100	50	50	50	mA Max.
Peak On-State Voltage $I_T = 1A$	V_{TM}	1.5	1.5	1.5	1.5	1.5	VOLT Max.
Maximum Rate Of Change Of On-State Current	di/dt	150	150	150	150	150	A/μS Typ.
Repetitive Peak On-State Current Pulse width 10μS $f = 1KHz$	I_{TRM}	20	20	20	20	20	AMP Typ.
Switching Resistance 60Hz Sine Wave $V_{BO} - V_S$ $I_S - I_{BO}$	R_S	0.1	0.1	0.1	0.1	0.1	K_{OHM} Min.
Breakover Current 60Hz Sine Wave	I_{BO}	200	200	200	200	200	μA Max.
Thermal Resistance Of Junction To Case	$R_{\theta J-C}$	45	45	45	45	45	°C/W Max.
Junction Temperature	T_J	-40 +125	-40 +125	-40 +125	-40 +125	-40 +125	°C
Storage Temperature	T_{STG}	-65 +150	-65 +150	-65 +150	-65 +150	-65 +150	°C

NOTES:

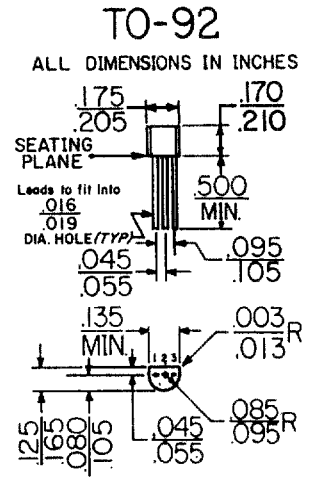
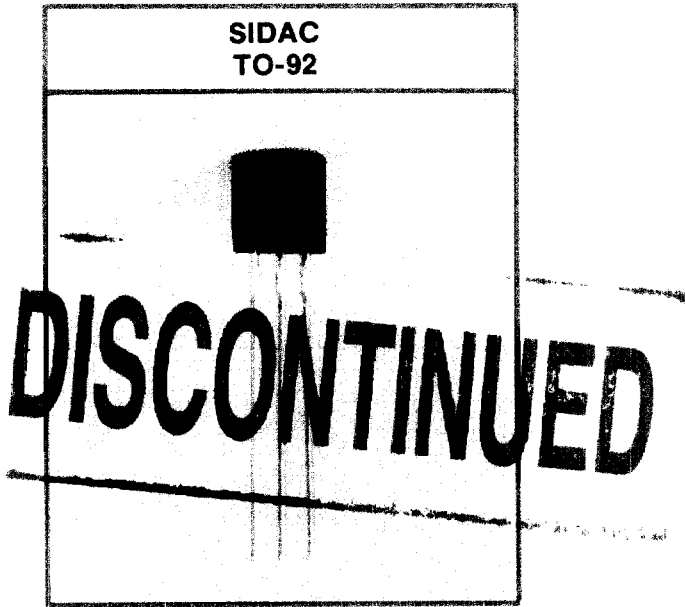
Other Voltages available,
consult factory

*Add Suffix for Package Style desired

- A = TO-92
- B = DO-41



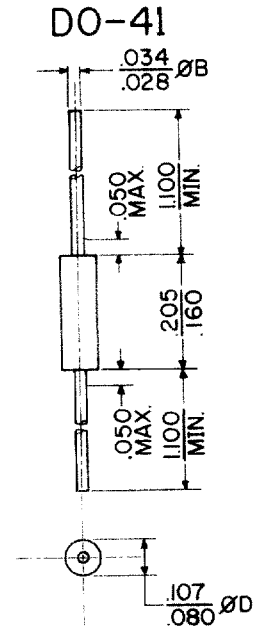
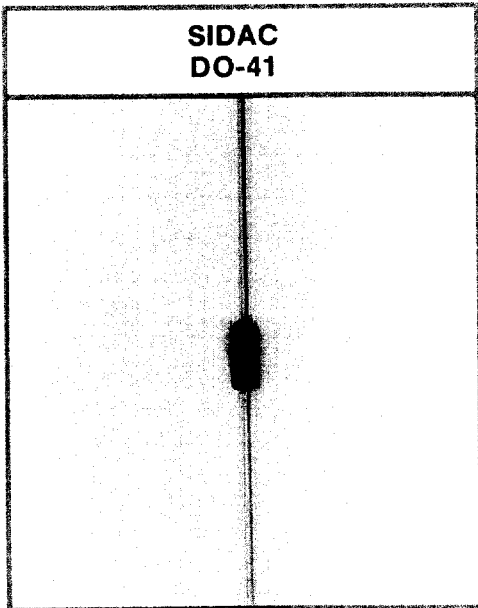
HUTSON INDUSTRIES SIDACS



SIDAC

Pin 1. Main Terminal 1
Pin 2. N.C.*
Pin 3. Main Terminal 2

* no connection



ALL DIMENSIONS IN INCHES