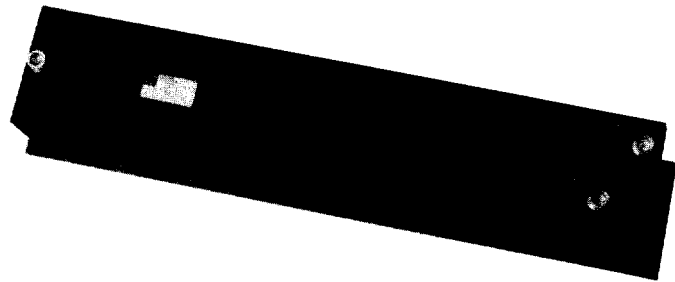


High Power and Standard Cellular Duplexers



RLC Electronics' Cellular Duplexers provide both high isolation and low insertion loss. The absence of magnetic materials, together with strict attention to structure result in low intermodulation. Both high power and standard

duplexers are supplied in a 2U rackmount package. Power ratings of these duplexers assume an operating altitude of 10,000 feet, a base plate temperature of +50°C and an antenna VSWR of 2:1.

Specifications

DP - 1 - 2 - 3

Model No.	Frequency Range (MHz)		Isolation (Min.) RCVR/XMIT	Frequency Range Loss (Max.)		Return Loss	Peak Power (Max.)
	RECEIVE	TRANSMIT		RECEIVE	TRANSMIT		
DP-S	824-849	869-894	75dB	.70dB	.80dB	14dB	400 W
DP-S	872-905	917-950	60dB	1.00dB	1.00dB	14dB	400 W
DP-S	890-915	935-960	75dB	.75dB	.85dB	14dB	400 W
DP-H	824-849	869-894	75dB	1.00dB	1.00dB	14dB	10,000 W
DP-H	890-915	935-960	75dB	1.00dB	1.00dB	14dB	10,000 W

Monitor port (OPTIONAL) coupling S- 40 ±5dB
 H- 50 ±5dB
 (Monitor coupling is not directional)

Impedance: 50 ohms

Connectors: Type 'N' (f)
 Monitor port (OPTIONAL) 'BNC' (f)
 'SMA' (f)
 'N' (f)

To designate the cellular duplexer desired use:

- (1) Duplexer Series S (Standard)
 H (High power)
- (2) Frequency Range: per above (Designate by 'RECEIVE' range)
- (3) Monitor port MB ('BNC' (f))
 MN ('N' (f))
 MS ('SMA' (f))

Example: DP-H-824-849-MB is a high power, 824-849 MHz (receive) 869-894 MHz (transmit), duplexer with a 'BNC' (f) monitor port.

Specials requiring closer tolerances, different frequency ranges, special connectors, different materials, finishes, etc. can be furnished upon request.

ISO 9002 Certified

Specifications subject to change without notice.

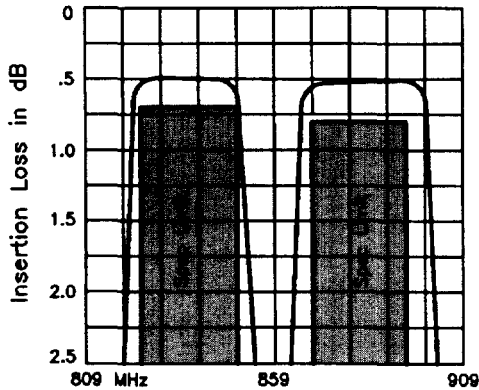
RLC ELECTRONICS, INC.

83 Radio Circle, Mt. Kisco, NY 10549
 (914) 241-1334 • FAX (914) 241-1753
 E-mail: sales@rlcelectronics.com
 www.rlcelectronics.com



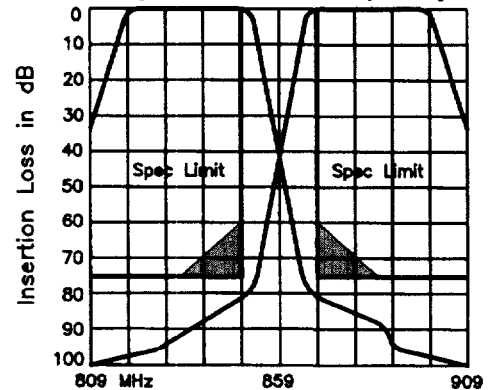
Typical Operating Curves

Insertion Loss Vs. Frequency

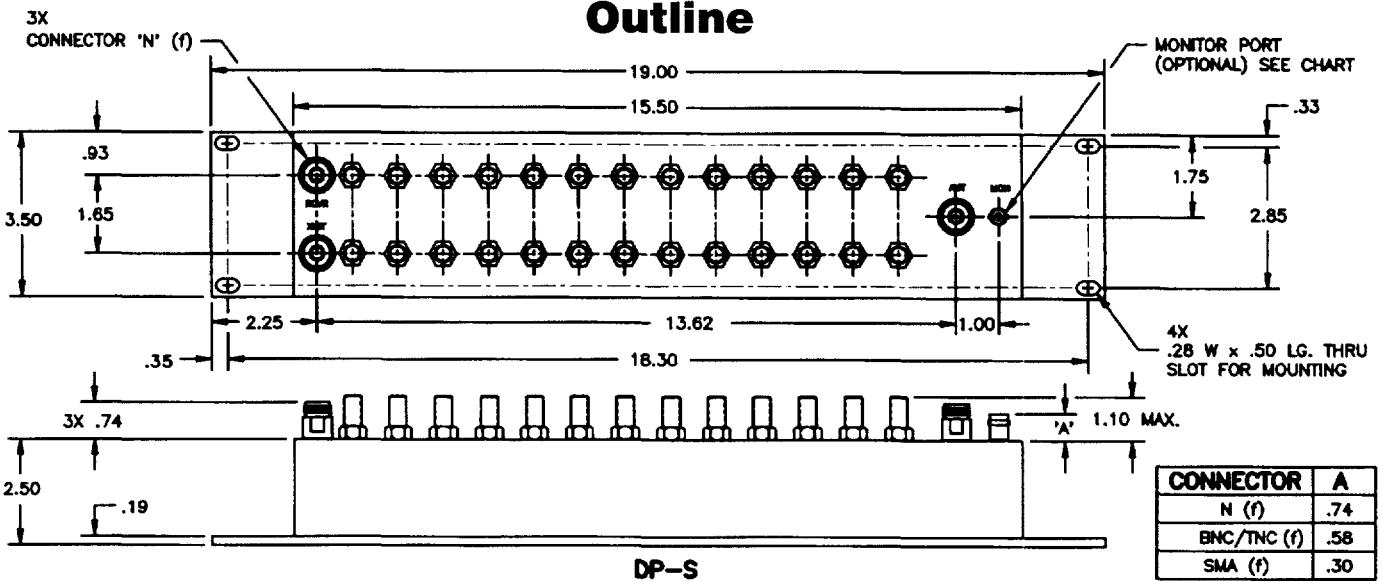


**DP-S-824-849
SHOWN**

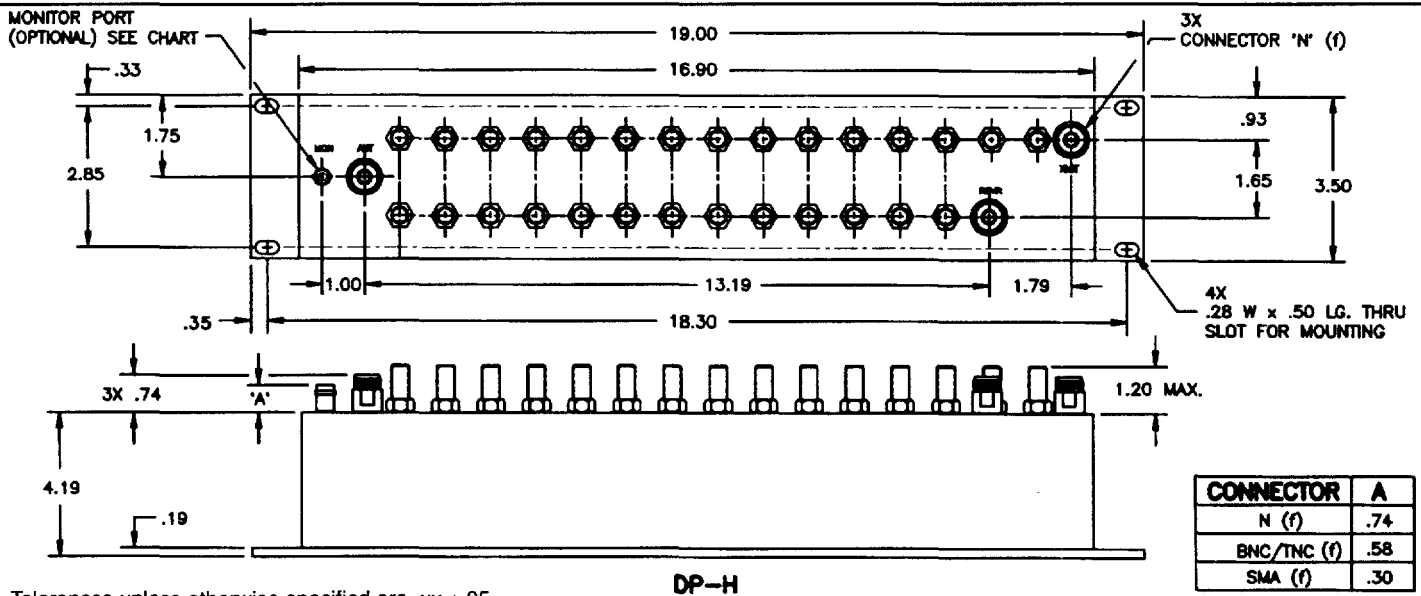
Rejection Vs. Frequency



Outline



DP-S



DP-H

Tolerances unless otherwise specified are .xx ±.05

RLC ELECTRONICS, INC.

83 Radio Circle, Mt. Kisco, NY 10549
(914) 241-1334 • FAX (914) 241-1753
E-mail: sales@rlcelectronics.com
www.rlcelectronics.com

