

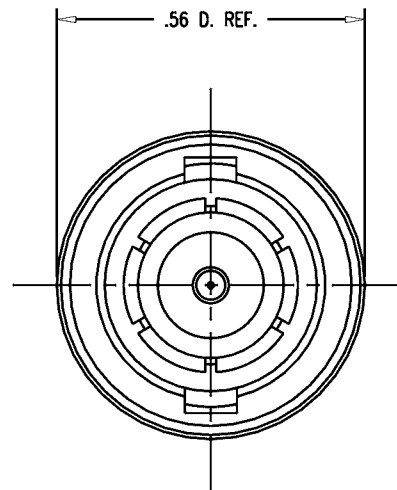
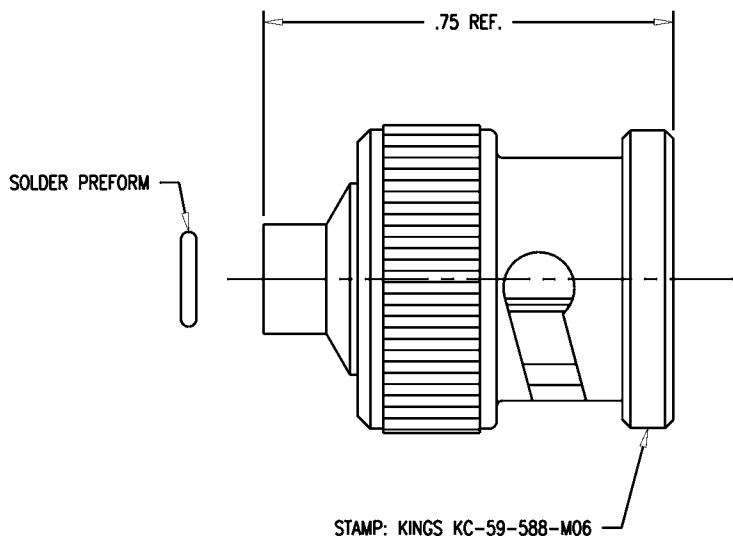
GSD

KC-59-588-M06

REVISIONS

ISSUE	CHANGES
0	ER 19910 MA 11/30/79

JCA3574



NOTES:

- FOR USE WITH RG-402/U CABLE (.141 SEMI-RIGID).
- FOR CABLING INSTRUCTIONS SEE 3-81.
- INTERFACE PER MIL-STD-348, FIG. 301-1.
- MATERIALS:
INSULATOR-TEFLON, ASTM-D-1457
GASKET-SILICONE RUBBER ZZ-R-765
SPRING WASHER-BERYLLIUM COPPER ASTM-B-196
ALL OTHER METAL PARTS-BRASS, ASTM-B16
- FINISHES:
CENTER CONTACT & BODY ASSY-HARD GOLD PLATE PER MIL-G-45204
SPRING WASHER-SILVER PLATE PER QQ-S-365
ALL OTHER METAL PARTS-KINGS TARNISH RESISTANT FINISH (TR-5)
- ELECTRICAL CHARACTERISTICS:
NOMINAL IMPEDANCE-50 OHMS
WORKING VOLTAGE-500 VOLTS RMS
FREQUENCY RANGE-DC TO 4 GHz

SCALE 4:1	
APPROX SURFACE AREA	
WAS: E-8064	
USED ON	
REF: CANADIAN MARCONI 230-800044-000 REV. B	
PLUG, BNC	
DRAWN JCA	DATE 05/19/92
DESIGN MJB	DATE 05/20/92
APPR.	DATE

GSD

KINGS
ELECTRONICS CO., INC.
TUCKAHOE, NEW YORK 10707

KC-59-588-M06