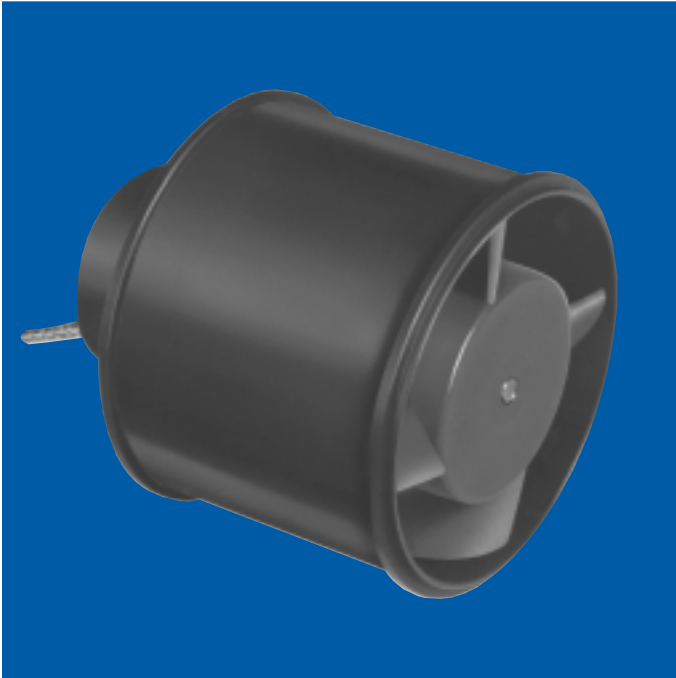


VAX-3-DC BLOWERS

DC Vaneaxial Blowers

C-5240



general design specification

airflow: 70 cfm @ 1.5" H₂O

voltage: 12 or 28 VDC

impeller: Dynamically balanced, precision cast aluminum

housing: Precision die-cast aluminum

bearings: Double shielded, life lubricated for -55°C to +85°C operation. Special lubricants available for temperature extremes

cables/leads: 8" min. shielded cable per MIL-C-7078, #22 AWG conductors per MIL-W-16878/4

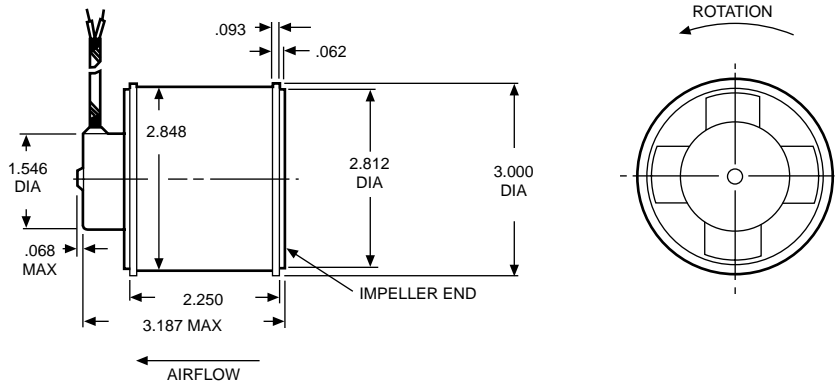
electrical connections: Shielded leads are provided. RFI filters available on special order

mounting: Mounting is made by clamping around diameter or by clamping to servo flange at either end

marking: Per MIL-STD-130

life: 500 hours constant duty at 28 VDC

Dimensions



ROTATION FOR SPECIFIED AIRFLOW
POSITIVE VOLTAGE TO (RED), NEGATIVE VOLTAGE TO (BLACK)

NOTE: Consult factory prior to preparing spec control prints. Dimensions are for reference only

Standard Part Numbers and Data

VOLTAGE (VDC)	SPEED min @ free air (rpm)	AIRFLOW typ @ free air (cfm)	CURRENT max @ free air (amps)	WEIGHT max (oz.)	STANDARD PART NUMBER*
12	11,700	95	2.75	16.0	19A820
28	13,000	110	1.50	16.0	19A827

*When You Order

Units shown above are standard and may be ordered by part number. Motor windings, voltage, speed, current and airflow can usually be modified to fit your needs

Typical Performance:

Part No.: 19A820
 Voltage: 12 VDC
 Operating Point: 60 cfm @ 1.2" H₂O

Part No.: 19A827
 Voltage: 28 VDC
 Operating Point: 70 cfm @ 1.5" H₂O

