

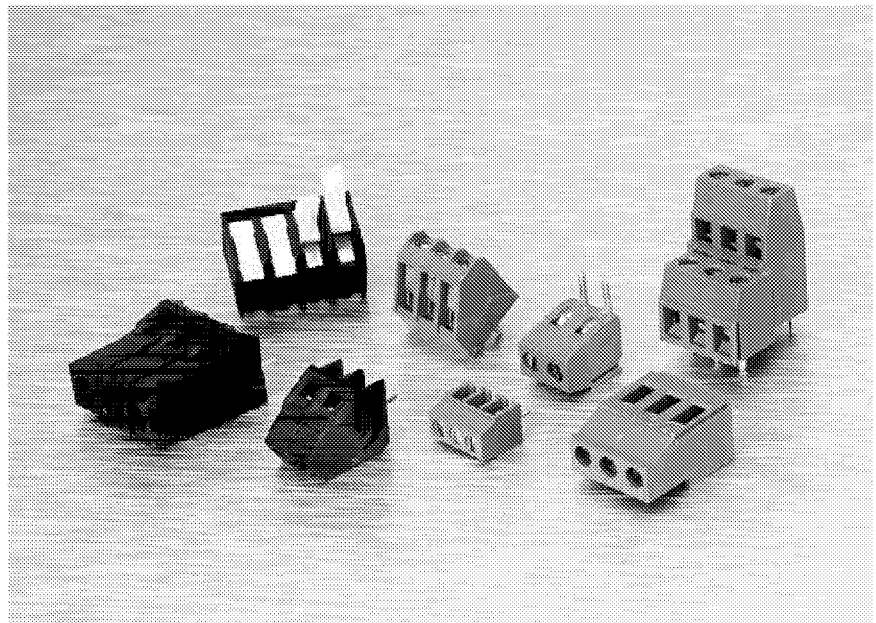
**DESCRIPTION/ APPLICATION**

Designed to European specifications, these one piece blocks facilitate wire to PC board connections. While all blocks are modular and can be interlocked together to extend the number of terminals to any length, molded-to-length versions are also available.

**DESIGN ADVANTAGES**

- Pitches Available
  - 2,5mm (0.098")
  - 3,5mm (0.138")
  - 5,0mm (0.197")
  - 5,08mm (0.200")
  - 0.250" (6,35mm)
  - 7,0mm (0.276")
  - 10mm (0.394")
  - 10,16mm (0.400")
- Effective 2,5mm for Double Decker Design.
- Vertical and horizontal solder pins available for most lines.
- Available in four connection styles:
  - Cage clamp for superior connection.
  - Wire protection for economical designs.
  - Tunnel connection for most economical designs.
  - Screwless clamp for quick connections.
- Special "interlocking" feature allows any length connector to be assembled in modular fashion — Also available molded to length.
- Thermoplastic insulator housing — UL94V-0 rated.
- Gold and silver plated terminals available in addition to standard tin plating.
- Hot stamped terminal marking available.
- Test points for direct reading built into many connectors.

# ONE PIECE CONNECTORS



**CONNECTOR INDEX**

2,5mm Surface Mount with Screwless Clamp .....	8
3,5mm Standard with Wire Protector .....	9
3,5mm Standard with Tunnel Connection .....	10
5mm Standard with Cage Clamp .....	11, 14
5mm Standard with Wire Protector .....	12, 15
5mm Standard with Tunnel Connection .....	13
5mm High Profile with Cage Clamp .....	16
5mm High Profile with Wire Protector .....	17
5mm High Profile with Tunnel Connection .....	18
5mm Angular with Cage Clamp .....	19, 20
5mm Double Decker with Cage Clamp .....	21, 22
5,08mm Standard with Cage Clamp .....	23
5,08mm Standard with Wire Protector .....	24
5,08mm Angular with Cage Clamp.....	25
5,08mm Angular with Wire Protector .....	26
5,08mm Double Decker with Cage Clamp.....	27
5,08mm Standard with Screwless Clamp .....	28
0.250" Standard with Cage Clamp.....	29

## 5,08MM STANDARD CONNECTORS WITH CAGE CLAMP SERIES 2EEV, 2EER

### PHYSICAL PROPERTIES

#### Housing:

HOUSING MATERIAL: Thermoplastic  
 FLAMMABILITY: UL94V-0  
 COLOR: Black

#### Terminal:

CAGE CLAMP & SOLDER PIN: Bright acid-tin plated copper alloy  
 SOLDERABILITY: MIL STD 202, Method 208  
 SCREWS: Zinc plated steel, 3-48 UNC

#### Mechanical:

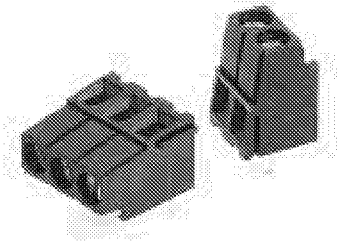
PITCH (TERMINAL SPACING): 5,08mm  
 RECOMMENDED PCB HOLE DIA.: 0.062" Dia.  
 RECOMMENDED TIGHTENING TORQUE: 4.5 in. lb.

### ELECTRICAL PROPERTIES

MAXIMUM CURRENT: 20 A  
 OPERATING VOLTAGE: 300 V (limited rating)  
 WIRE RANGE: 12-22 AWG (solid or stranded)

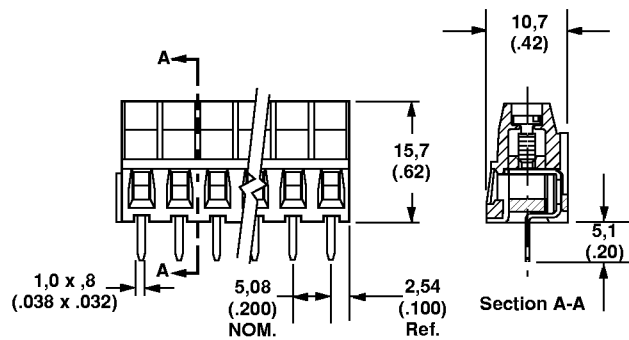
### ENVIRONMENTAL PROPERTIES

MAX. OPERATING TEMPERATURE: 120° C.

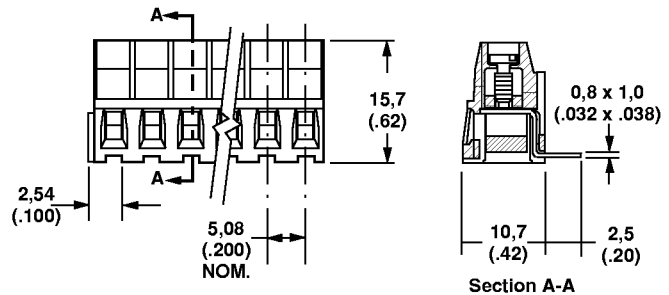


5,08 mm Pitch

#### 2EEV (vertical solder pins)

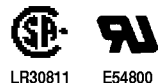


#### 2EER (right angle solder pins)



#### Ordering Information

# OF TERMINALS	5,08 MM VERTICAL	5,08 MM RIGHT ANGLE
2	2EEV-02	2EER-02
3	2EEV-03	2EER-03
4	2EEV-04	2EER-04
5	2EEV-05	2EER-05
6	2EEV-06	2EER-06
7	2EEV-07	2EER-07
8	2EEV-08	2EER-08
9	2EEV-09	2EER-09
10	2EEV-10	2EER-10
11	2EEV-11	2EER-11
12	2EEV-12	2EER-12
13	2EEV-13	2EER-13
14	2EEV-14	2EER-14
15	2EEV-15	2EER-15
16	2EEV-16	2EER-16
17	2EEV-17	2EER-17
18	2EEV-18	2EER-18
19	2EEV-19	2EER-19
20	2EEV-20	2EER-20
21	2EEV-21	2EER-21
22	2EEV-22	2EER-22
23	2EEV-23	2EER-23
24	2EEV-24	2EER-24



LR30811 E54800

### 5,08MM STANDARD CONNECTORS WITH WIRE PROTECTOR SERIES 2MV, 2MR

#### PHYSICAL PROPERTIES:

##### Housing:

HOUSING MATERIAL: Thermoplastic polyester

FLAMMABILITY: UL94V-0

COLOR: Black

##### Terminal:

CAGE CLAMP & SOLDER PIN: Bright acid-tin over copper alloy

WIRE PROTECTOR: Stainless steel

SCREW: Zinc plated steel with clear chromate, 3-48 UNC

##### Mechanical:

PITCH (TERMINAL SPACING): 5,08mm

RECOMMENDED PCB HOLE DIA.: 1,4mm

#### ELECTRICAL PROPERTIES:

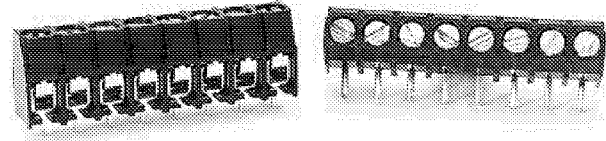
MAXIMUM CURRENT: 20 A

OPERATING VOLTAGE: 300 V (limited rating)

WIRE RANGE: 12-22 AWG

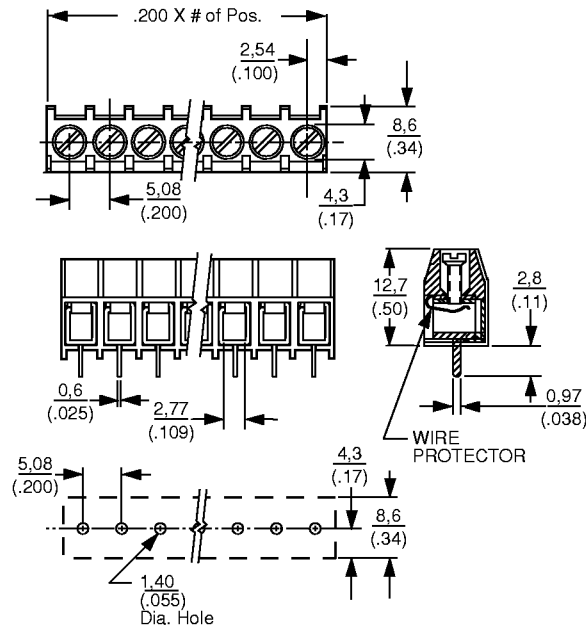
#### ENVIRONMENTAL PROPERTIES:

MAX. OPERATING TEMPERATURE: 120°C

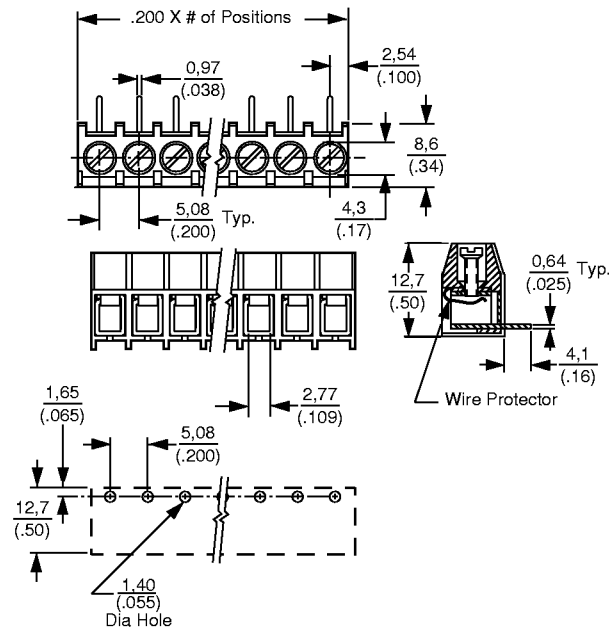


5,08 mm Pitch

#### 2MV (vertical solder pins)



#### 2MR (right angle solder pins)



#### Ordering Information

# OF TERMINALS	5,08 MM VERTICAL	5,08 MM RIGHT ANGLE
2	2MV-02	2MR-02
3	2MV-03	2MR-03
4	2MV-04	2MR-04
5	2MV-05	2MR-05
6	2MV-06	2MR-06
7	2MV-07	2MR-07
8	2MV-08	2MR-08
9	2MV-09	2MR-09
10	2MV-10	2MR-10
11	2MV-11	2MR-11
12	2MV-12	2MR-12
13	2MV-13	2MR-13
14	2MV-14	2MR-14
15	2MV-15	2MR-15
16	2MV-16	2MR-16
17	2MV-17	2MR-17
18	2MV-18	2MR-18
19	2MV-19	2MR-19
20	2MV-20	2MR-20
21	2MV-21	2MR-21
22	2MV-22	2MR-22
23	2MV-23	2MR-23
24	2MV-24	2MR-24



LR30811 E54800

