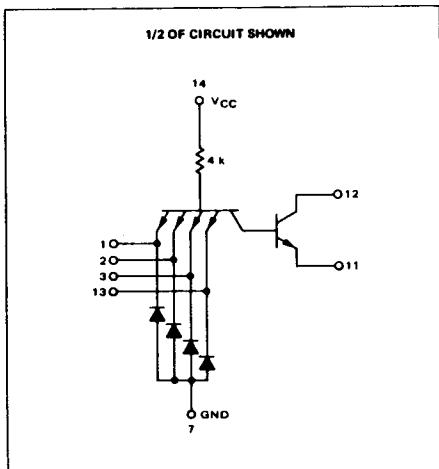


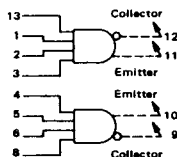
DUAL 4-INPUT EXPANDER
FOR "AND-OR-INVERT" GATES

MTTL MC7400P series
MTTL MC5400L/7400L series

MC5460L*
MC7460P,L*



This device consists of two 4-input OR expanders for use with the AND-OR-INVERT gates. A maximum of four expander gates can be added to the MC5450/7450 or MC5453/7453 expandable gates without seriously affecting their operation.



Input Loading Factor = 1
Full output loading factor of the expandable gate is maintained.
Total Power Dissipation = 8.0 mW typ/pkg
Propagation Delay Time = 5.0 ns typ

* L suffix = TO-116 ceramic package (Case 632)
P suffix = TO-116 plastic package (Case 605)
See General Information section for package outline dimensions.

SWITCHING TIME TEST CIRCUIT

VOLTAGE WAVEFORMS AND DEFINITIONS

