

PRODUCT DATA DRAWING

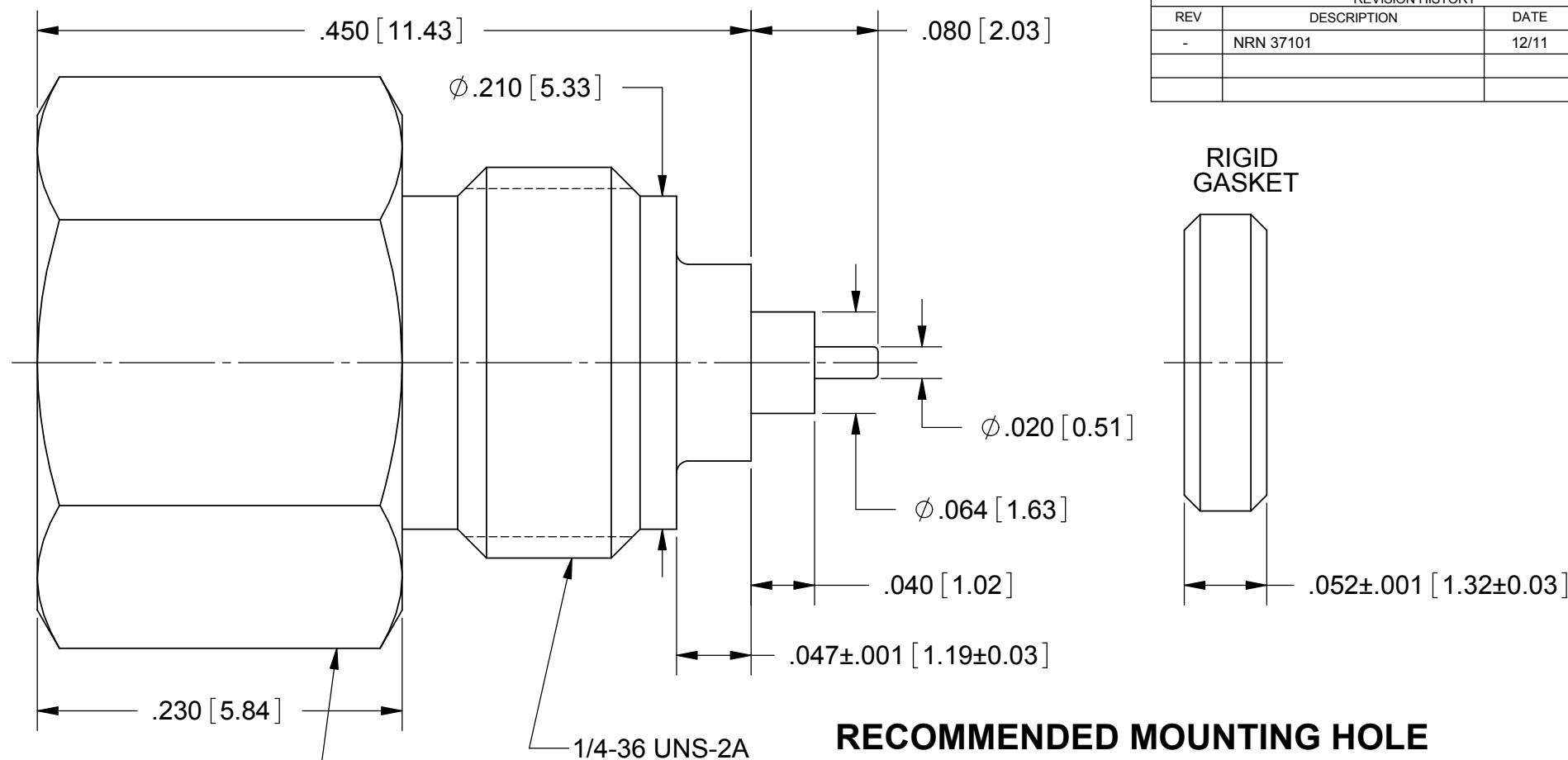
REVISION HISTORY			
REV	DESCRIPTION	DATE	APPROVED
-	NRN 37101	12/11	STW

MATERIAL:

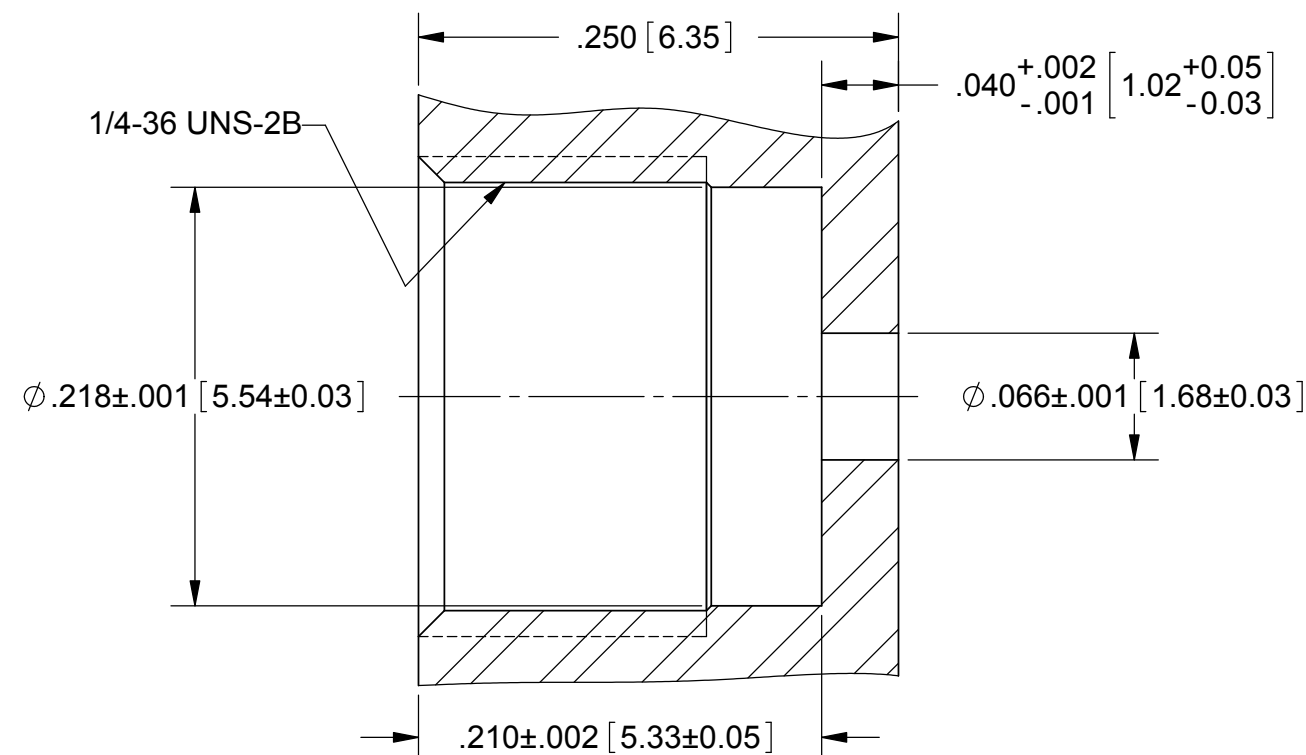
- BODY, INSERT:** STAINLESS STEEL PER AMS-5640, ALLOY UNS S30300, TYPE 1.
- METAL GASKET:** STAINLESS STEEL PER ASTM-A276 UNS S44004, TYPE 440C.
- CONTACT & SHIM SPRING:** BERYLLIUM COPPER PER ASTM B196, ALLOY No. UNS C17300, TD04.
- INSULATOR:** PTFE PER ASTM D1710, TYPE I, GRADE 1, CLASS B.
- PIN:** KOVAR PER ASTM-F15.
- GLASS:** CORNING 7070 OR EQUIVALENT.
- FINISH:**
- BODY:** PASSIVATED PER AMS-2700
- CONTACT, SHIM SPRING, INSERT & PIN:** GOLD PER ASTM B 488, TYPE II, CODE C, CLASS .76; OVER NICKEL PER AMS-QQ-N-290, CLASS 1, .00005" MIN.
- METAL GASKET:** SILVER PER QQ-S-365, TYPE II, GRADE A (.0002"-.0003") WITH TARNISHING PROTECTION.

PERFORMANCE:

- IMPEDANCE:** 50 OHMS
- FREQ. RANGE:** DC TO 22.0 GHz
- VSWR:** 1.30:1 DC TO 22.0 GHz
- DWV:** 1000 VRMS
- INSUL. RES.:** 5000 MEGOHMS MIN.



RECOMMENDED MOUNTING HOLE



MATERIAL: SEE NOTES	DIMENSIONS ARE IN INCHES TOLERANCES: FRACTIONAL: ±1/64 ANGULAR: X° ±1'0" X"X' ±15'	UNLESS OTHERWISE SPECIFIED 1) ALL DIMENSIONS ARE IN INCHES (MILLIMETERS) 2) ALL DIMENSIONS ARE AFTER PLATING. 3) BREAK CORNERS & EDGES .005 R. MAX. 4) CHAM. 1ST & LAST THREADS. 5) SURFACE ROUGHNESS 63-MIL-STD-10. 6) DIA.'S ON COMMON CENTERS TO BE CONCENTRIC WITHIN .005 T.I.R. 7) REMOVE ALL BURRS	SV Microwave, Inc. 2400 Centrepark West Drive, Suite 100 West Palm Beach, FL 33409
FINISH: SEE NOTES	DECIMAL: X ±.030 .XX ±.010 .XXX ±.005	INTERPRET DIMENSIONS AND TOLERANCES PER ASME Y14.5M - 1994	TITLE: BMA JACK RECEPTACLE HERMETIC SEAL PANEL FEEDTHRU W/ RIGID GASKET
SURFACE AREA: N/A	THIRD ANGLE PROJECTION	DRAWN: FED 12/01/11 CHECKED: STW 12/01/11 APPROVED: STW 12/01/11	SIZE: B CAGE CODE: 95077 DWG. NO.: SF1721-60925
PROPRIETARY THE INFORMATION CONTAINED IN THIS DRAWING IS THE SOLE PROPERTY OF SV MICROWAVE, INC. ANY REPRODUCTION IN PART OR AS A WHOLE WITHOUT THE WRITTEN PERMISSION OF SV MICROWAVE, INC IS PROHIBITED.		SCALE: 10:1	SHEET 1 OF 1