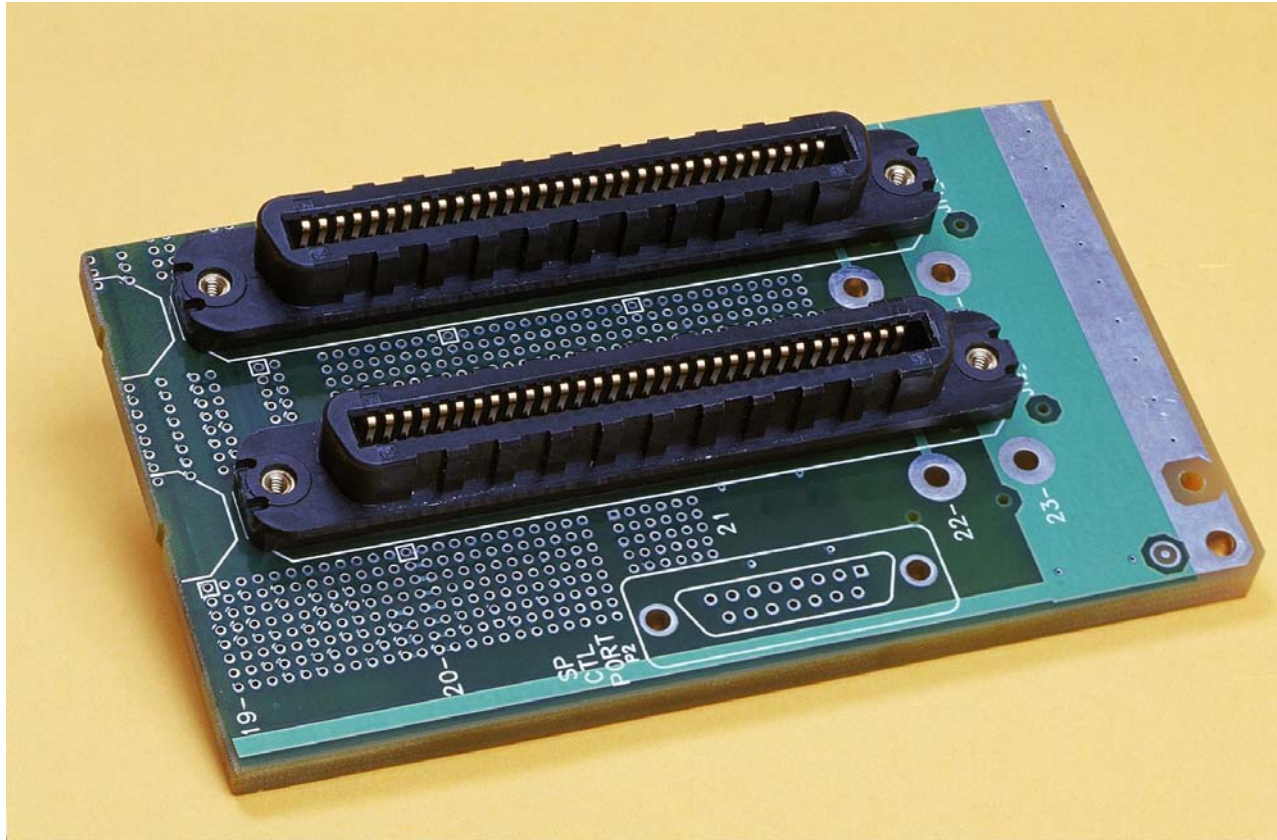


I/O Connector



I/O Connector

▶▶ Overview

▶▶ Applicable Documents

- ▶ Design Report 800-0021-80
- ▶ Tested to HP Spec A-37150-60001
- ▶ BT Spec - D2635

▶▶ I/O Connectors available in the following format

- ▶▶ Male (Plug) & Female (Receptacle)
- ▶▶ Press-Fit Contact Assembly onto the Board
- ▶▶ No. of Positions Varies from 14 thro' 64
- ▶▶ Options of Tappex Insert, Clear Hole or Tapped Hole
- ▶▶ Consult CTS for Specific Options Available
- ▶▶ Standard Performance Level 2 - 0.8 Microns Gold. Other Plating Thickness' Available on Request
- ▶▶ Recognised under the Component Program of Underwriters Laboratory Inc.
 - ▶ File No. E146014 (EI38262)
- ▶▶ Certified by Canadian Standards Association
 - ▶ File No. 168195-2500004694 (LR96683)
- ▶▶ Designed and Manufactured under a Quality Management System Certified to BS EN ISO 9001
- ▶▶ QMS also meets requirements of BABT PS 340



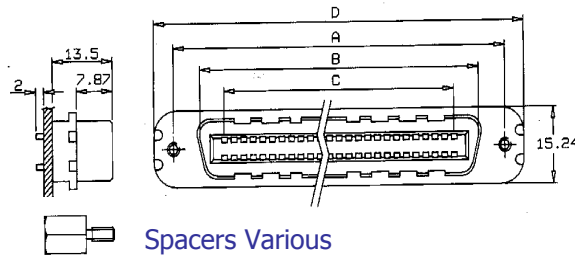
I/O Connector

▶▶ Performance Characteristics

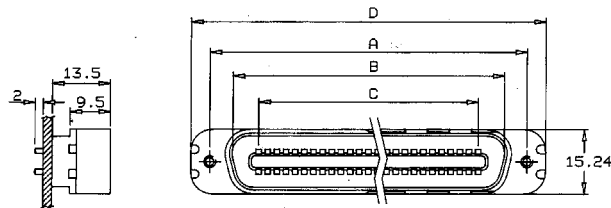
▶▶ Operating Temperature	-65° to +125° Deg C
▶▶ Operating Current	2.0A Continuous at 70°C
▶▶ Test Voltage	250 VAC
▶▶ Contact Resistance	15 mOhms Max
▶▶ Insulation Resistance	5000 MOhms Min
▶▶ Mating Force	4N Max/Contact Pair
▶▶ Withdrawal Force	0.6N Min/Contact Pair
▶▶ Plated Thro' Hole	0.035"/0.033 (Compliant)
▶▶ Housing	PBT 30% Glass Filled, UL94VO
▶▶ Contact Material	Phosphor Bronze per QQ-B-750 or BS2870 PB102EH

I/O Connector - Options Available (Male & Female)

TELECOM - I/O CONNECTOR FEMALE (RECEPTACLE)



TELECOM - I/O CONNECTOR MALE (PLUG)



CONFIGURATION	DIMENSIONS				FEMALE	MALE
	A	B	C	D	CTS Part Number	CTS Part Number
14 POSITION WITH TAPPEX INSERT	35.97	25.22	12.95	44.63	132-0074-81	132-0069-81
24 POSITION WITH TAPPEX INSERT	46.79	36.04	23.75	55.42	132-0075-81	132-0070-81
36 POSITION WITH TAPPEX INSERT	59.74	49.00	36.70	68.38	132-0076-81	132-0071-81
50 POSITION WITH TAPPEX INSERT	74.83	64.11	51.81	83.49	132-0077-81	132-0072-81
64 POSITION WITH TAPPEX INSERT	89.97	79.22	66.93	98.60	132-0078-81	132-0073-81
14 POSITION WITH .125" DIA CLEAR HOLE	35.97	25.22	12.95	44.63	132-0139-81	132-0134-81
24 POSITION WITH .125" DIA CLEAR HOLE	46.79	36.04	23.75	55.42	132-0140-81	132-0135-81
36 POSITION WITH .125" DIA CLEAR HOLE	59.74	49.00	36.70	68.38	132-0141-81	132-0136-81
50 POSITION WITH .125" DIA CLEAR HOLE	74.83	64.11	51.81	83.49	132-0142-81	132-0137-81
64 POSITION WITH .125" DIA CLEAR HOLE	89.97	79.22	66.93	98.60	132-0143-81	132-0138-81
14 POSITION WITH .075" DIA TAPPING HOLE	35.97	25.22	12.95	44.63	132-0149-81	132-0144-81
24 POSITION WITH .075" DIA TAPPING HOLE	46.79	36.04	23.75	55.42	132-0150-81	132-0145-81
36 POSITION WITH .075" DIA TAPPING HOLE	59.74	49.00	36.70	68.38	132-0151-81	132-0146-81
50 POSITION WITH .075" DIA TAPPING HOLE	74.83	64.11	51.81	83.49	132-0152-81	132-0147-81
64 POSITION WITH .075" DIA TAPPING HOLE	89.97	79.22	66.93	98.60	132-0153-81	132-0148-81

PRESSFIT CONNECTOR HOLE SPECIFICATIONS (COMPLIANT PIN)						
FINISHED HOLE SIZE		BARREL COPPER PLATE		BARREL TIN/LEAD PLATE		PAD SIZE
MIN	MAX	MIN	MAX	MIN	MAX	NOMINAL
0.0335 (0.851)	0.0369 (0.937)	0.0020 (0.051)	0.0040 (0.101)	0.0006 (0.015)	0.0010 (0.025)	0.0550 (1.397)

IO COVERS		
CTS PART NUMBER		DESCRIPTION
FEMALE	MALE	
083-0289-80	083-0288-80	FOR 14 POSITION CONNECTOR
083-0284-80	083-0284-80	FOR 24 POSITION CONNECTOR
083-0291-80	083-0291-80	FOR 36 POSITION CONNECTOR
083-0277-80	083-0277-80	FOR 50 POSITION CONNECTOR
083-0282-80	083-0282-80	FOR 64 POSITION CONNECTOR

More Information

- ▶▶ For more information on the I/O, or any other CTS connectors:
 - ▶ SCA-2
 - ▶ Card Edge
 - ▶ 2mm Hard Metric
 - ▶ 2mm Futurebus
 - ▶ 2mm Futurebus Shielded
 - ▶ DIN
- ▶▶ Please contact your local sales representative (see over) or as listed below:

CTS Interconnect Systems (**North America**)
34, Londonderry Rod, Londonderry, NH 03053
Tel: (001) 603-421-2546
Fax: (001) 603-421-1763
Email: sales@is.ctscorp.com

CTS Interconnect Systems (**Asia**)
4 Yuan Building, 37 Huang Hai Rd,
TEDA,, Tanggu, 300457 Tianjin PR China
Tel: (+44) 01698 505050
Fax: (+44) 01698 506050
Email: sales@is.ctscorp.com

CTS Interconnect Systems (**Europe HQ**)
Blantyre Industrial Estate, Glasgow G72 0XA
Tel: (+44) 01698 505050
Fax: (+44) 01698 506050
Email: sales@is.ctscorp.com

CTS Interconnect Sales Offices

▶▶ **North America - Canada**

- ▶▶ Electrosource Canada
 - ▶ 50, Hines Rd, Suite 220
 - ▶ Kanata, Ontario, K2K 2M5
 - ▶ Email: malcolm_wood@electro-source.ca

▶▶ **USA**

- ▶▶ Mil-rep
 - ▶ 13810 Champions Forest Dr,
 - ▶ Suite 145
 - ▶ Houston TX 77069
 - ▶ Tel: (001) 281-444-2557
 - ▶ Email: Fred_Palmer@mil-rep.com

- ▶▶ Jarko
 - ▶ PO Box 14977, Scottsdale
 - ▶ Az 85267-4977
 - ▶ Tel: +001-480-596-8533
 - ▶ Email:joenick@jarko.com

▶▶ **USA (Cont.)**

- ▶▶ Selmark Associates
 - ▶ 100 Medway Rd, Suite 203
 - ▶ Milford, MA 01757
 - ▶ Tel: (001) 508-478-9088

▶▶ **Cetan**

- ▶▶ 9708 Monroe St, Suite 101
- ▶ Cockeysville, MD 21030
- ▶ Tel: (001) 410-666-7300
- ▶ Email: doran@cetaninc.com

▶▶ **Europe - France**

- ▶▶ P2M
 - ▶ 8, allée des Châtaigniers
 - ▶ Z.A du Buisson de la Coudre
 - ▶ 78190 Trappes, France
 - ▶ Tel: +33 01-30-62-64-64
 - ▶ Email: p2mblgm@iway.fr

▶▶ **Europe (Cont) Scandinavia**

- ▶▶ Compomill AB
 - ▶ Box 2065
 - ▶ 194 02 Upplands Vasby
 - ▶ Sweden
 - ▶ Tel: +46(0) 8594-111-50
 - ▶ Email: info@compomill.se

▶▶ **Ireland**

- ▶▶ Jarko Associates Inc
 - ▶ Couthouse Chambers
 - ▶ 27/29 Washington St,
 - ▶ Cork, Ireland
 - ▶ Tel: (353) 21-4-274-775
 - ▶ Email: gthornhill@eircom.net

▶▶ **Israel**

- ▶▶ Aviv Technologies Ltd.
 - ▶ 10 Nachshon St,
 - ▶ 44447 Kfak Saba
 - ▶ Israel
 - ▶ Tel +972 9 7668972
 - ▶ Email: leo@avivelec.co.il

CTS Interconnect Systems, headquartered in Glasgow, Scotland, designs and manufactures complex press-fit and surface mount backplanes, daughtercard assemblies and integrated interconnect systems. CTS Interconnect Systems is an operation of CTS Corporation, which is a leading designer and manufacturer of electronic components and assemblies for the communications, computer and automotive markets. The Company manufactures products in North America, Europe and Asia. The Company's stock is traded on the NYSE under the tick symbol "CTS."