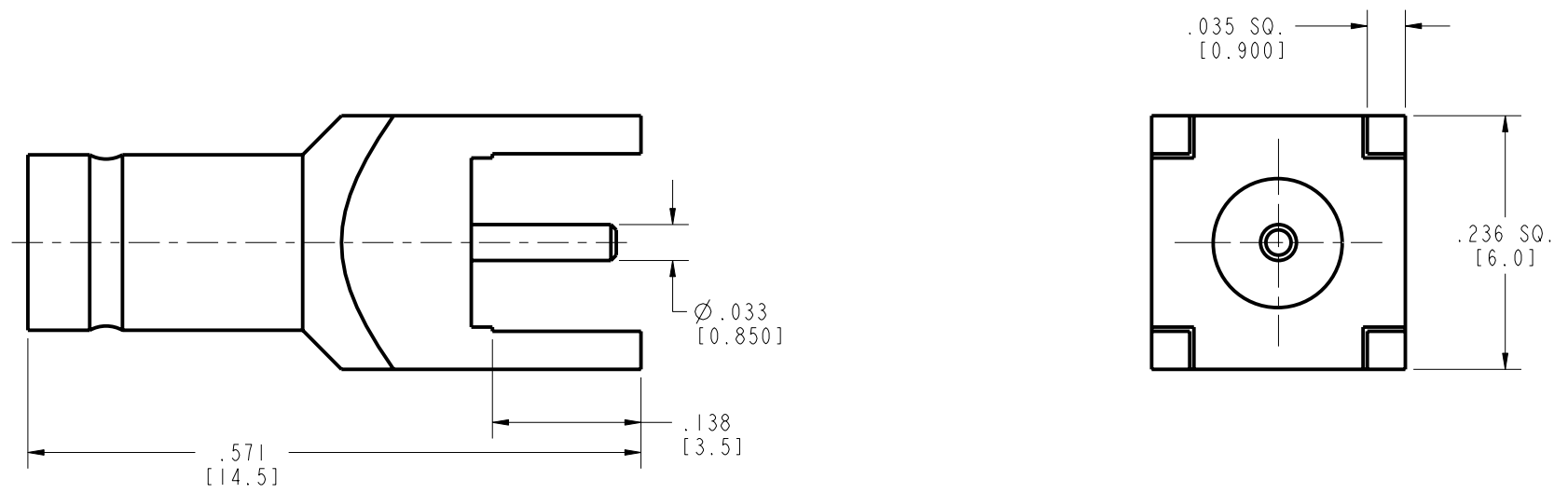


8 7 6 5 4 3 2 1

DRAWING REVISIONS			
REV	DOCUMENT	APP	DATE
I	PRELIM.		



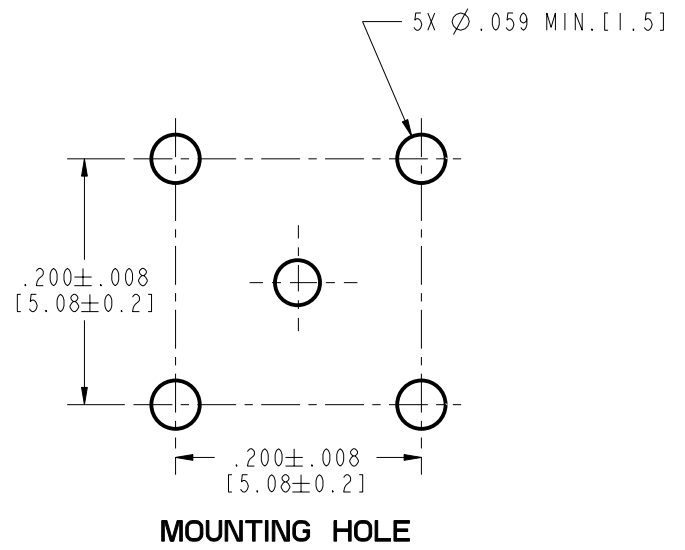
NOTES:
 1. SPECIFICATIONS:
 MATERIALS:
 BODY: BRASS
 PLATING: GOLD 3 MICRO INCHES MIN.
 CENTER CONTACT: Be Cu
 PLATING: GOLD 30 MICRO INCHES MIN.
 INSULATOR: TEFLON

ELECTRICAL
 IMPEDANCE: 50 Ohms
 FREQUENCY RANGE: 0 TO 4 GHz
 WORKING VOLTAGE: <= 250 V RMS MAX
 INSULATION RESISTANCE: >= 1000 MOhms
 CONTACT RESISTANCE:
 CENTER CONTACT: 6 MILLI Ohms MAX.
 OUTER CONTACT: 3 MILLI Ohms MAX.

MECHANICAL:
 DURABILITY: 500 MATING CYCLES.
 OPERATING TEMPERATURE: -65°C TO 125°C.
 CONNECTOR INTERFACE PER CECC 22 000

2. ALL DIMENSIONS ARE IN INCHES. DIMENSIONS IN [] ARE IN MM.

CINCH PART NO.	CINCH CATLOG NO.
299 99 00 394	DIN50-1301



MODELED BY:
A. BALI

UNITS ENGLISH		PRO/E	Cinch	1700 FINLEY RD LOMBARD, IL. 60148
DO NOT SCALE DRAWING	DRAWN BY ANIL BALI	DATE 09/14/01	TITLE DIN 1.0/2.3 SOCKET/JACK/STRA BOARD MOUNT, 50 Ohm.	
UNLESS OTHERWISE SPECIFIED: ALL DIMENSIONS ARE IN INCHES FILLET/RADIUS .02 MAX TOLERANCES AND LIMITS APPLY OVER ADDITIVE FINISH	DESIGN ENGINEER ANIL BALI	09/14/01	MATERIAL SEE NOTE	
	DESIGN ENGINEERING MGR.		MATERIAL SPEC NUMBER	FINISH
THIS DOCUMENT IS THE PROPERTY OF CINCH. NEITHER THIS DOCUMENT NOR ANY OF THE INFORMATION CONTAINED IN IT MAY BE DUPLICATED OR DISCLOSED WITHOUT PRIOR WRITTEN CONSENT OF CINCH.	MFG. ENGINEERING		CAD FILE NUMBER DIN501301	DRAWING NUMBER DIN50-1301
	QUALITY ASSURANCE		CAGE IDENT NO. SIZE 71785 B	SCALE 4:1
				SHEET 1 OF 1

D
C
B
A

D
C
B
A

8 7 6 5 4 3 2 1