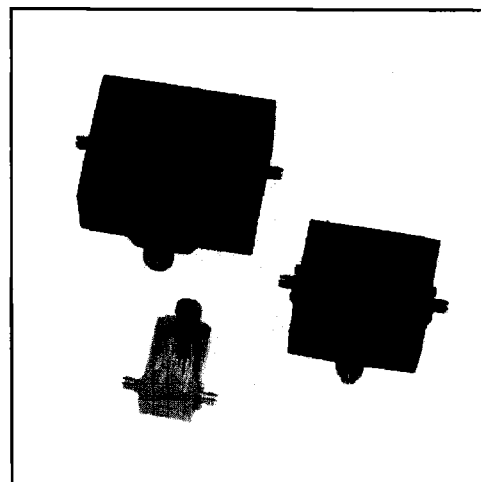


4-26.5 GHz

# MINIATURE VARIABLE ATTENUATORS

- Usable From 4 to 33 GHz
- Low Minimum Insertion Loss
- Small Size, Lightweight
- Operational to 105°C Without Degradation (125°C Storage)
- Excellent Communications Band (Narrow Band) Performance



## SPECIFICATIONS

FREQUENCY RANGE (GHz)	MODEL	ATTENUATION dB		POWER INPUT		VSWR (Max)	INSERTION LOSS (Max dB)		FREQUENCY SENSITIVITY dB		WEIGHT (Max)	
		RANGE (Min)	AVG. W(Max)	PEAK kW(Max)	4.0-7.0		7.0-18.0	8-12.4	12.4-18.0	Oz	Gr	
12.4-18	4797	45	10	3	1.3	1.0	±3.0		12	340		
7-18	4798	20	5	3	1.7	0.5	±3.0		2	57		

Connectors: SMA Female

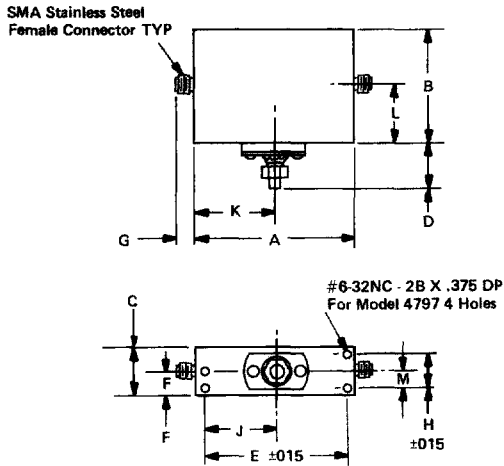
FREQUENCY RANGE (GHz)	MODEL	ATTENUATION RANGE dB (Min)	POWER INPUT		VSWR (Max)		INSERTION LOSS (Max dB)		FREQUENCY SENSITIVITY dB		WEIGHT (Max)	
			AVG. W(Max)	PEAK kW(Max)	4.0-7.0	7.0-18.0	4.0-12.4	12.4-18	8-12.4	12.4-18.0	Oz	Gr
4-18	4799	15	5	3	1.5	1.3	0.7	1.0	±0.5	±2.0	7.5	213

Connectors: SMA Female

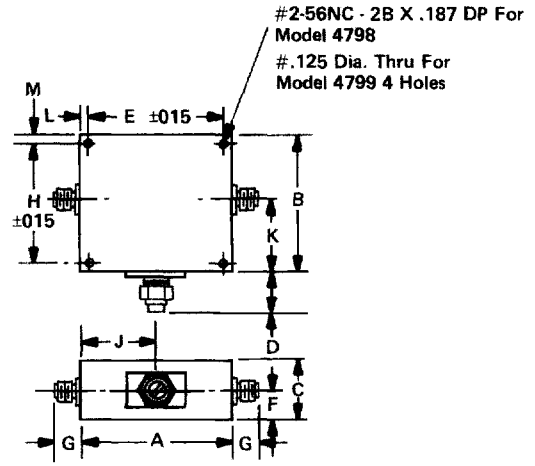
FREQUENCY RANGE (GHz)	MODEL	ATTENUATION RANGE dB (Min)	POWER INPUT		VSWR (Max)	INSERTION LOSS (Max dB)		FREQUENCY SENSITIVITY (dB)		WEIGHT (Max)	
			AVG. W(Max)	PEAK kW(Max)		7-12.4	12.4-26.5			Oz	Gr
7-26.5	4796	15	5	1.4	1.7	0.7	1.5	±3.0		7.5	213

Connectors: 3.5mm Female

OUTLINE DRAWINGS

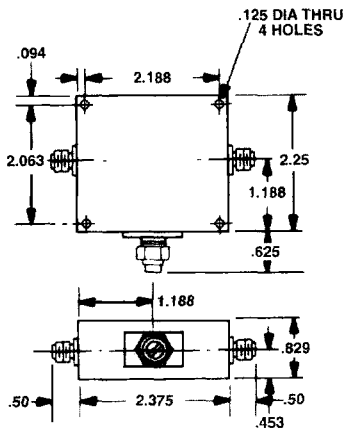


Model 4797

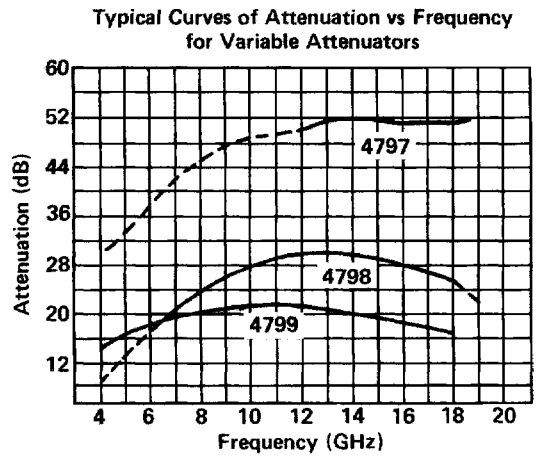


Models 4798 and 4799

Model	A	B	C	D	E ±.015	F	G	H ±.015	J	K	L	M
4797	3.26	2.64	1.01	.92	3.000	.51	.33	0.625	1.51	1.63	1.47	.32
4798	1.02	1.76	0.51	.51	0.875	.26	.38	1.630	0.50	1.32	0.07	.07
4799	2.38	2.26	0.92	.63	2.187	.46	.38	2.062	1.19	1.19	0.10	.10



Model 4796



All dimensions are Max. unless otherwise specified.