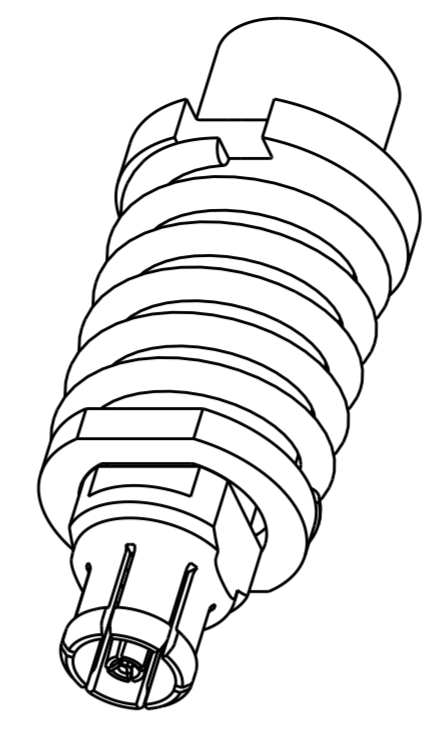


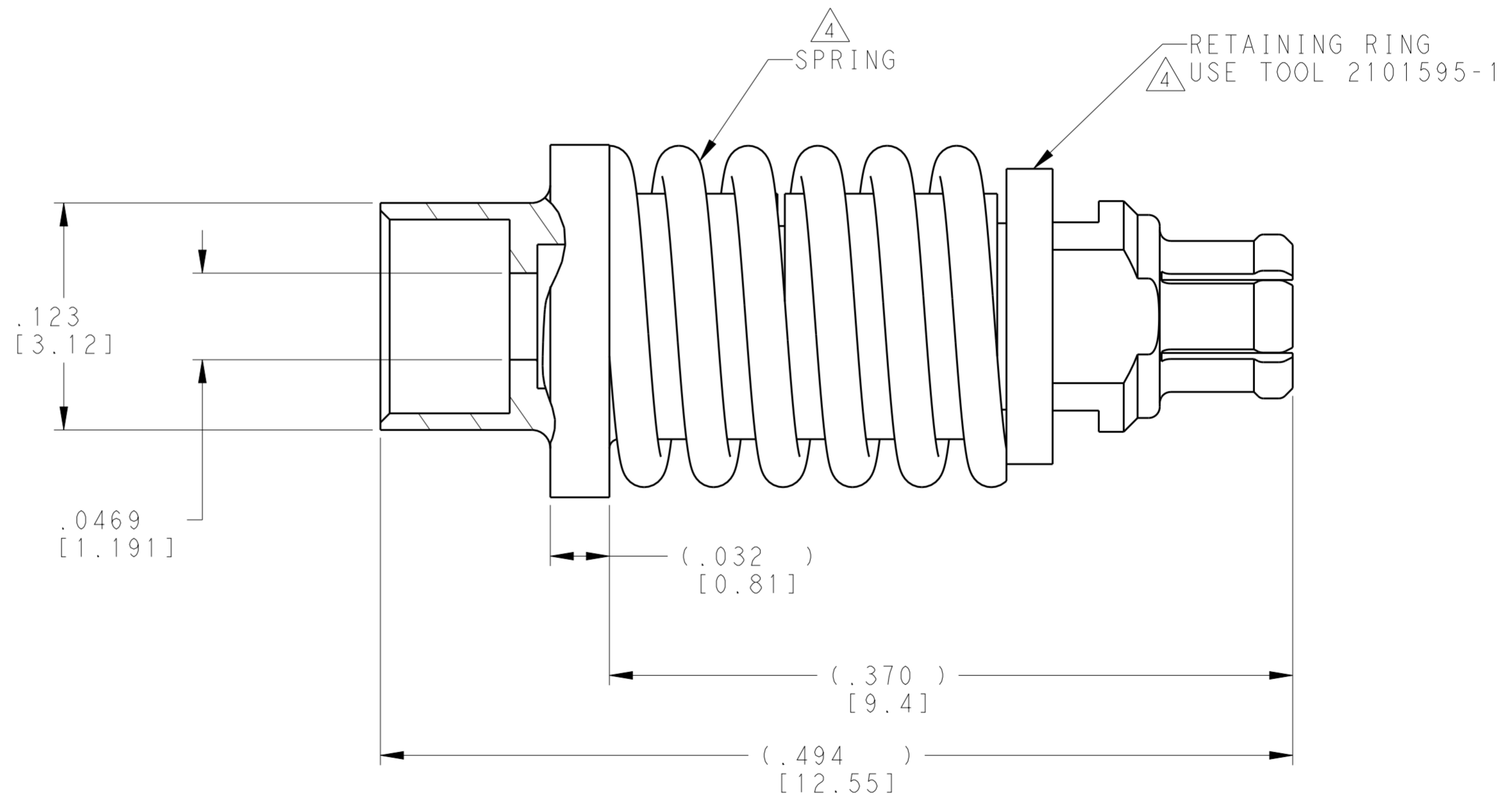
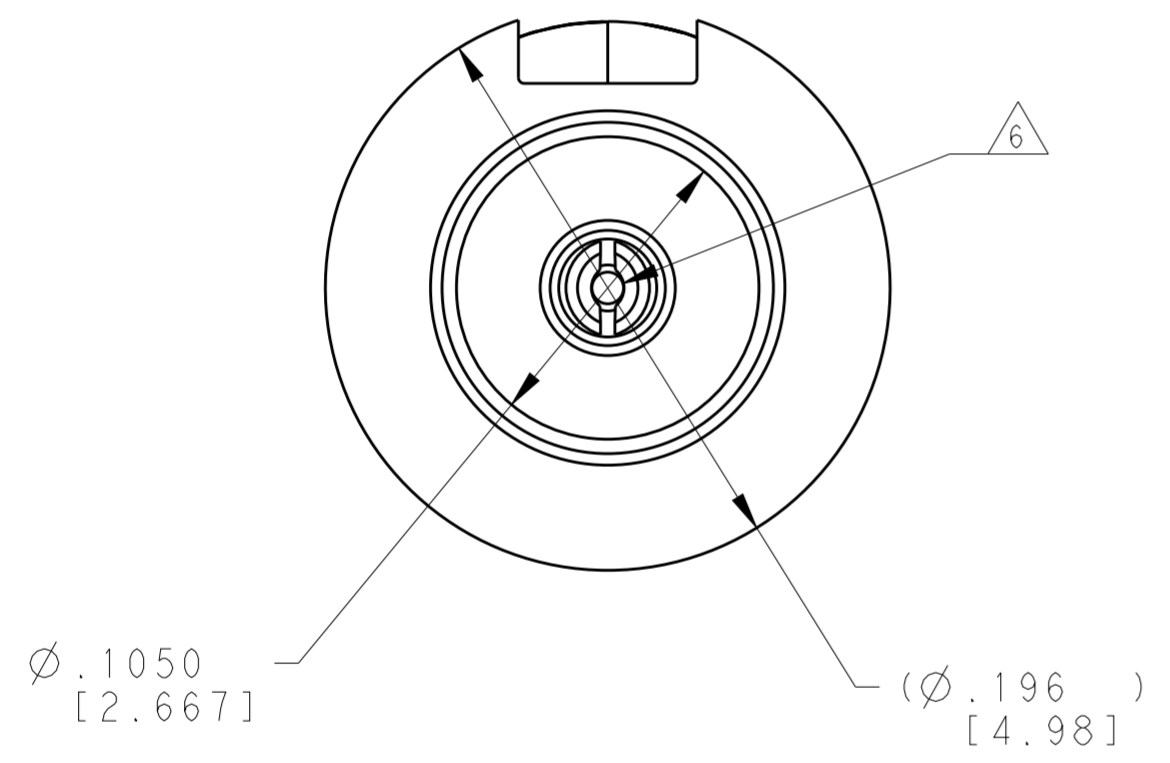
THIS DRAWING IS UNPUBLISHED. RELEASED FOR PUBLICATION
 © COPYRIGHT - BY - ALL RIGHTS RESERVED.

REVISIONS						
LOC	DIST	P	LTR	DESCRIPTION	DATE	APVD
-	-	A		RELEASED PER ECO 14-003286	3-7-14	CT WM

- 1 MATERIAL:
 BODY & CENTER CONTACT - BERYLIUM COPPER,
 ALLOY UNS C17300 CONDITION TDO4, PER ASTM B196
 INSULATOR - (PTFE) ROD, PER ASTM D 1710
 RETAINING RING - STAINLESS STEEL, PER UNS S30200
 SPRING - MUSIC WIRE, PER ASTM A228
- 2 FINISH:
 BODY & CENTER CONTACT - GOLD PLATE, PER ASTM B488
 OVER NICKEL PLATE PER SAE-ASM-QQ-N-290
 RETAINING RING - PASSIVATED
 SPRING - NICKEL PLATE, PER SAE-ASM-QQ-N-290
- 3. SPRING FORCE:
 PRELOAD = 2.35 ±.25 LBF
 FORCE AT .052 DEFLECTION = 3.60±.25 LBF
 MINIMUM FULL DEFLECTION = .078 [2.0]
- 4 RETAINING RING AND SPRING SHIPPED UNASSEMBLED.
- 5. PART DESIGNED FOR USE WITH ASTROLAB 32041 CABLE.
- 6 SOCKET CENTER CONTACT ACCEPTS CABLE WITH
 .0140±.0005 OUTER DIAMETER.



SCALE 8:1



2221790-1
 PART NUMBER

THIS DRAWING IS A CONTROLLED DOCUMENT.		DWN C.C. THOMAS 3-7-14	TE Connectivity	
DIMENSIONS: INCHES [mm]		CHK W. MOYER 3-7-14		
TOLERANCES UNLESS OTHERWISE SPECIFIED:		APVD W. MOYER 3-7-14	NAME SMPM STRAIGHT CABLE JACK (F) FLOATING PANEL MOUNT	
0 PLC ±	1 PLC ±	PRODUCT SPEC	SIZE	CAGE CODE
2 PLC ±	3 PLC ±	APPLICATION SPEC	A200779	C-2221790
4 PLC ±.005 [0.13]	ANGLES ±1.0°	408-10373	SCALE	SHEET
FINISH		WEIGHT	15:1	1 OF 1
1	2	CUSTOMER DRAWING	REV	A