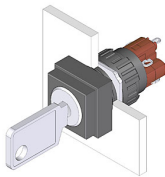


# EAO – Your Expert Partner for Human Machine Interfaces

## 51-355.025D2 - Keylock switch 2 positions

### 51-355.025D2 - Keylock switch 2 positions



*Attention: The preview is based on a sample product. This can differ from your current configuration.*

#### Mounting

Mounting cut-out                    Ø 16 mm  
Design                                    raised

#### Front

Front dimension                    18 mm x 18 mm  
Front shape                            square

#### Other Attributes

Weight                                    0,016 kg

#### Operating-/Indication part

Switching angle                    90° right

#### IP-Rating

Front protection                    IP65

#### Connection Method

Terminal                                Solder

#### Actuator

Switching action                    Rest - Maintain(a)

#### Switching element

Rotary positions                    2  
Switching system                    Snap-action switching element  
Switching current                    5 A  
Contacts                                1 NC + 1 NO  
Contact material                                        
Switching voltage                    250 V AC

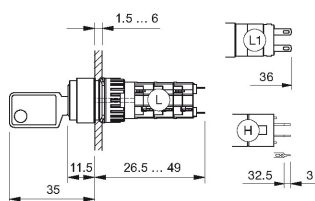
#### Function

Keylock switch

# EAO – Your Expert Partner for Human Machine Interfaces

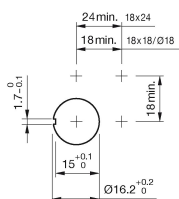
## 51-355.025D2 - Keylock switch 2 positions

### Dimensions

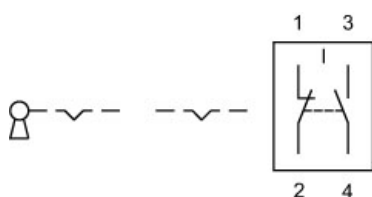


H = Universal terminal 2.0 x 0.5 mm

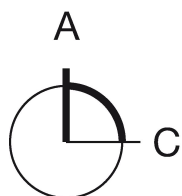
### Mounting cut-outs



### Wiring diagram



### Switching positions



### Additional information

Standard lock: DOM 311

Two keys are supplied with each key lock switch

Optional lock numbers on request

### Legend

Contacts: NC = Normally closed, NO = Normally open

Switching action: A = Rest, C = Maintained