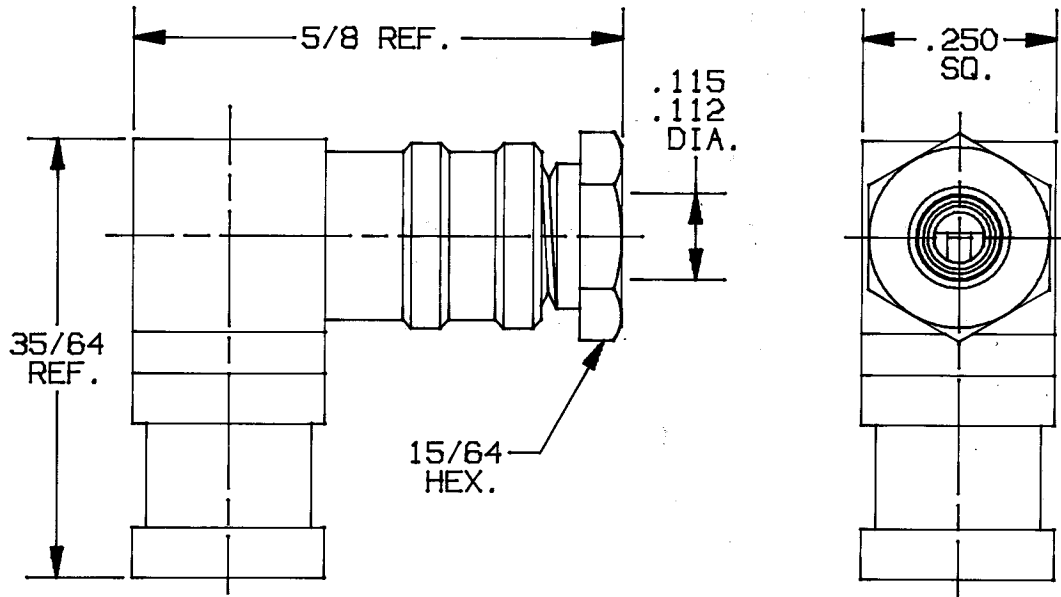


## CONFIGURATION



SMB, RIGHT ANGLE, WEDGE CLAMP  
PLUG TO RG188 & 316/U CABLE

DWG. NO.

2310-0008

## ELECTRICAL:

Nominal Impedance (Ohms)	50
Frequency Range (Ghz)	DC TO 4.0
Voltage Rating (Max. VRMS)	250
VSWR (Max.)	1.35+.040 X FGHz
Insertion Loss (db Max.)	.09
RF Leakage (Min. dB down)	65 DB-FGHz
RF High Potential (max. VRMS)	500 AT 5 MHz
Dielectric Withstanding Voltage (max. VRMS)	750
Insulation Resistance (Min. megohms)	1000
Contact Resistance:	
Center Contact (Max. milliohms)	6.0
Outer Contact (Max milliohms)	1.0

## MECHANICAL: PER MIL-C-39012/SMB SERIES & S/M MD-121

Interface Dimensions	N/A
Recommended Mating Torque	N/A
Center Contact Axial Forces:	
Insertion (Max. ounces)	40.0
Withdrawal (Min. ounces)	1.0
Connector Durability (Min. cycles)	500
Connector Engagement & Disengagement (Max. Inch lbs.) 14 (AXIAL FORCE)	
Center Contact Captivation	6 LBS. MIN. AXIAL FORCE

## ENVIRONMENTAL:

Temp. Rating (degrees centigrade)	-65°C TO +165°C
Vibration (MIL-STD-202, Method 213, Condition D, 20g, e)	
Shock (MIL-STD-202, Method 213, Cond. I, 100g, e)	
Temp. Cycling (MIL-STD-202, Method 107, Cond. B, -65c to 200° c)	
Moisture Resistance (MIL-STD-202, Method 106, Less Step 7b)	
Barometric Pressure (Altitude) MIL-STD-202, Method 105,	
Cond. C, 70,000 ft., 190 VRMS	
Hermeticity	N/A

CABLE ASSEMBLY INSTRUCTIONS PER S/M SPEC. 300-80-501.

## MATERIAL & FINISH:

BODIES, FERRULE, CLAMP NUT, SLEEVE & CAP: BRASS PER QQ-B-626, 1/2 H, ALLOY 360, GOLD PLATED PER MIL-G-45204, TYPE II, CLASS 1; OVER COPPER PER MIL-C-14550, CLASS 4.

SPRING: BERYLLIUM COPPER PER QQ-C-530, COND H, ALLOY 173, GOLD PLATED PER MIL-G-45204, TYPE II, GRADE C, CLASS 1; OVER COPPER PER MIL-C-14550, CLASS 4.

CONTACT: BERYLLIUM COPPER PER QQ-C-530, COND H, ALLOY 173, GOLD PLATED PER MIL-G-45204, TYPE 1, GRADE C, CLASS 1; OVER COPPER PER MIL-C-14550, CLASS 4.

INSULATOR: TEFLON PER MIL-P-19468 & L-P-403, TYPE 1.

SYM.	DESCRIPTION	DATE	APPR.	DRAWN:	APPROVED:
-	REL.F-11418	1/88	WJT	D. CARNES	WJT
				DATE 1/4/89	DATE 1/5/89

SOLITRON MICROWAVE  
1167 BLUE HERON BLVD.  
RIVIERA BEACH, FL., 33404

DWG. NO.

2310-0008