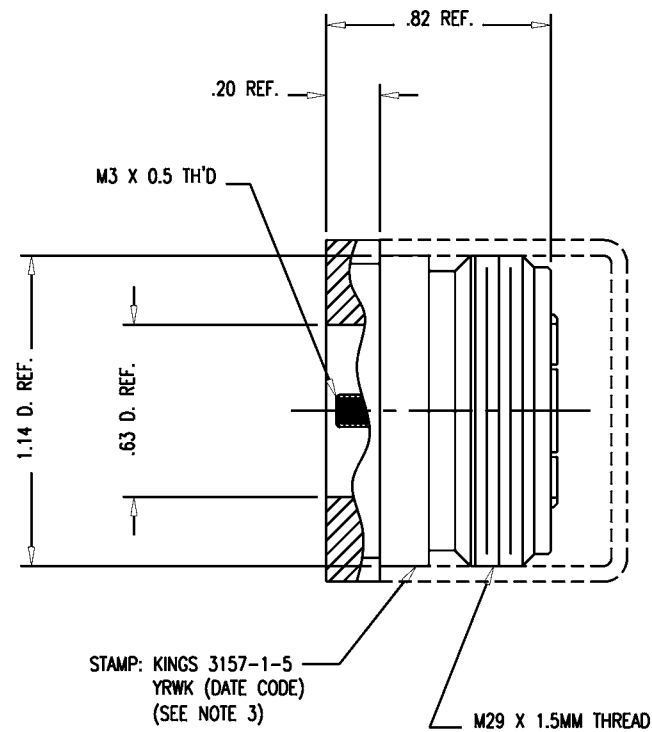
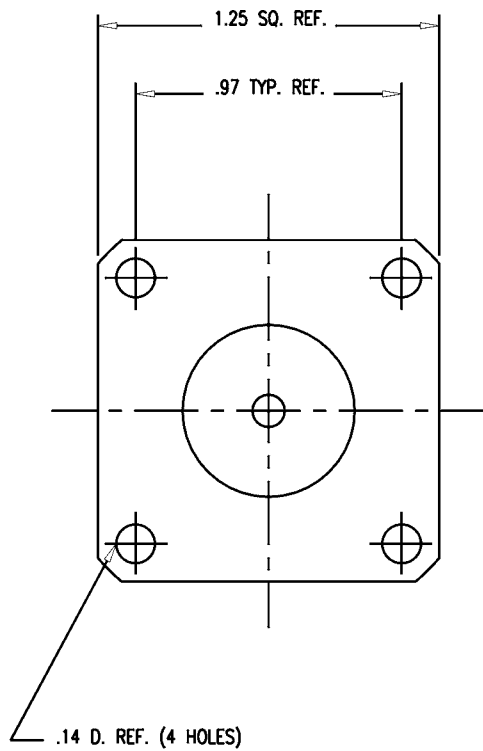


SD



NOTES:

- INTERFACE PER, IEC STANDARD 169-4 (TYPE 7-16 MM).
- MATERIAL:
CENTER CONTACT: BERYLLIUM COPPER.
CAP PROTECTIVE: VINYL.
INSULATOR: TEFLON.
ALL OTHER METAL PARTS: BRASS.
- FINISHES:
CENTER CONTACT: SILVER PLATE.
ALL OTHER METAL PARTS: KINGS TARNISH RESISTANT WHITE BRONZE ALLOY (TR-3) OR SILVER PLATE.
FOR SILVER PLATE, ORDER PART NUMBER AS SHOWN. FOR WHITE BRONZE PLATING, ADD "MJ3" SUFFIX TO THE PART NUMBER SHOWN, FOR EXAMPLE 3157-1-5 MJ3.
- ELECTRICAL CHARACTERISTICS:
NOMINAL IMPEDANCE: 50 OHMS.
FREQUENCY RANGE: DC TO 6 GHz.
OPERATING VOLTAGE: 2700 VRMS.

3157-1-5

REVISIONS

ISSUE	CHANGES
0	ER 38188 HVN 01/22/01
1	CN 38377 A HVN 08/14/01

3157-1-5S

SCALE 2:1

APPROX SURFACE AREA

USED ON

REF:

7-16, RECEP., F, PNL

DRAWN HVN DATE 03/21/01

DESIGN LI DATE 12/07/00

APPR. DATE

KINGS
ELECTRONICS CO., INC.
ROCK HILL, SOUTH CAROLINA 29730

3157-1-5

SD