



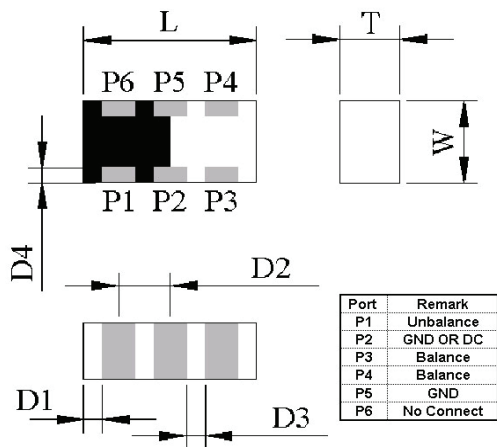
- 0603/0805 SMD Baluns
- Low Temperature Cofired
- Central frequency 2.45Ghz
- Low Insertion Loss
- High rejection at Lower Stop Band and 2nd Harmonic Band
- For ISM Band, WLAN and Bluetooth Applications



Electrical Characteristics

Part Number	Pass Band (GHz)	Impedance		VSWR	IL (dB)	Ripple (dB)	Difference	
		Unbalance ( $\Omega$ )	Balance ( $\Omega$ )				Amplitude (dB)	Phase (Degree)
ABAL05-052425A1	2.4~2.5	50	50	2	1.2	0.6	2	180±10
ABAL05-102425A1	2.4~2.5	50	100	2	1.2	0.6	2	180±10
ABAL05-102425A2	2.4~2.5	50	100	2	1.2	0.6	2	180±10
ABAL10-052425A1	2.4~2.5	50	50	2	1.0	0.6	2	180±10
ABAL10-072425A1	2.4~2.5	50	70	2	1.0	0.6	2	180±10
ABAL10-102425A1	2.4~2.5	50	100	2	1.0	0.6	2	180±10
ABAL10-104959A1	4.9-5.9	50	100	2	1.1	0.6	2	180±10
ABAL10-202425A1	2.4~2.5	50	200	2	1.0	0.6	2	180±10

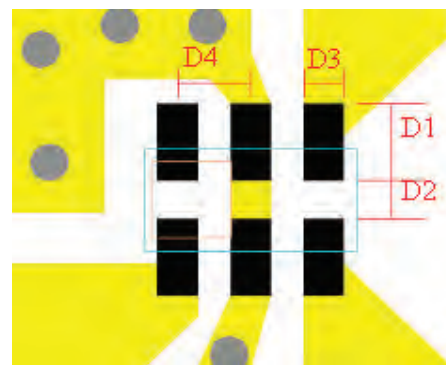
Shapes and Dimensions



Dimension in mm

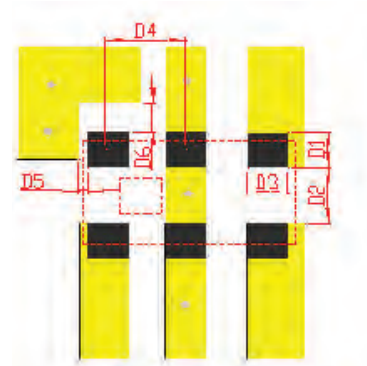
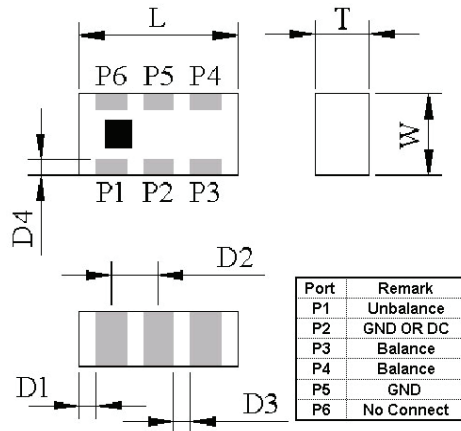
TYPE	L	W	T	P1-P6	D1	D2	D3	D4
ABAL05-052425A1	1.6±0.1	0.8±0.1	0.55±0.1	0.3±0.1	0.1±0.1	0.55±0.1	0.25±0.1	0.15±0.1
ABAL05-102425A1	1.6±0.1	0.8±0.1	0.55±0.1	0.3±0.1	0.1±0.1	0.55±0.1	0.25±0.1	0.15±0.1
ABAL05-102425A2	1.6±0.1	0.8±0.1	0.55±0.1	0.3±0.1	0.1±0.1	0.55±0.1	0.25±0.1	0.15±0.1

Recommended Pattern



Dimension in mm

TYPE	D1	D2	D3	D4
ABAL05-052425A1	0.6±0.1	0.3±0.1	0.3±0.1	0.55±0.1
ABAL05-102425A1	0.6±0.1	0.3±0.1	0.3±0.1	0.55±0.1
ABAL05-102425A2	0.6±0.1	0.3±0.1	0.3±0.1	0.55±0.1

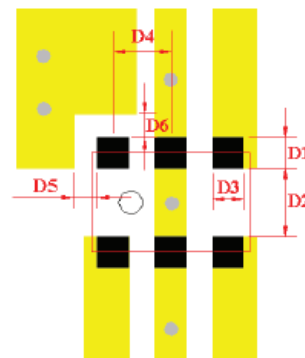
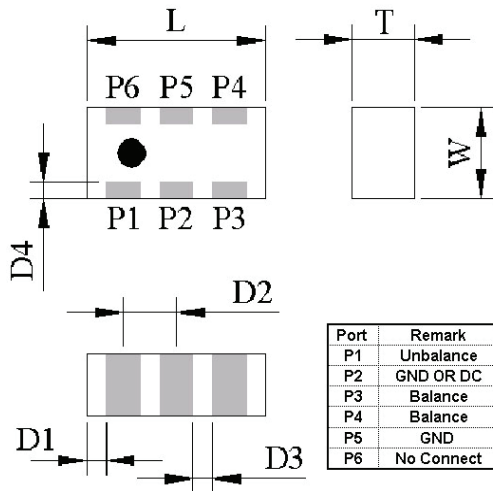


Dimension in mm

TYPE	L	W	T	P1~P6	D1	D2	D3	D4
ABAL10-052425A1	2.0±0.15	1.25±0.15	0.65±0.15	0.3±0.15	0.2±0.15	0.65±0.15	0.35±0.15	0.3±0.15
ABAL10-072425A1	2.0±0.15	1.25±0.15	0.65±0.15	0.3±0.15	0.2±0.15	0.65±0.15	0.35±0.15	0.3±0.15
ABAL10-202425A1	2.0±0.15	1.25±0.15	0.65±0.15	0.3±0.15	0.2±0.15	0.65±0.15	0.35±0.15	0.3±0.15

Dimension in mm

TYPE	D1	D2	D3	D4	D5	D6
ABAL10-052425A1	1.0±0.1	0.8±0.1	0.35±0.1	0.65±0.1	0.25±0.1	0.25±0.1
ABAL10-072425A1	1.0±0.1	0.8±0.1	0.35±0.1	0.65±0.1	0.25±0.1	0.25±0.1
ABAL10-202425A1	1.0±0.1	0.8±0.1	0.35±0.1	0.65±0.1	0.25±0.1	0.25±0.1



Dimension in mm

TYPE	L	W	T	P1~P6	D1	D2	D3	D4
ABAL10-102425A1	2.0±0.15	1.25±0.15	0.65±0.15	0.3±0.15	0.2±0.15	0.65±0.15	0.35±0.15	0.3±0.15
ABAL10-104959A1	2.0±0.15	1.25±0.15	0.60±0.15	0.3±0.15	0.2±0.15	0.65±0.15	0.35±0.15	0.3±0.15

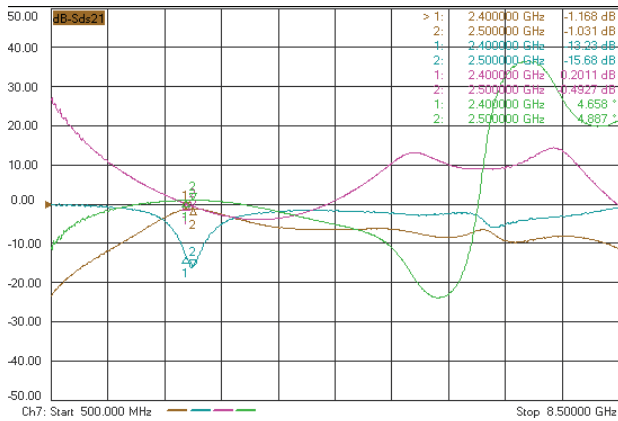
Dimension in mm

TYPE	D1	D2	D3	D4	D5	D6
ABAL10-102425A1	1.0±0.1	0.8±0.1	0.35±0.1	0.65±0.1	0.25±0.1	0.25±0.1
ABAL10-104959A1	1.0±0.1	0.8±0.1	0.35±0.1	0.65±0.1	0.25±0.1	0.25±0.1

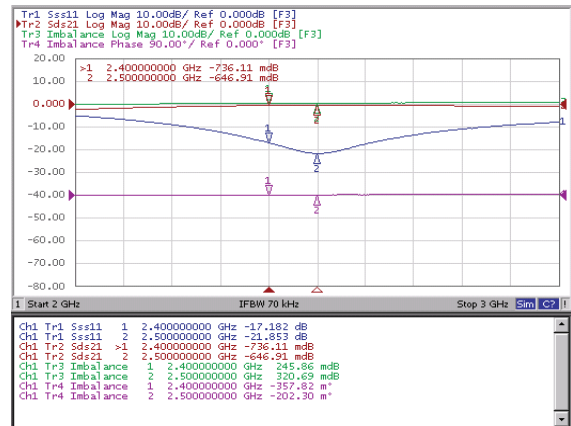


Test Instruments : Agilent E5071B/N5230A Vector Network Analyzer

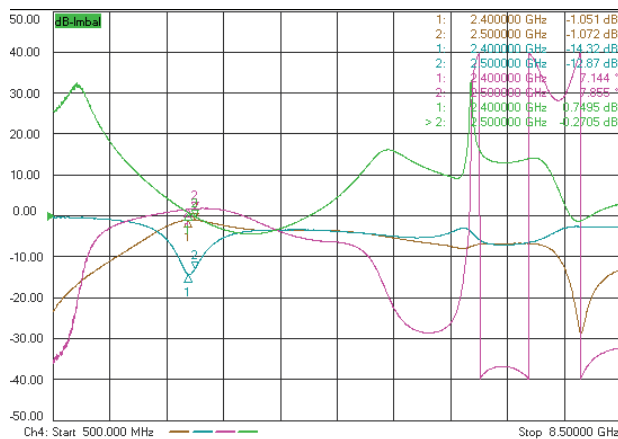
ABAL05-052425A1



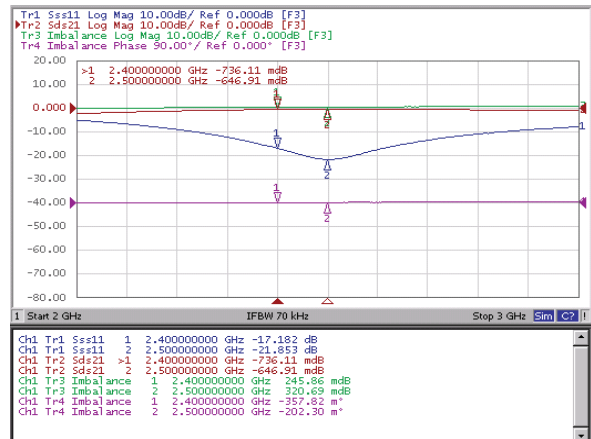
ABAL05-102425A1



ABAL05-102425A2

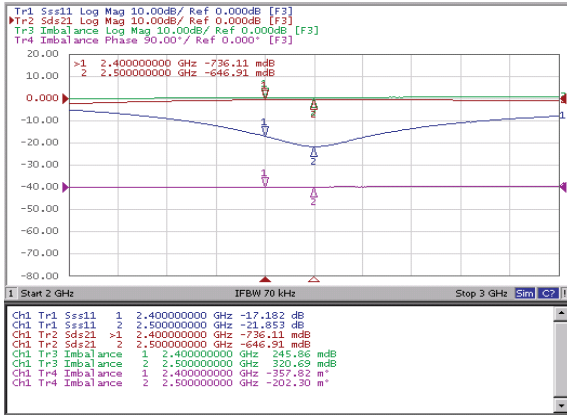


ABAL10-052425A1

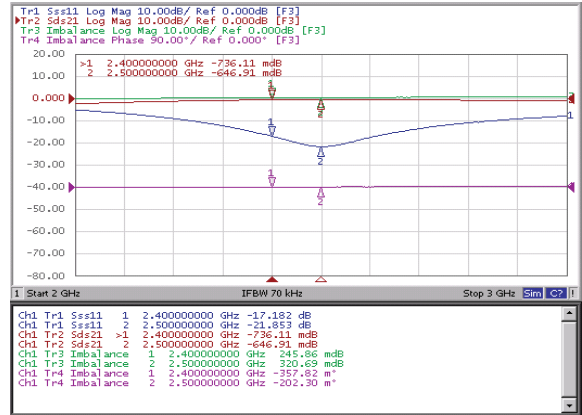




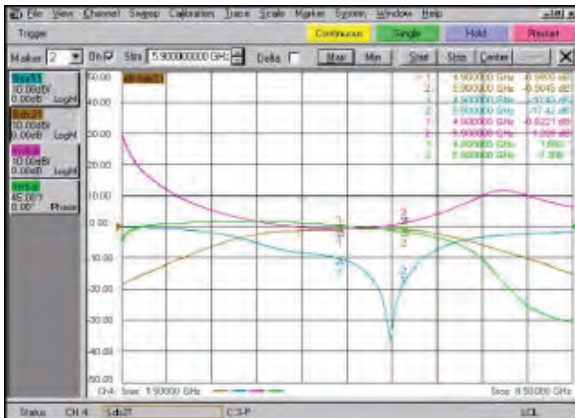
ABAL10-072425A1



ABAL10-102425A1



ABAL10-104959A1



ABAL10-202425A1

